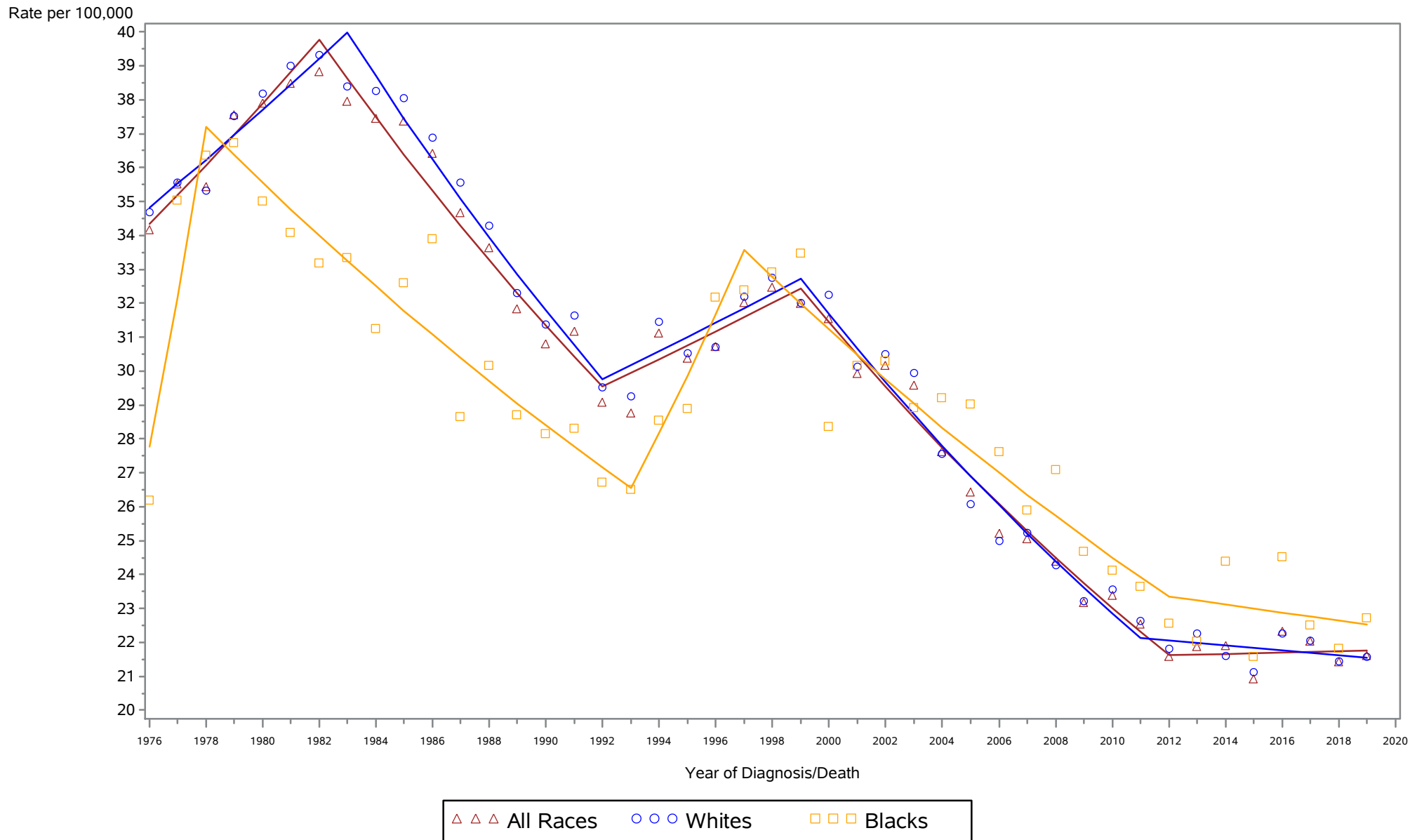


New York State Cancer Registry, NYSDOH
 Age-Adjusted Regional/Distant Stage Cancer Incidence Rates
 New York State by Race, 1976-2019

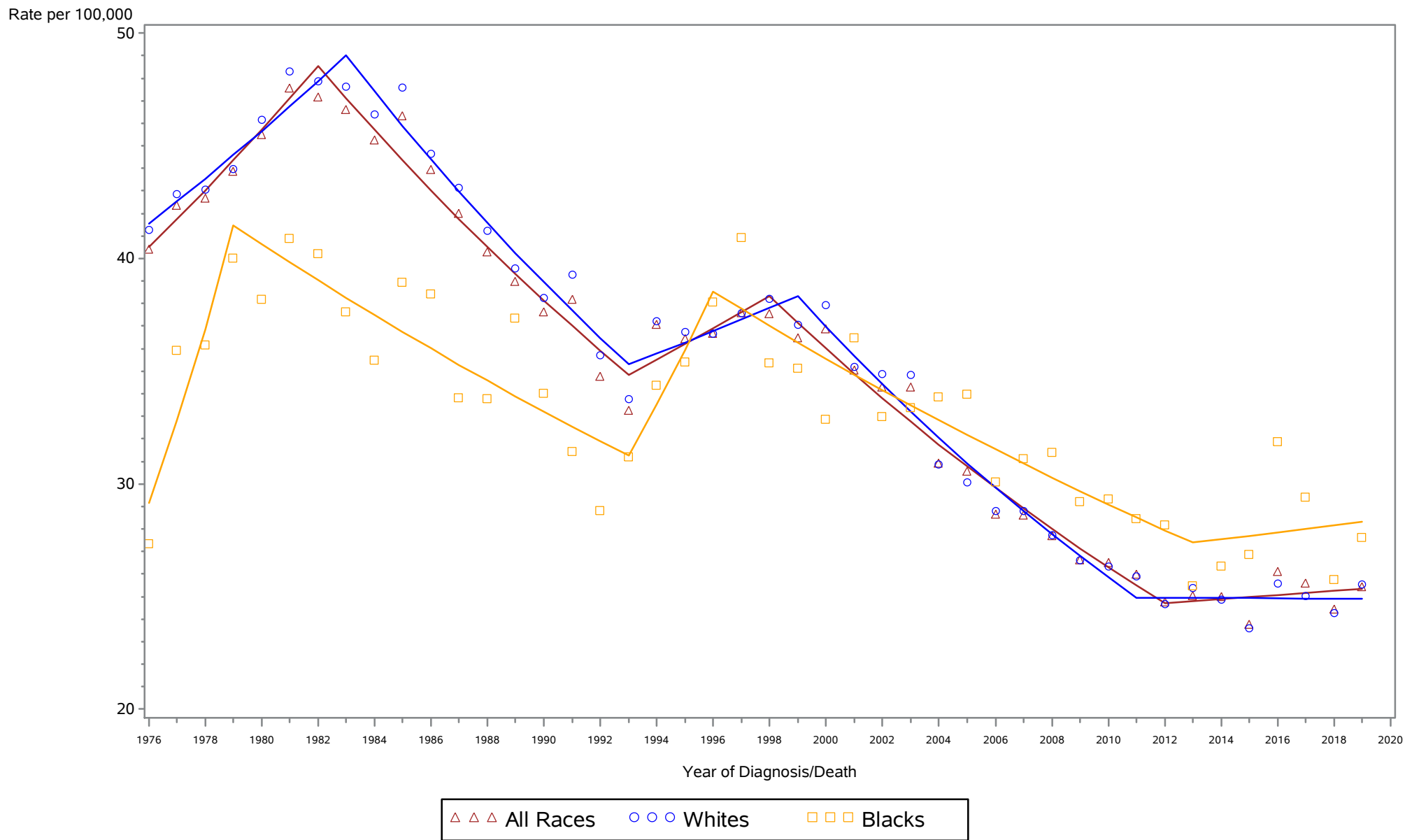
Colorectal, Males and Females



Rates are age-adjusted to the 2000 US population standard.
 Regression lines are calculated using the Joinpoint Regression Program Version 4.6.0.0, April 2018, National Cancer Institute (<http://srab.cancer.gov/joinpoint/>).
 The data shown here are not identical to the data in the corresponding 2015-2019 incidence table. See the rationale in 'Considerations When Comparing Cancer Statistics Over Time.'

New York State Cancer Registry, NYSDOH
Age-Adjusted Regional/Distant Stage Cancer Incidence Rates
New York State by Race, 1976-2019

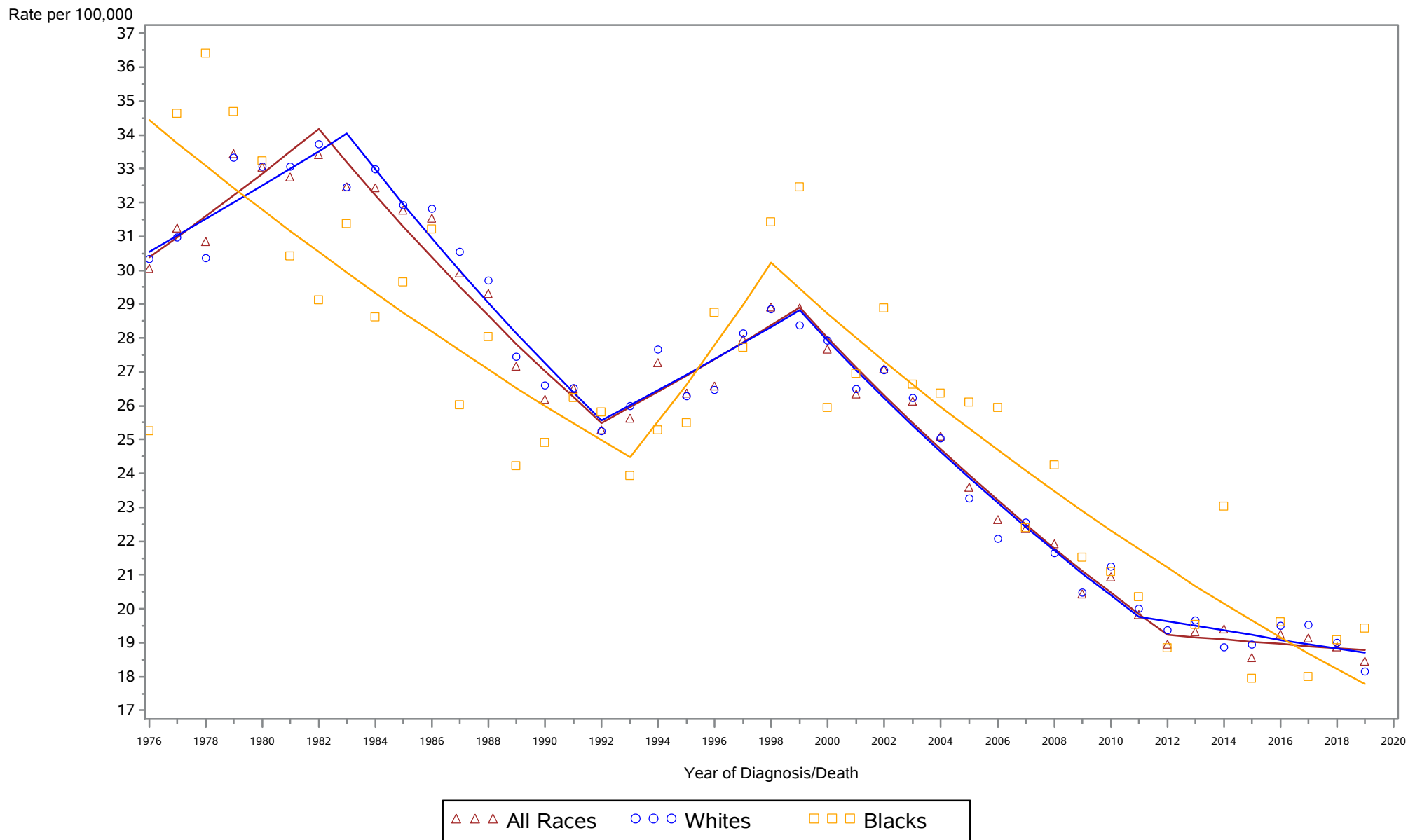
Colorectal, Males



Rates are age-adjusted to the 2000 US population standard.
Regression lines are calculated using the Joinpoint Regression Program Version 4.6.0.0, April 2018, National Cancer Institute (<http://srab.cancer.gov/joinpoint/>).
The data shown here are not identical to the data in the corresponding 2015-2019 incidence table. See the rationale in 'Considerations When Comparing Cancer Statistics Over Time.'

New York State Cancer Registry, NYSDOH
Age-Adjusted Regional/Distant Stage Cancer Incidence Rates
New York State by Race, 1976-2019

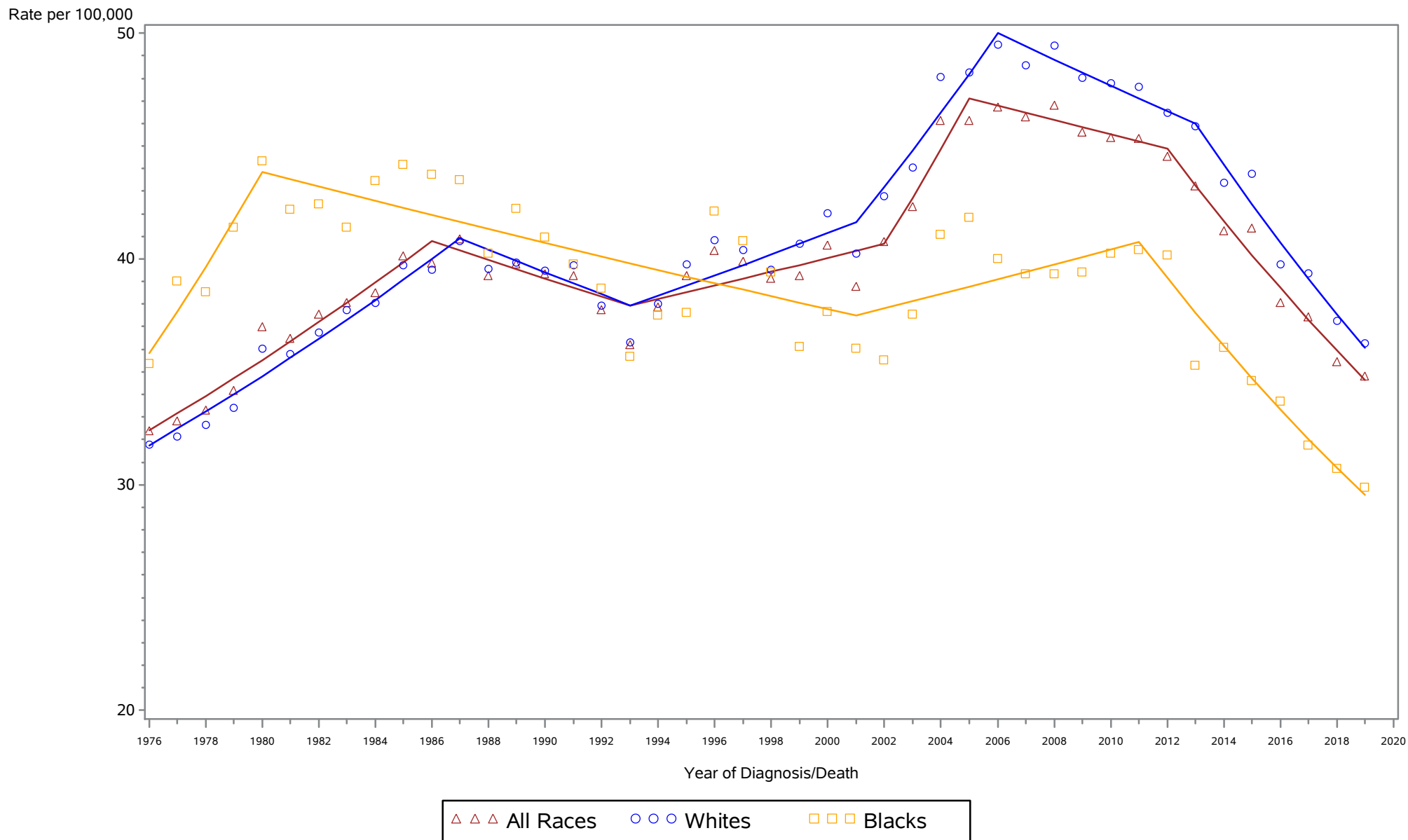
Colorectal, Females



Rates are age-adjusted to the 2000 US population standard.
Regression lines are calculated using the Joinpoint Regression Program Version 4.6.0.0, April 2018, National Cancer Institute (<http://srab.cancer.gov/joinpoint/>).
The data shown here are not identical to the data in the corresponding 2015-2019 incidence table. See the rationale in 'Considerations When Comparing Cancer Statistics Over Time.'

New York State Cancer Registry, NYSDOH
 Age-Adjusted Regional/Distant Stage Cancer Incidence Rates
 New York State by Race, 1976-2019

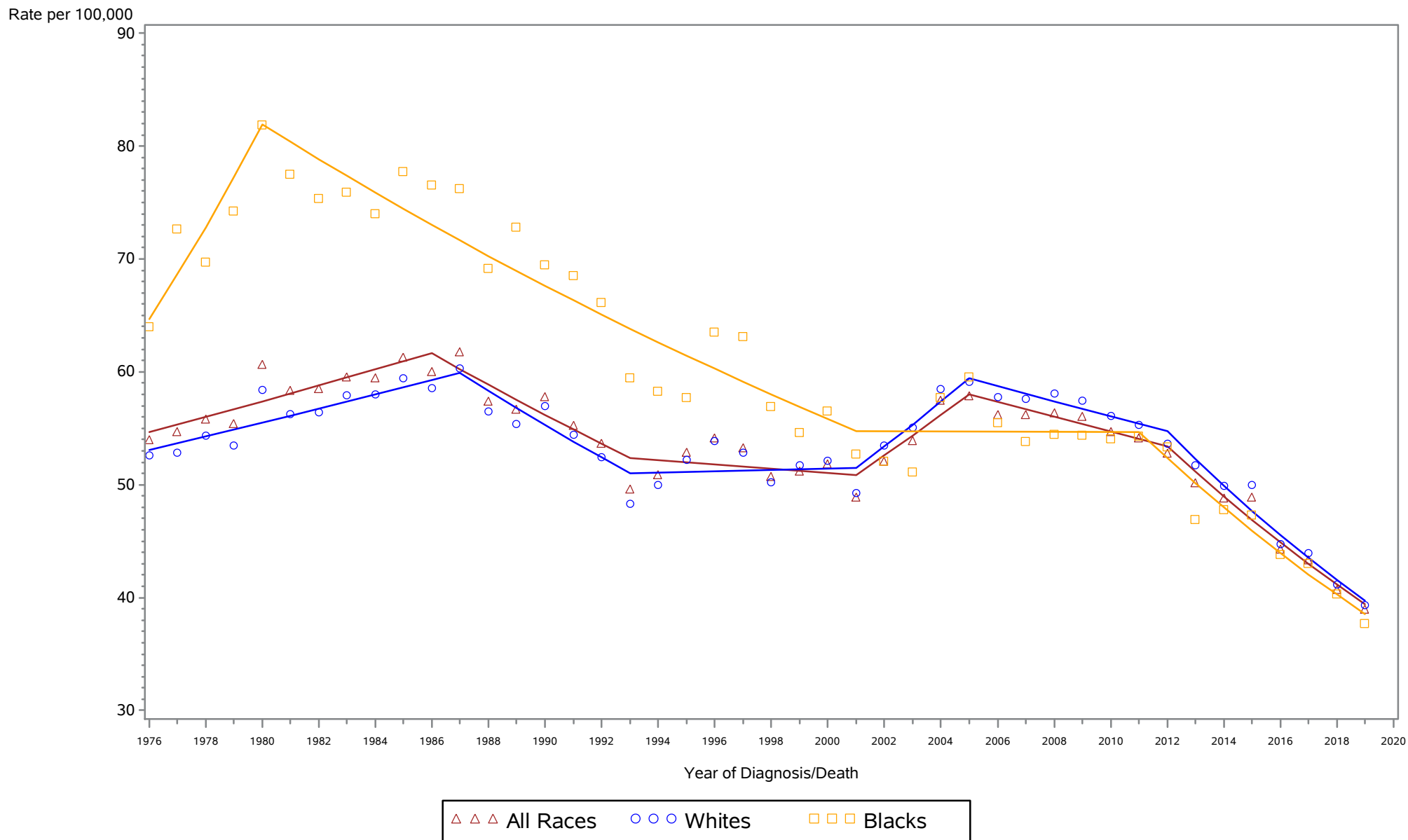
Lung and bronchus, Males and Females



Rates are age-adjusted to the 2000 US population standard.
 Regression lines are calculated using the Joinpoint Regression Program Version 4.6.0.0, April 2018, National Cancer Institute (<http://srab.cancer.gov/joinpoint/>).
 The data shown here are not identical to the data in the corresponding 2015-2019 incidence table. See the rationale in 'Considerations When Comparing Cancer Statistics Over Time.'

New York State Cancer Registry, NYSDOH
 Age-Adjusted Regional/Distant Stage Cancer Incidence Rates
 New York State by Race, 1976-2019

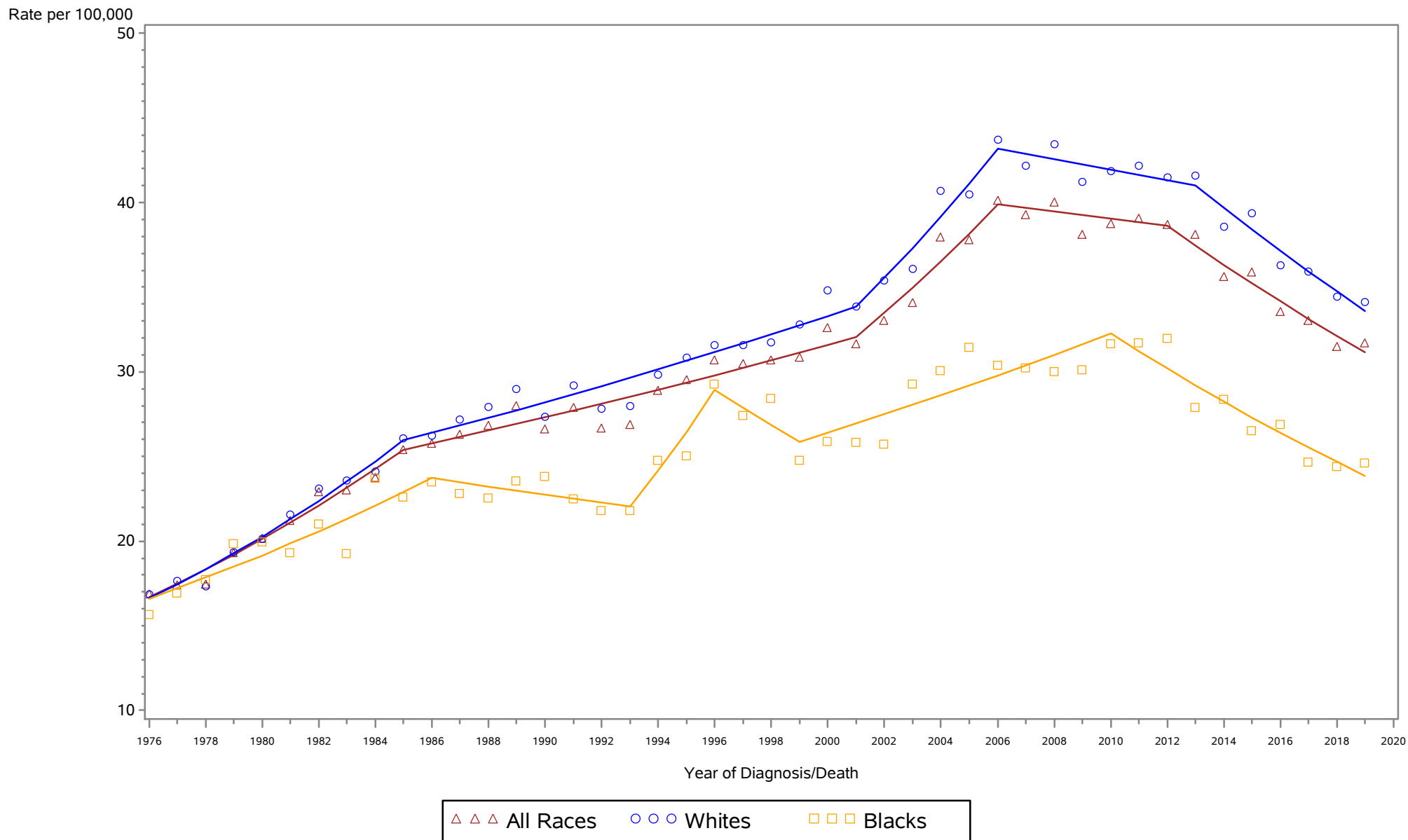
Lung and bronchus, Males



Rates are age-adjusted to the 2000 US population standard.
 Regression lines are calculated using the Joinpoint Regression Program Version 4.6.0.0, April 2018, National Cancer Institute (<http://srab.cancer.gov/joinpoint/>).
 The data shown here are not identical to the data in the corresponding 2015-2019 incidence table. See the rationale in 'Considerations When Comparing Cancer Statistics Over Time.'

New York State Cancer Registry, NYSDOH
Age-Adjusted Regional/Distant Stage Cancer Incidence Rates
New York State by Race, 1976-2019

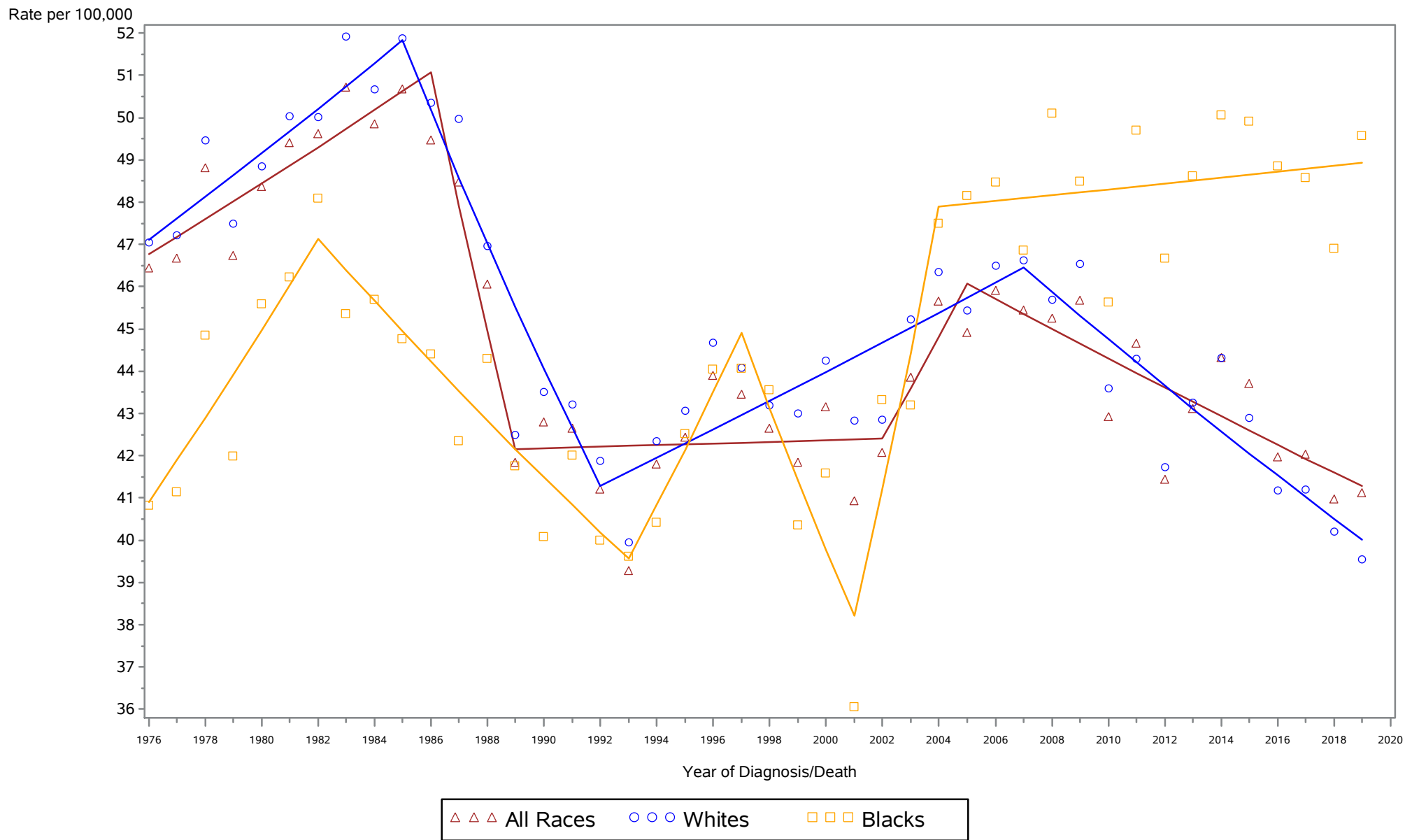
Lung and bronchus, Females



Rates are age-adjusted to the 2000 US population standard.
Regression lines are calculated using the Joinpoint Regression Program Version 4.6.0.0, April 2018, National Cancer Institute (<http://srab.cancer.gov/joinpoint/>).
The data shown here are not identical to the data in the corresponding 2015-2019 incidence table. See the rationale in 'Considerations When Comparing Cancer Statistics Over Time.'

New York State Cancer Registry, NYSDOH
 Age-Adjusted Regional/Distant Stage Cancer Incidence Rates
 New York State by Race, 1976-2019

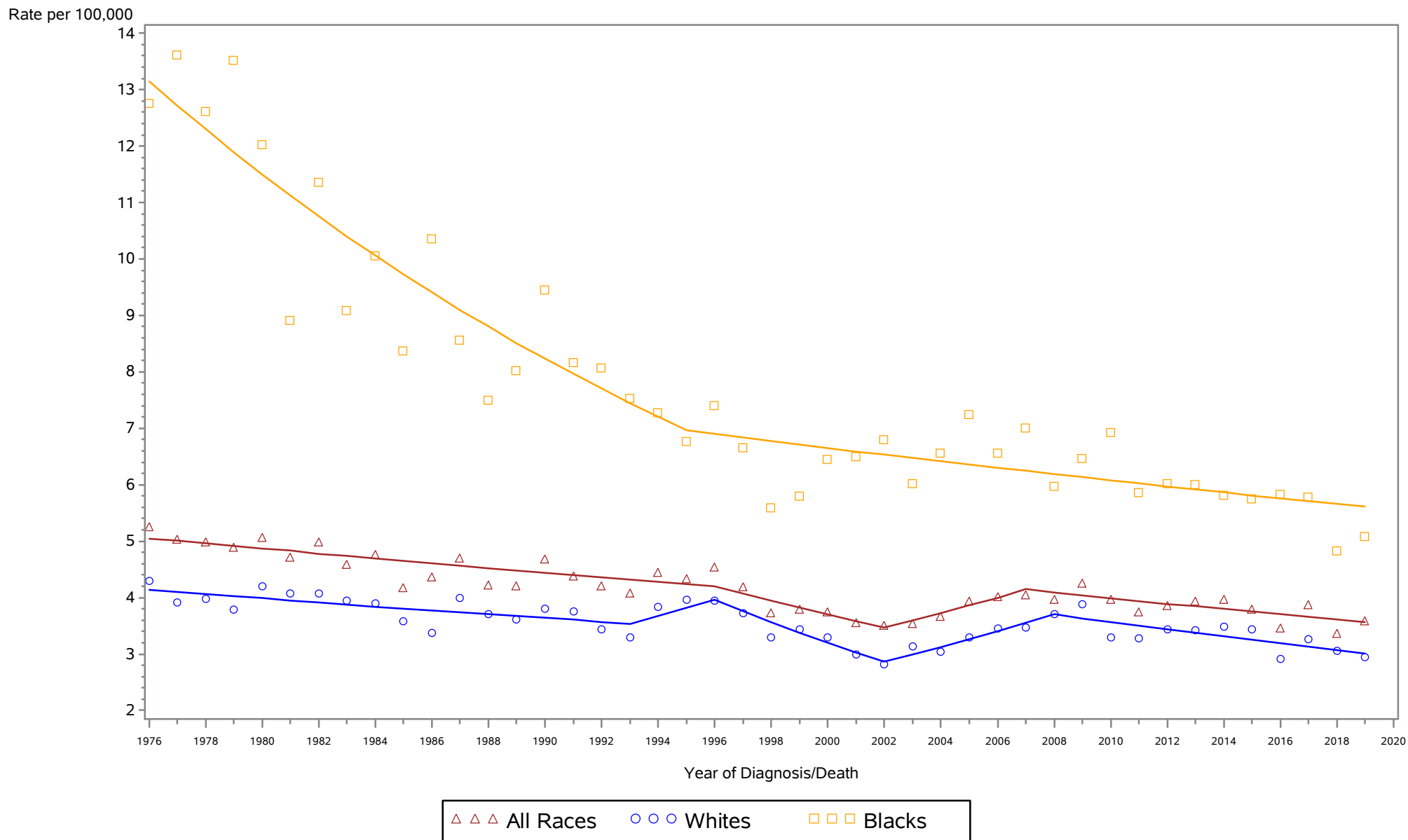
Female breast



Rates are age-adjusted to the 2000 US population standard.
 Regression lines are calculated using the Joinpoint Regression Program Version 4.6.0.0, April 2018, National Cancer Institute (<http://srab.cancer.gov/joinpoint/>).
 The data shown here are not identical to the data in the corresponding 2015-2019 incidence table. See the rationale in 'Considerations When Comparing Cancer Statistics Over Time.'

New York State Cancer Registry, NYSDOH
Age-Adjusted Regional/Distant Stage Cancer Incidence Rates
New York State by Race, 1976-2019

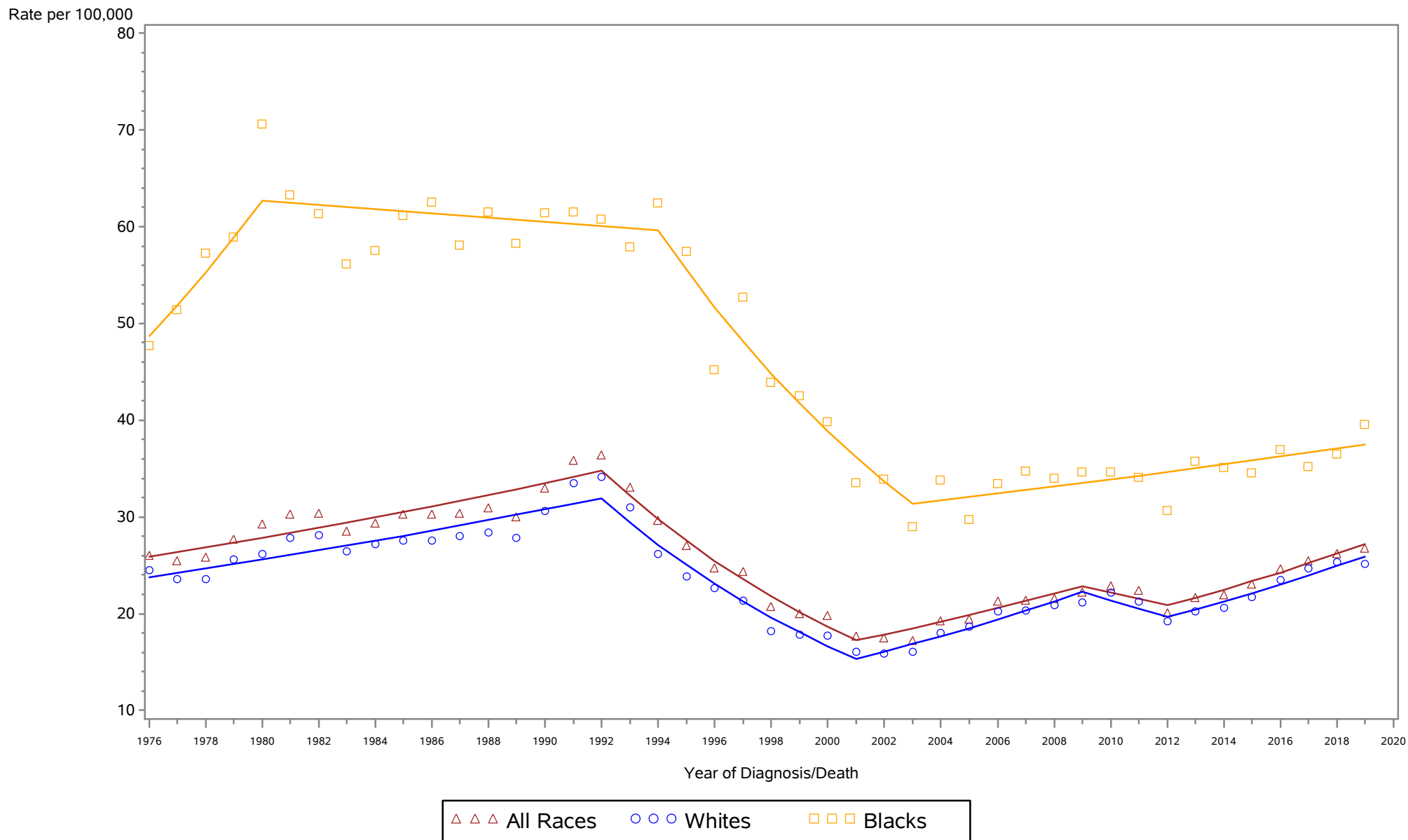
Cervix uteri



Rates are age-adjusted to the 2000 US population standard.
Regression lines are calculated using the Joinpoint Regression Program Version 4.6.0.0, April 2018, National Cancer Institute (<http://srab.cancer.gov/joinpoint/>).
The data shown here are not identical to the data in the corresponding 2015-2019 incidence table. See the rationale in 'Considerations When Comparing Cancer Statistics Over Time.'

New York State Cancer Registry, NYSDOH
 Age-Adjusted Regional/Distant Stage Cancer Incidence Rates
 New York State by Race, 1976-2019

Prostate



Rates are age-adjusted to the 2000 US population standard.
 Regression lines are calculated using the Joinpoint Regression Program Version 4.6.0.0, April 2018, National Cancer Institute (<http://srab.cancer.gov/joinpoint/>).
 The data shown here are not identical to the data in the corresponding 2015-2019 incidence table. See the rationale in 'Considerations When Comparing Cancer Statistics Over Time.'