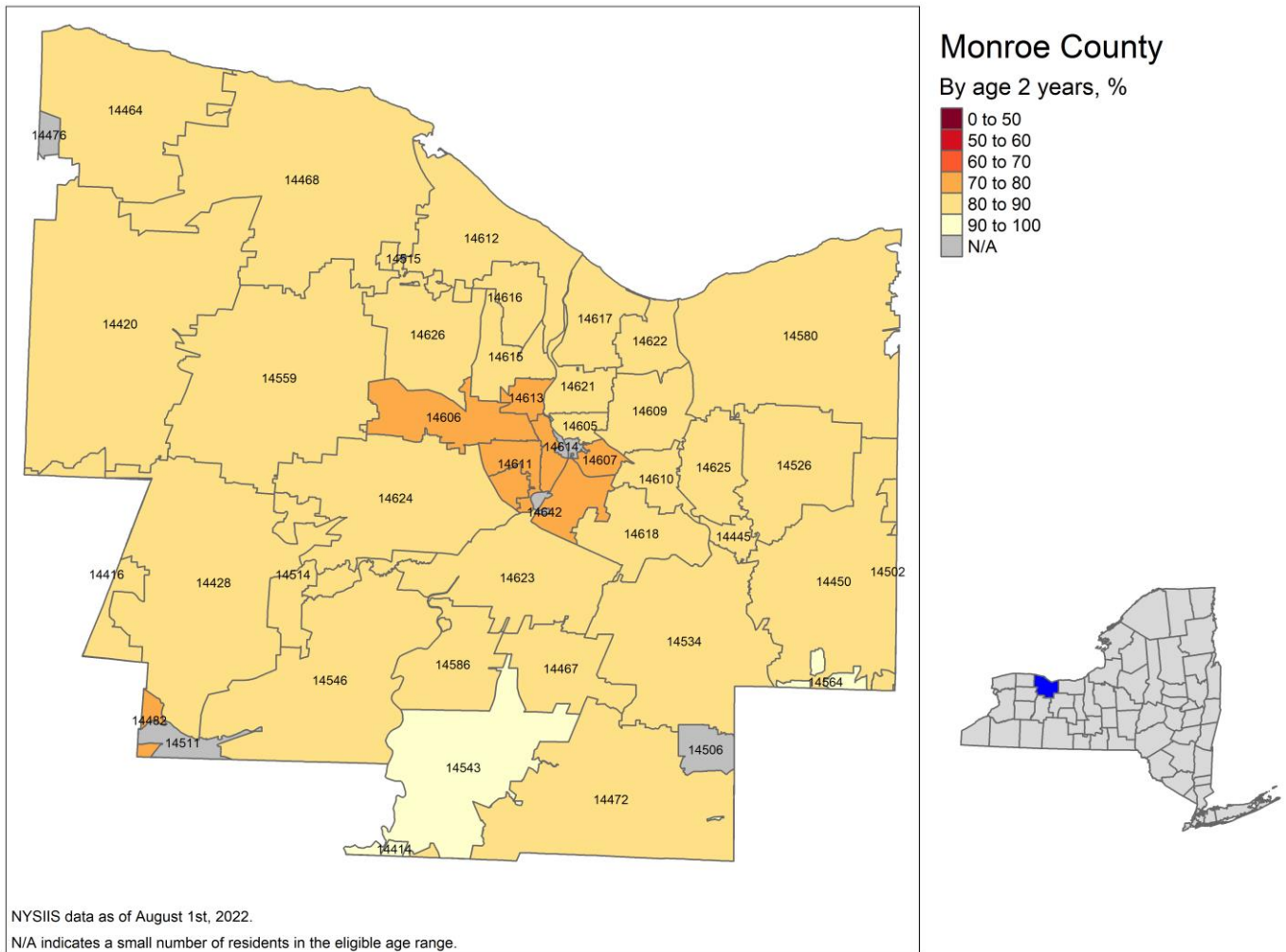


## Polio Vaccination Rates by Zip Code: Monroe County

This report is based on data as of August 1, 2022 from the New York State Immunization Information System (NYSIIS). The rates below are calculated based on data of children that have received 3 polio immunizations by 2 years of age, reported their residency as the State of New York, provided their New York State county of residence, and have at least one immunization or have a New York State birth record outside of New York City.

- As of January 8, 2008, all health care providers in New York State, outside of New York City, are required to report all immunizations administered to people less than 19 years of age, along with the person's immunization histories, to NYSDOH using NYSIIS.
- Calculated rates are based on where the individual resides, based on the most recent resident information reported through NYSIIS.
- ZIP codes that straddle more than one county are designated to a single county based on the [open data page here](#) and in consultation with local county health departments, in which the entire ZIP code is included in the rate.
- Data is not included for ZIP codes where there are less than 20 residents in the eligible age range.
- Some entities that are not under the regulatory authority of the State of New York (e.g., federal entities such as federal military reservations, first nations, and jurisdictions outside of New York State), may not report this data to New York State, and would therefore not have their data included in NYSDOH rates.
- The New York City Department of Health and Mental Hygiene (NYCDOHMH) maintains non-COVID-19 immunization records for New York City residents through the Citywide Immunization Registry (CIR).

**Figure 1: Monroe County Polio Vaccination Rates by Zip Code**



\*Some ZIP codes' labels may be in a different place than they would appear on a geographic map or not be visible due to formatting limitations with the software used to generate the NYSDOH polio vaccination rate ZIP code map. If you do not see a ZIP code label on the map, please refer to Table 1 for the corresponding polio vaccination rate for each ZIP code available or the data description for more information about the data source.

**Table 1: Monroe County Polio Vaccination Rates by Zip Code**

ZIP Code	Polio Vaccination Rate
14414	90.9%
14416	88.6%
14420	80.8%
14428	86.2%
14445	87.6%
14450	88.3%
14464	83.3%
14467	88.1%
14468	87.9%
14472	89.9%
14482	79.8%
14502	84.6%
14514	83.1%
14526	89.8%
14534	88.6%
14543	92.0%
14546	88.1%
14559	87.6%
14564	92.4%
14580	87.3%
14586	88.8%
14605	81.1%
14606	73.6%
14607	74.5%
14608	75.3%
14609	81.8%
14610	85.2%
14611	79.3%
14612	86.2%
14613	73.5%
14615	83.6%
14616	85.2%
14617	84.1%
14618	85.3%
14619	79.2%
14620	74.2%
14621	81.1%
14622	88.6%
14623	84.5%
14624	85.8%



ZIP Code	Polio Vaccination Rate
14625	85.4%
14626	83.2%
14476	*
14506	*
14511	*
14515	*
14604	*
14614	*
14627	*
14642	*

\*Not shown, due to a small number (<20) of residents in the eligible age range.