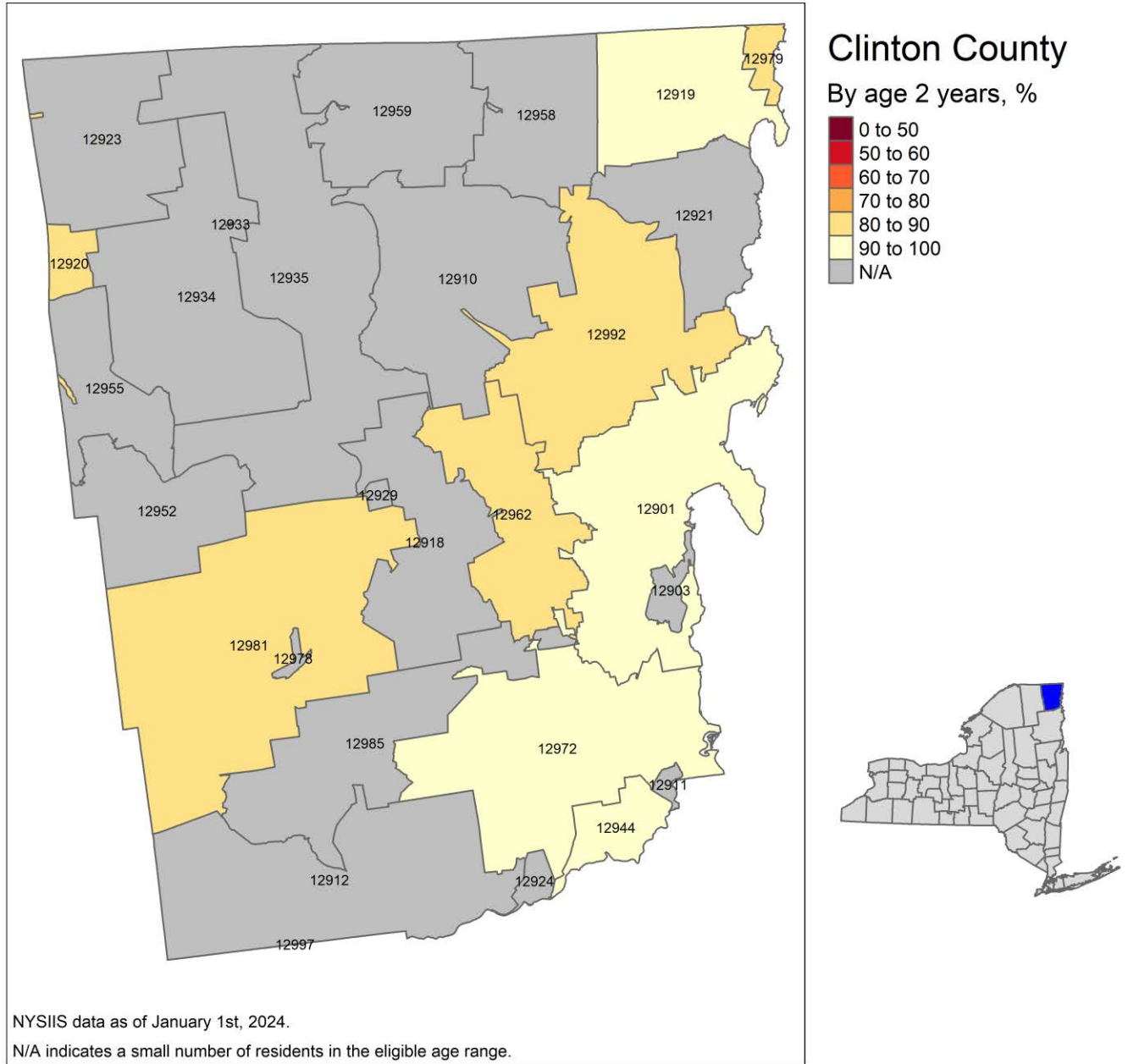


MMR Vaccination Rates by ZIP Code: Clinton County

This report is based on data as of January 1, 2024 from the New York State Immunization Information System (NYSIIS). The rates below are calculated based on data of children ages 24-35 months that received 1 MMR immunization before their second birthday, reported their residency as the State of New York, provided their New York State county of residence, and have at least one immunization or have a New York State birth record outside of New York City.

- As of January 8, 2008, all health care providers in New York State, outside of New York City, are required to report all immunizations administered to people less than 19 years of age, along with the person's immunization histories, to NYSDOH using NYSIIS.
- Calculated rates are based on where the individual resides, based on the most recent resident information reported through NYSIIS.
- ZIP codes that straddle more than one county are included in each county's map and table based on the [open data page here](#) and in consultation with local county health departments. The rate for the entire ZIP code is shown. The county overall rate includes only those children who report the given county of residence. This can lead to some discrepancies between the ZIP code rates and the county rates in the table below.
- Data are not included for ZIP codes where there are less than 20 residents in the eligible age range.
- Some entities that are not under the regulatory authority of the State of New York (e.g., federal entities such as federal military facilities, first nations, and jurisdictions outside of New York State), may not report this data to New York State, and would therefore not have their data included in NYSDOH rates.
- The New York City Department of Health and Mental Hygiene (NYCDOHMH) maintains non-COVID-19 immunization records for New York City residents through the Citywide Immunization Registry (CIR).

Figure 1: Clinton County MMR Vaccination Rates by ZIP Code



*Some ZIP codes' labels may be in a different place than they would appear on a geographic map or not be visible due to formatting limitations with the software used to generate the NYSDOH MMR vaccination rate ZIP code map. If you do not see a ZIP code label on the map, please refer to Table 1 for the corresponding MMR vaccination rate for each ZIP code available or the data description for more information about the data source.

Table 1: Clinton County MMR Vaccination Rates by ZIP Code

ZIP Code	MMR Vaccination Rate
Clinton County overall rate	90.2%
12901	90.8%
12919	96.0%
12920	88.9%
12944	92.1%
12962	89.1%
12972	90.0%
12979	85.7%
12981	85.7%
12992	80.6%
12903	*
12910	*
12911	*
12912	*
12918	*
12921	*
12923	*
12924	*
12929	*
12933	*
12934	*
12935	*
12952	*
12955	*
12958	*
12959	*
12978	*
12985	*
12997	*

*Not shown, due to a small number (<20) of residents in the eligible age range.