



**Department
of Health**

HIV Infection in New York State

HIV Care Outcomes Among Women

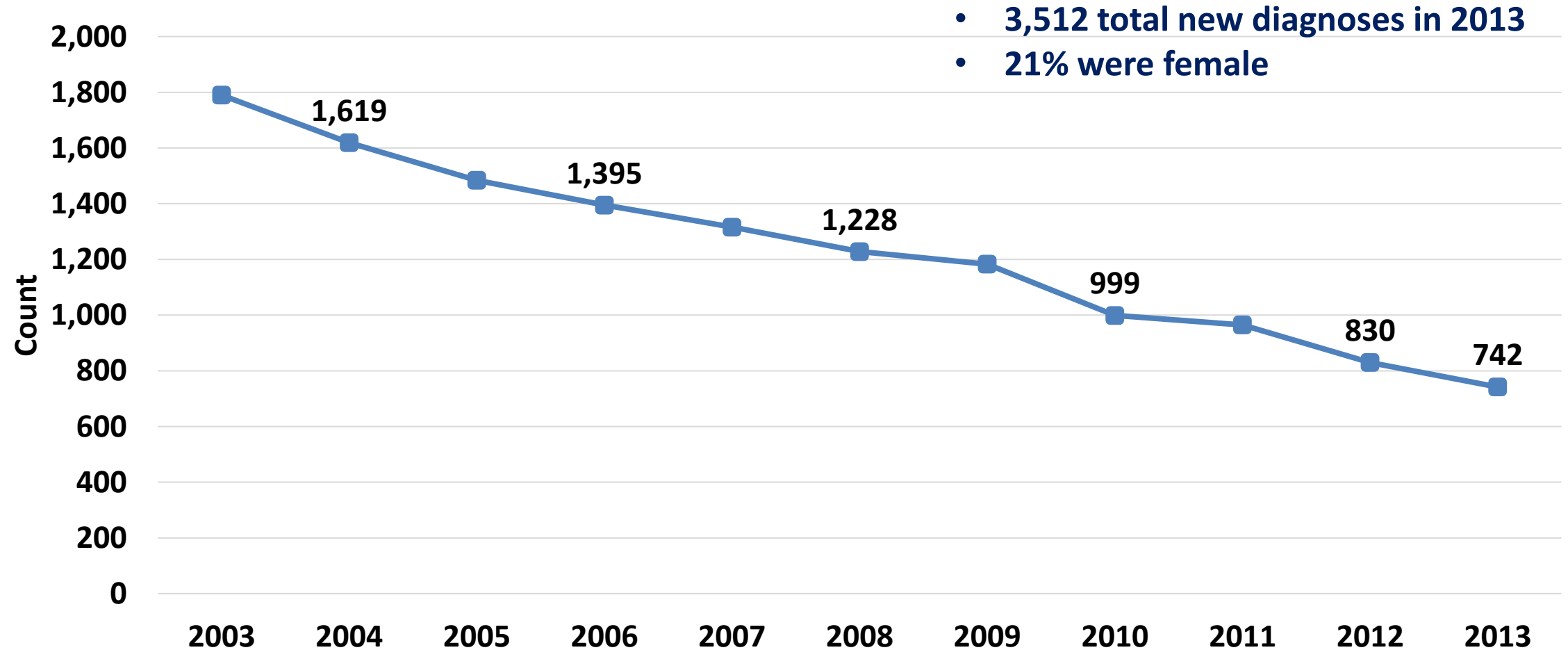
November, 2015

**Carol-Ann Swain
Bureau of HIV/AIDS Epidemiology
AIDS Institute**

Presentation Outline

- Epidemiology of HIV infection among females in New York State
- HIV care outcomes
 - Continuity of HIV care and HIV viral suppression
- Summary

Newly Diagnosed HIV Cases Among Females by Year of HIV Diagnosis New York State, 2003-2013



Living Cases of HIV/AIDS: Females Residing in NYS at the End of 2013

- There were 112,462 persons were living with *diagnosed* HIV infection (PLWDHI)
 - 30% (n=33,185) were female

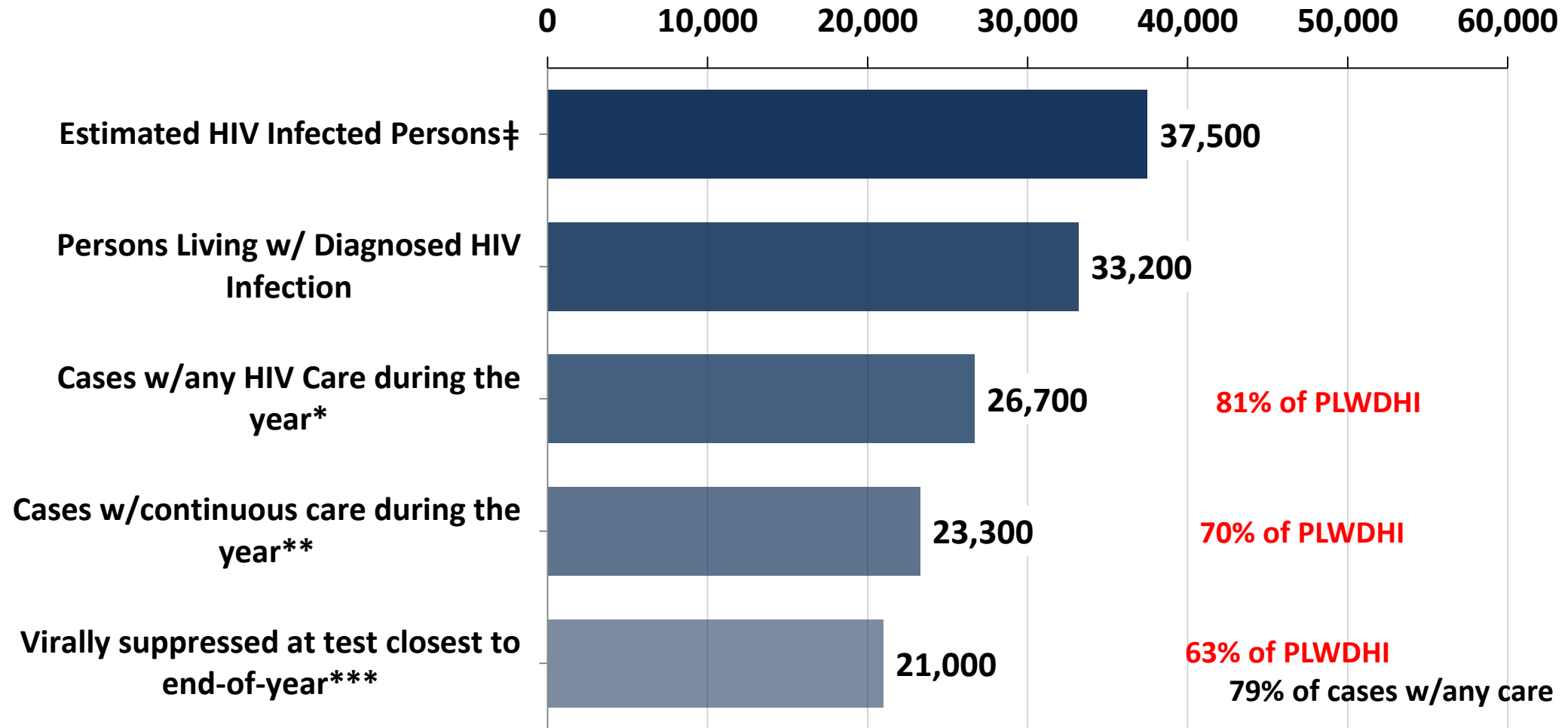
Females

- Race/ethnicity
 - 54% Black; 31% Hispanic; 10% White
- Age
 - 31% <30 years
 - 35% 30-39 years
 - 23% 40-49 years
 - 11% 50+ years
- HIV transmission risk
 - 80% heterosexual contact
 - 17% injection drug use
- Residence at the end of 2013
 - 78% resided in NYC; 22% in areas outside of NYC

HIV Care Outcomes

Cascade of HIV Care Among Females

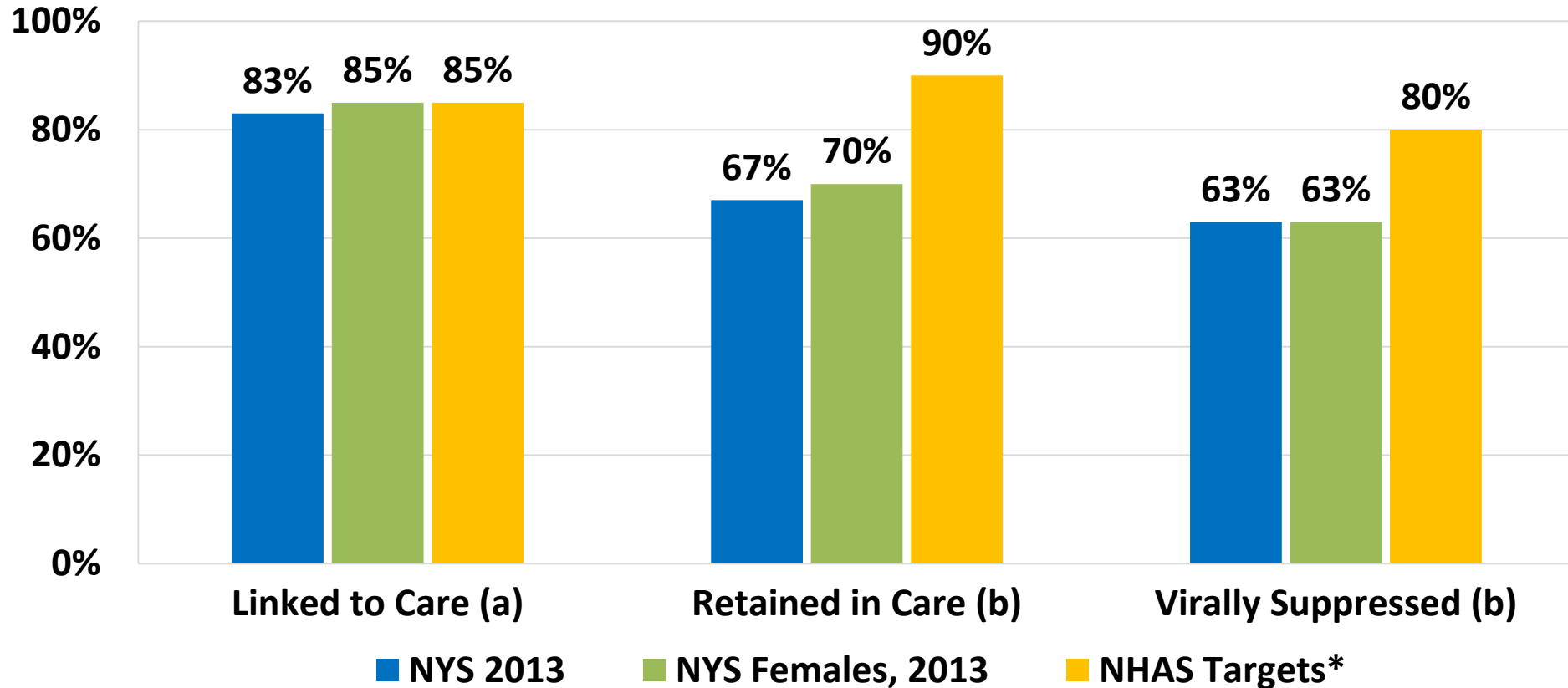
Persons Residing in NYS† at End of 2013



‡ 11.4% are infected and unaware, based on CDC estimate; * Any VL or CD4 test during the year; ** At least 2 tests, at least 3 months apart; *** Non-detectable viral load or viral load ≤200/ml

New York State HIV Care Measures and NHAS Targets, Females

Newly Diagnosed (a), PLWDHI (b)

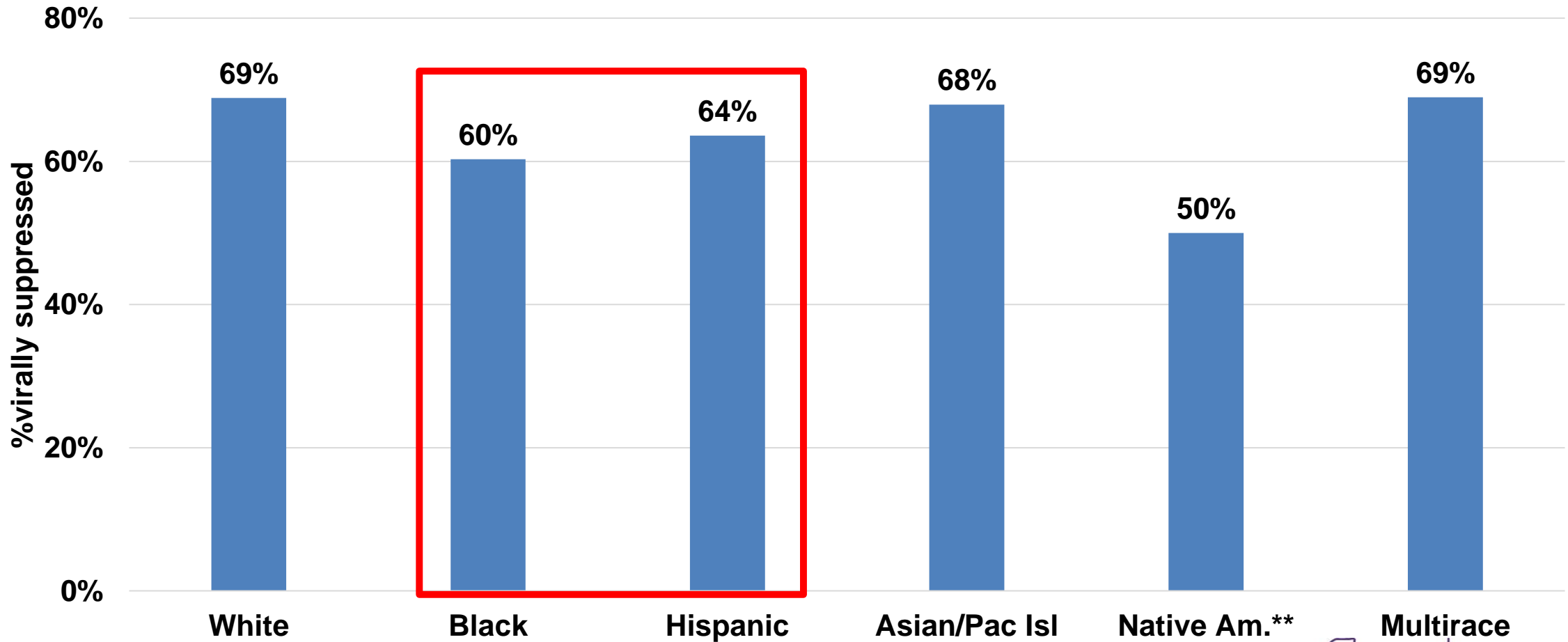


*The NHAS linkage to care proportion is based on the 2015 target; retention in care and HIV viral suppression are the updated 2020 targets.

Linkage to care within 90 days; Retained in care- ≥ 2 visits/year, ≥ 3 months apart; Virally Suppressed- viral load ≤ 200 copies/ml or non-detectable.



Females: Viral Suppression by Race/Ethnicity*, NYS 2013

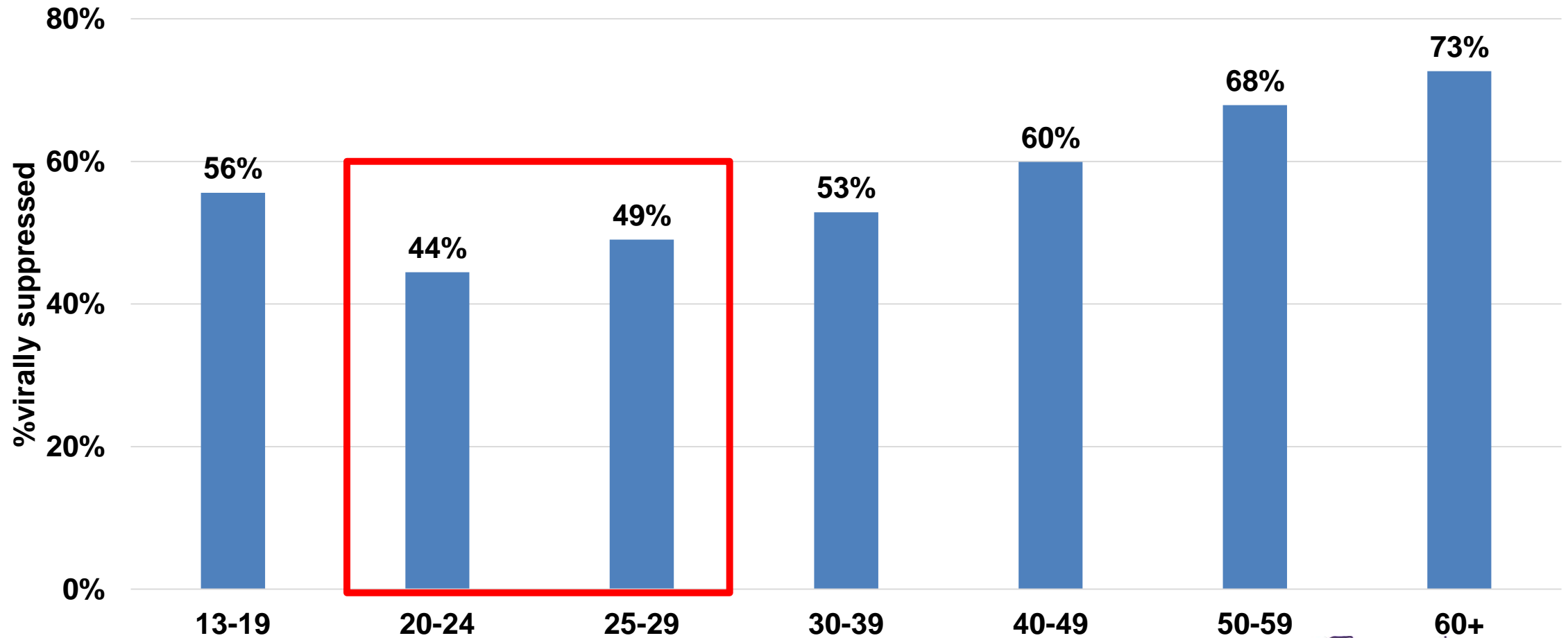


**Based on most recent address, regardless of where diagnosed. Excludes persons with AIDS with no evidence of care for 5 years and persons with diagnosed HIV (non-AIDS) with no evidence of care for 8 years.*

***16 women were Native Am.*



Females: Viral Suppression by Age*, NYS 2013



**Based on most recent address, regardless of where diagnosed. Excludes persons with AIDS with no evidence of care for 5 years and persons with diagnosed HIV (non-AIDS) with no evidence of care for 8 years.*



Data Summary

- New diagnoses among women declined by almost 60% in the decade prior to 2013

HIV care outcomes

- Linkage within 3 months of diagnosis meets the 2015 NHAS target
- Retention in care and HIV viral suppression are below the 2020 NHAS targets

HIV viral suppression

- Minorities represent the largest proportion of HIV-infected women but a lower proportion are suppressed compared to white women
- Relatively low among women aged 20-29 years

Thank you.

Carol-Ann Swain

carolann.swain@health.ny.gov

518-474-4284

For more data on HIV in New York State, please visit
<http://www.health.ny.gov/diseases/aids/statistics/>

Data requests to:

BHAE@health.ny.gov

****Thank you to the staff of BHAE for their efforts in assuring the quality and completeness of the
NYS HIV Surveillance Registry****