



Department  
of Health

# Training, Technical Assistance, and State Systemic Improvement Plan Initiatives

Jessica Simmons  
Bureau of Early Intervention



# Training

# Statewide Training – Measurement Incorporated

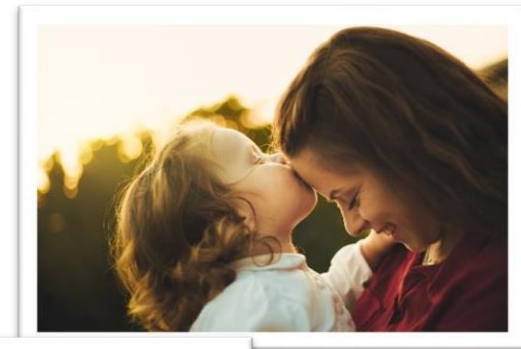
- Training Contract - awarded
- Talent Learning Management System
- Continuing Education Units will be issued through the International Accreditors for Continuing Education and Training
- Two new courses will be developed this year
- Quarterly online live delivery of the Introduction to Service Coordination and Evaluation, Assessment, & Eligibility Determinations courses (summer 2024)
- Annual training Needs Assessment
- New deliverable – communications/outreach



# Family Initiatives

# Partners Training

- Partners Training – leadership and advocacy skills training for parents
- Upcoming training session will be held in the Downstate Region
- Request For Proposals issued
- New deliverables – information sessions, listening sessions/focus groups, additional Partners training session each year (total of 5 training sessions – in all regions of New York State)



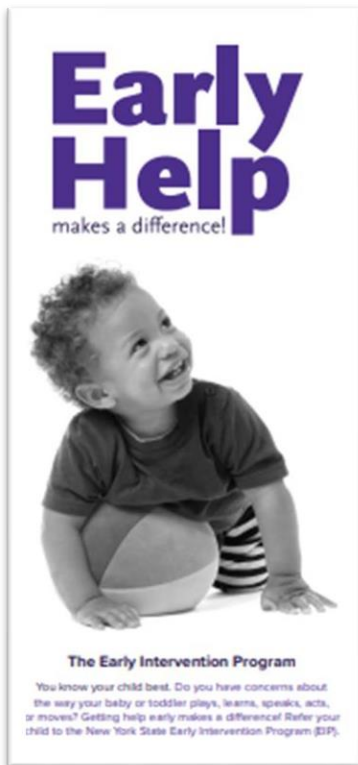
# Technical Assistance

# Technical Assistance

- Early Intervention Specialists respond to an average of 75 requests for technical assistance (phone/email) each week
- Recently issued guidance documents/Program materials
  - Tool Kits for Service Coordinators
    - Transition
    - Insurance
  - Early Help Makes a Difference Brochure (for parents)



# Early Help Makes a Difference Brochure



- Updated language to help parents track their child's developmental milestones and be prepared to discuss any concerns with their child's health care provider
- Added milestones specific to Social-Emotional development
- Added developmental milestones for 2, 4, 9, 15, and 30-months
- Will be available in 29 languages





# Early Help Makes a Difference Webpage



## What Help is Available?

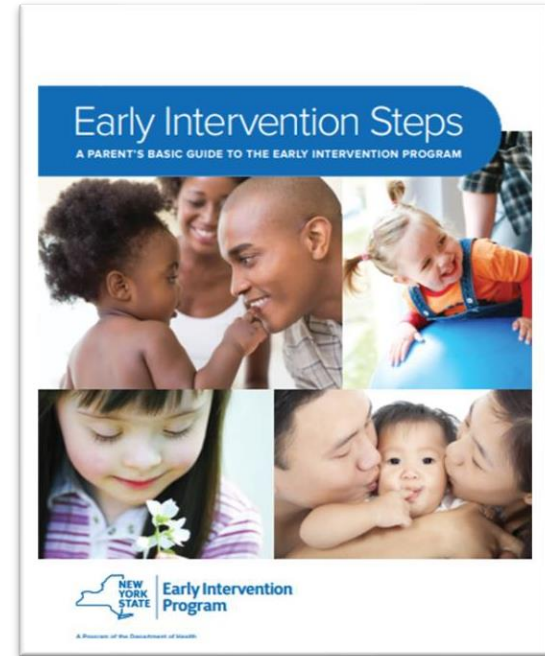
The New York State Early Intervention Program provides services to eligible babies and toddlers under 3 years of age who are not developing like other children. You can refer your child for an evaluation. If your child qualifies for services, your local program will help you get them. There is no cost to families. Services may include:

- Speech-language, physical, and occupational therapies
- Special instruction
- Audiology (hearing) and vision services
- Family support (social work, groups, training)

# Revised Program Guidance/Publications

Under development/revision:

- Transition guidance for families in collaboration with the State Education Department
- Early Intervention Steps: A Parent's Basic Guide to the Early Intervention Program
- Group Services
- Assistive Technology
- Initial/Ongoing Service Coordination Billing



# State Systemic Improvement Plan Overview

# State Systemic Improvement Plan

- Required by the U.S. Department of Education, Office of Special Education Programs
- Improve results for infants and toddlers with disabilities and their families
- Focus on family outcomes
  - Family-directed Assessments
  - Family Outcomes Survey



U.S. Department of Education



# State Systemic Improvement Plan Advisory Group



- Provide advice and stakeholder feedback on the plan, progress, and implementation of the State Systemic Improvement Plan
- Review ongoing data
- Review Department developed materials and provide feedback
- Support the Department in our efforts to improve family outcomes

# Early Intervention Community of Families Facebook Group and EI Families Listserv



- Are you interested in upcoming trainings for parents and caregivers?
- Are you looking for resources on developmental delays and disabilities?
- Do you want to share your ideas with the State Early Intervention Program?
- Do you want to learn about new State guidance and policies?

**If you answered YES, sign up for the New York State Early Intervention Program Families Listserv (NYS EIP Families Listserv)**

1. Send an e-mail to [listserv@listserv.health.state.ny.us](mailto:listserv@listserv.health.state.ny.us) - write "Subscribe" in the subject line.
2. In the body of the e-mail, write "Subscribe NYS\_EIP\_Families-L", then your first name and last name
3. Remove any e-mail signatures, then click send
4. You will receive a Listserv confirmation e-mail. Click the link in this e-mail to confirm your subscription. If you do not see this confirmation e-mail in your inbox, please check your spam/junk folder for the e-mail.
5. If you have any trouble subscribing, please e-mail [BEI.SSIP@health.ny.gov](mailto:BEI.SSIP@health.ny.gov)



Department  
of Health

Bureau of  
Early Intervention

[www.facebook.com/groups/NYSDOHEI](http://www.facebook.com/groups/NYSDOHEI)



Department  
of Health

# Early Intervention Videos

Videos for families:

1. Welcome to the Early Intervention Program
2. Family Outcomes Survey
3. Transition \*
4. Family-directed Assessment \*



\* under development

# Communities of Practice



# Communities of Practice

- Family Outcomes Data Community of Practice
- Part C Racial Equity Learning Community
- Child Outcomes Community of Practice



# Elevating Family Voices – State Story: New York

- The Early Childhood Technical Assistance (ECTA) Center and the Center for IDEA Early Childhood Data Systems (DaSy) supports state innovations for equitable family input
- Collaborated to help the New York State Early Intervention Program improve the quality and representativeness of their family data and use the data to advance equity
- New York State's work is featured on the Early Childhood Technical Assistance Center website.



# Family Outcomes Survey and Brochure

**¿Qué sucede con la encuesta una vez finalizada?**

- Las respuestas individuales son confidenciales.
- Se incluye un resumen de las respuestas de todas las familias en un informe anual sin detalles nombres ni información que permita identificar a los encuestados.
- Este informe se usa para ayudar a mejorar el programa.

**Tenga en cuenta:**

- Hacer la encuesta no debería tomar más de 10 minutos.
- Puede completarla en papel o de manera electrónica.
- Está disponible en seis idiomas.

**Si necesita ayuda para completar la encuesta, comuníquese con la Oficina de Early Intervention (Oficina de Intervención Temprana)**

New York State Department of Health  
Bureau of Early Intervention  
(518) 473-7016  
bipub@health.ny.gov  
[https://www.health.ny.gov/community/infants\\_childcare/early\\_intervention/](https://www.health.ny.gov/community/infants_childcare/early_intervention/)

10000 (Spanish) Department of Health 10/22

**Encuesta sobre objetivos familiares**  
(Comparta la experiencia de su familia!)



**¿Por qué el EIP necesita conocer la opinión de las familias?**

Las familias pueden darnos información muy importante sobre las formas en que los servicios del Programa de Intervención Temprana (EIP) las ayudan a ellas y a sus hijos. Su opinión nos permite ver las áreas donde podemos hacer cambios para mejorar la asistencia que les damos.

**¿Por qué necesitamos su ayuda?**

El año pasado, sólo el 14 % de las personas respondieron la encuesta. Esto significa que nos quedamos sin conocer la opinión del 86 % de las familias.

**¿Qué puede hacer para ayudar?**

Le pedimos que complete nuestra breve encuesta y que nos indique qué es lo que estamos haciendo bien y cómo podemos mejorar la ayuda que damos a todas las familias.

**Si tiene alguna pregunta o necesita ayuda con la encuesta, llame al 518-473-7016.**



**Nuestro objetivo es que, al finalizar el programa, usted:**

- Conozca los derechos de su hijo y su familia en relación con los servicios del EIP
- Aprenda a comunicarse de manera más clara con las personas que trabajan con su hijo y su familia.
- Comprenda las necesidades especiales de su hijo.

**Queremos asegurarnos de que todas las familias estén representadas!**

**Si necesita ayuda para completar la encuesta, comuníquese con la Oficina de Early Intervention (Oficina de Intervención Temprana)**

New York State Department of Health  
Bureau of Early Intervention  
(518) 473-7016  
bipub@health.ny.gov  
[https://www.health.ny.gov/community/infants\\_childcare/early\\_intervention/](https://www.health.ny.gov/community/infants_childcare/early_intervention/)



**NEW YORK STATE DEPARTMENT OF HEALTH**

**New York State Early Intervention Program Family Outcome Survey**

Please check one answer about the services your child and family received in the Early Intervention Program. Please complete either the paper survey or the online survey, not both. Your input will help us to improve the quality of services for all children and families.

Early intervention services have helped me and/or my family:

	Not at all	Some	Very	Not at all	Some	Very
1. Understand how the Early Intervention system works.						
2. Understand the roles of the people who work with my child and family.						
3. Communicate more effectively with the people who work with my child and family.						
4. Be able to evaluate how much progress my child is making.						
5. Know about my child's and family's rights concerning Early Intervention services.						
6. Get the services that my child and family need.						
7. Feel that I can get the services and supports that my child and family need.						
8. Know where to go for support to meet my child's needs.						
9. Know where to go for support to meet my family's needs.						
10. Understand my child's special needs.						
11. Feel more confident in my skills as a parent.						
12. Feel that my efforts are helping my child.						
13. Be more effective in managing my child's behavior.						
14. Make changes in family routines that will benefit my child with special needs.						
15. Do things with and for my child that are good for my child's development.						
16. Do activities that are good for my child even in times of stress.						
17. Improve my family's quality of life.						
18. Keep up friendships for my child and family.						
19. Feel that my child will be accepted and welcomed in the community.						
20. Feel that my family will be accepted and welcomed in the community.						
21. Know about services in the community.						
22. Participate in typical activities for children and families in my community.						
23. Think back on your child and family's time in the Early Intervention Program. If your child received Telehealth services, they worked well. Telehealth services mean your child received services through a computer, tablet, or smartphone.						
24. Think back on your child and family's time in the Early Intervention Program. Telehealth services may not have been available to your child and family. If they were available, would you have used them? Telehealth services mean your child received services through a computer, tablet, or smartphone.						

Yes No Maybe

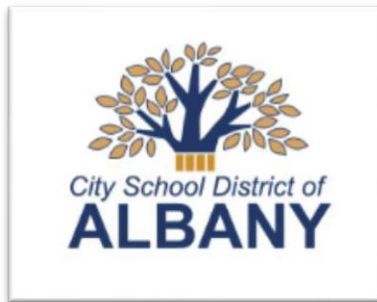
# Family Outcomes Survey Video



# Outreach Activities

# Community Events, Professional Conferences, and Job Fair

- The Hannaford Kids Expo
- The Albany City Schools Autism Fair
- The Dr. Martin Luther King, Jr. Career Fair – New York State Department of Labor
- The New York State Perinatal Association Conference



# Questions?

