



1

Learning Objectives

1. Recognize how the acute and long term impacts of climate change may present clinically to healthcare providers.
2. Identify ways health care providers can play a key role in adaptation strategies to reduce the health impacts of climate change
3. Discuss how climate change initiatives implemented by the healthcare industry benefit public health.

2

2

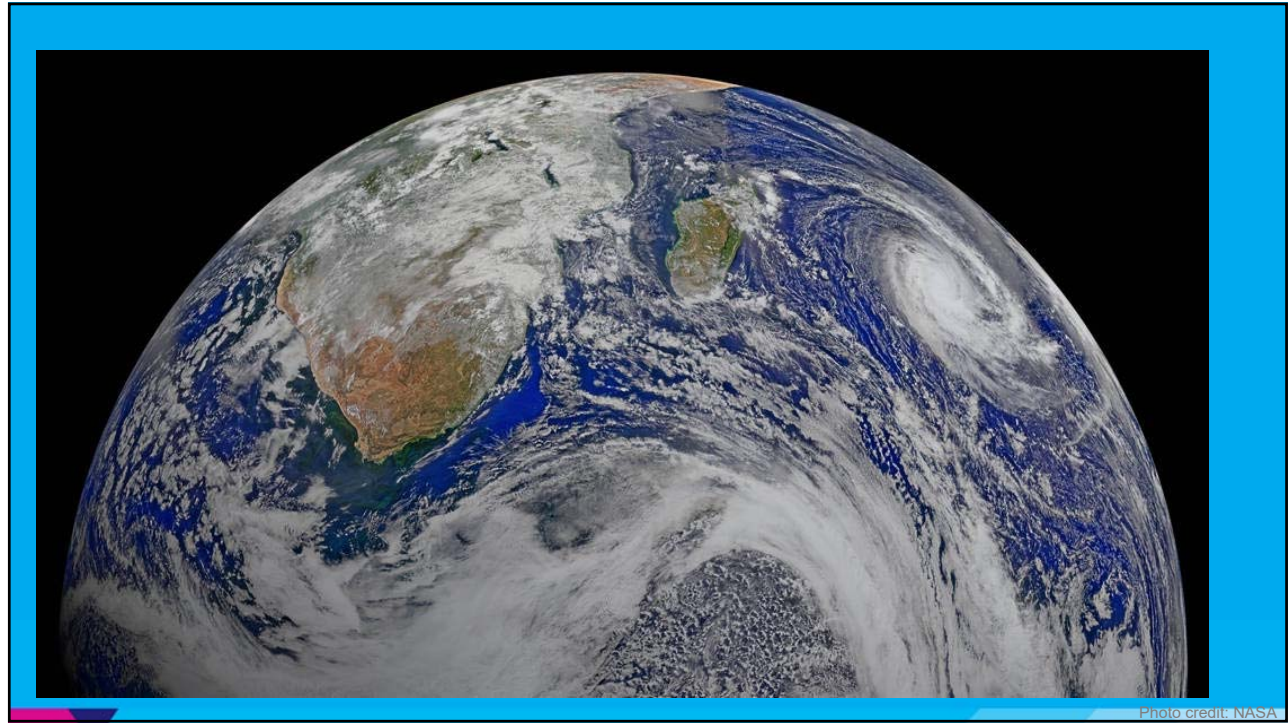


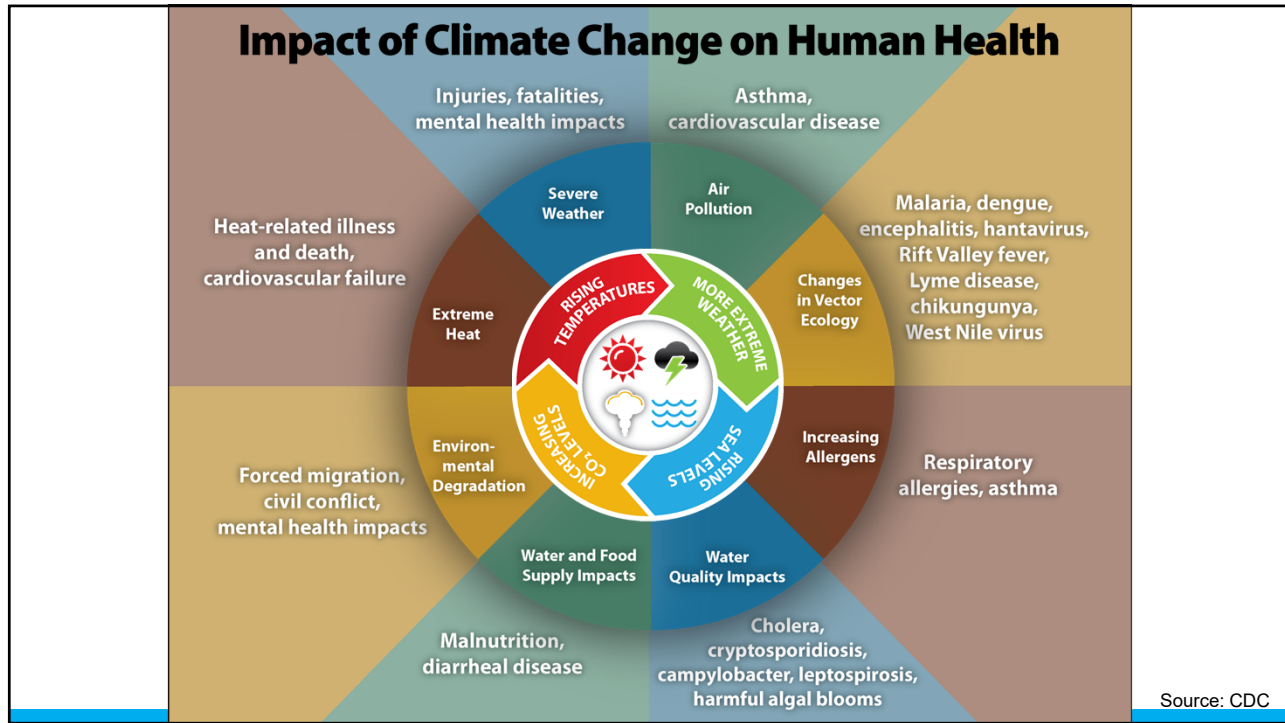
Photo credit: NASA

3

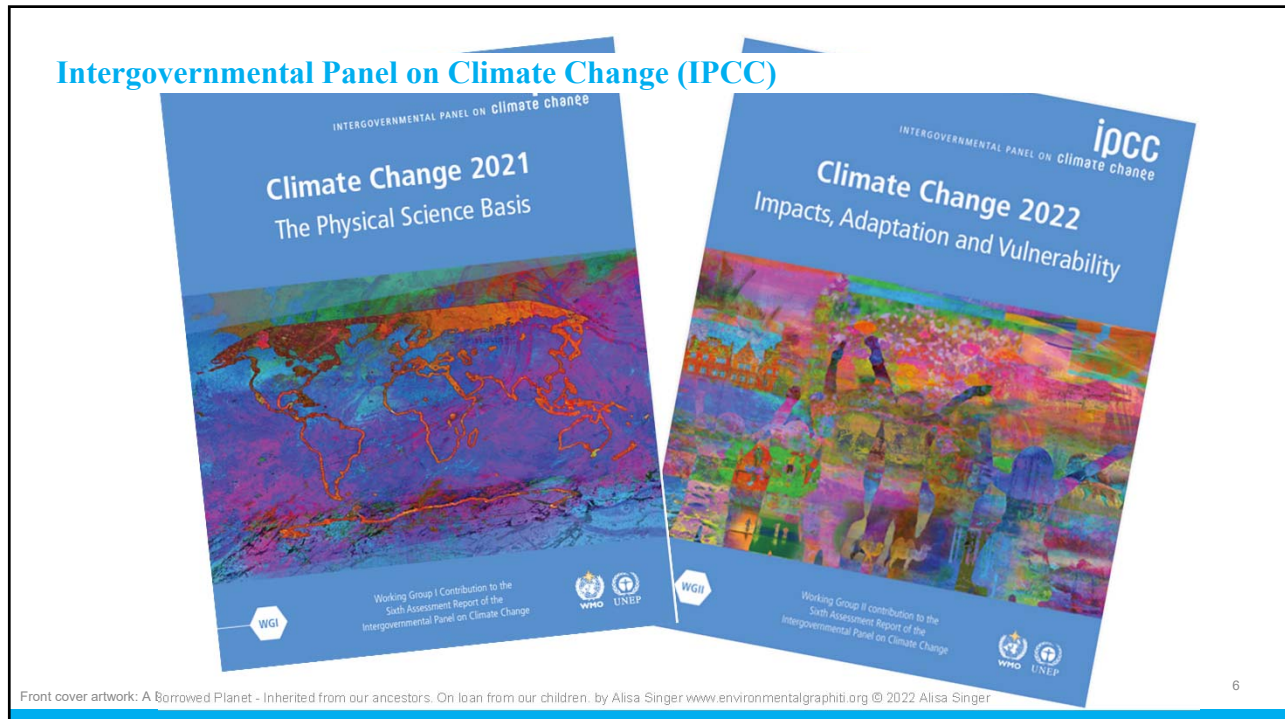


Earth's atmosphere and moon. Slide credit: NASA

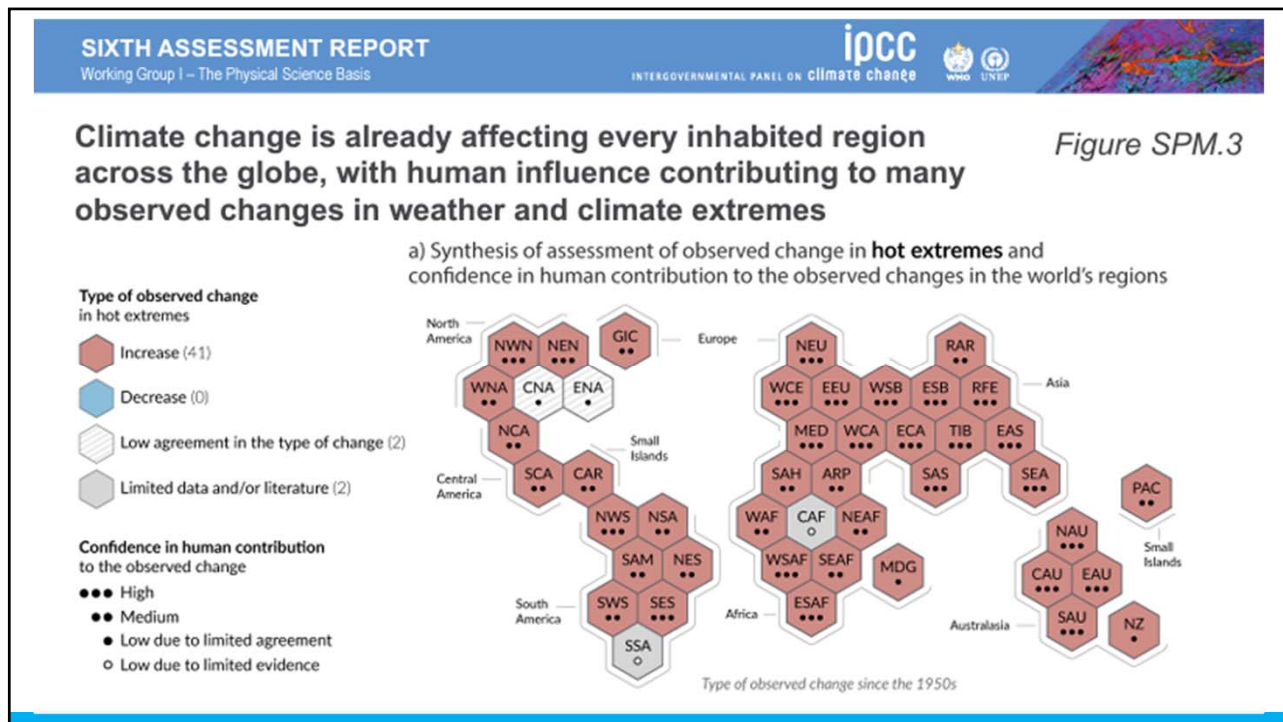
4



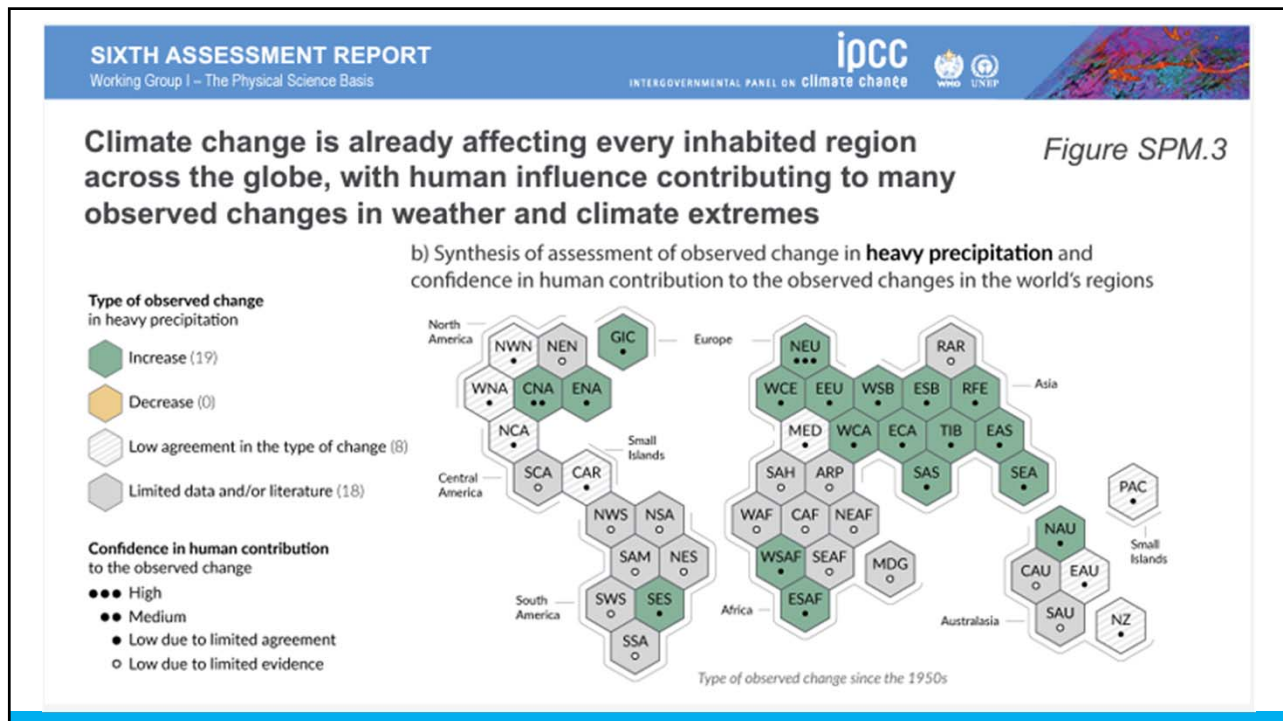
5



6



7



8



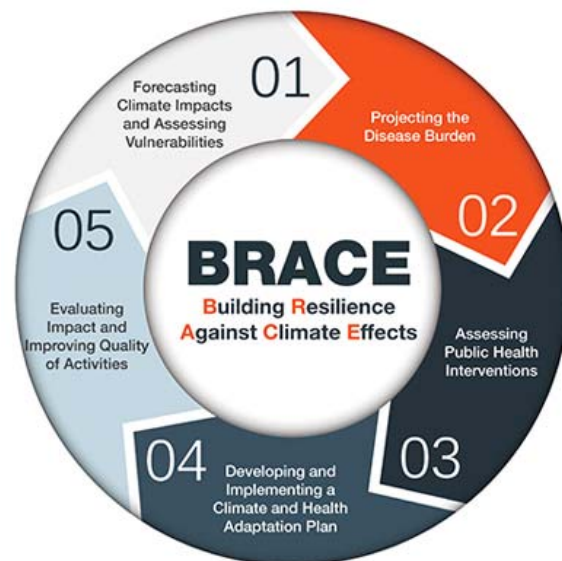
This image was created with the assistance of DALL·E 2

9

9

CDC's Building Resilience Against Climate Effects (BRACE) Framework

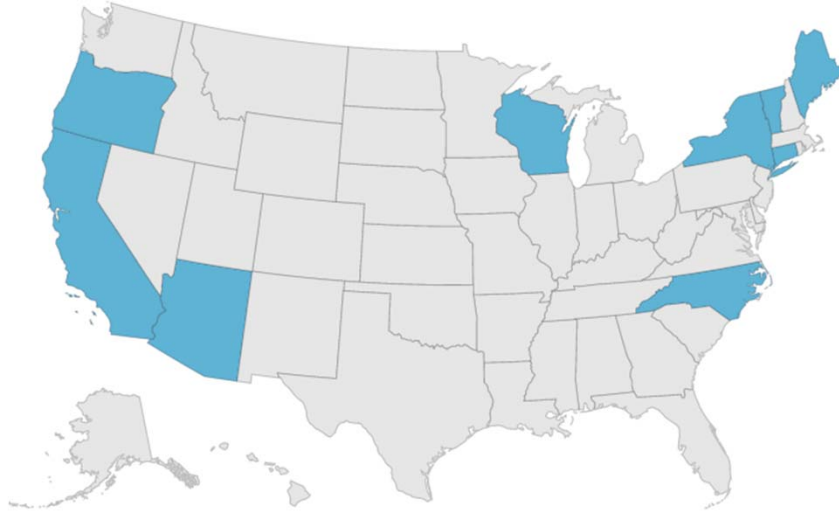
- a five-step process that allows health officials to develop strategies and programs to help communities prepare for the health effects of climate change



10

10

CDC's Current Climate-Ready States & Cities Initiative Grant Jurisdictions



11

11



Image by [George](#) from [Pixabay](#)

12

12

Coming soon...



13

13

What specifically will the Assessment include?

- Up-to-date **projections** of future climate conditions in New York State
- Sector-based **literature reviews**
- In-depth **economic impact assessments**
- A peer-reviewed **technical report** that conveys scientific findings
- **Summaries** and **syntheses** for a wider audience
- Adaptation **strategies** and **case studies**
- **Links** and **references** to primary sources for full transparency

<https://nysclimateimpacts.org/about/what-will-the-assessment-include/>

14

14

Assessment Topics

-  Agriculture
-  Buildings
-  Ecosystems
-  Energy
-  Human Health and Safety
-  Society and Economy
-  Transportation
-  Water Resources

<https://nysclimateimpacts.org/about/what-will-the-assessment-include/>

15

15

What do we know about the health impacts of climate change in New York?

- Impacts are already happening
- Specific threats include heat, heavy rain, flooding, impaired water and air quality, infectious causes, and stress
- Since the last assessment (2011), the mental health impacts are more clearly understood
- Structural racism is makes the health-risks worse
- Committed resources is other sectors (across all policies) is critical to protect health

16

16



17

Image by It is not permitted to sell my photos with StockAgencies from Pixabay

17

AJPH METHODS

Building New York State Centers of Excellence in Children's Environmental Health: A Replicable Model in a Time of Uncertainty

Public health programs may be seriously affected in periods of federal retrenchment. During these times, state-based strategies provide an alternate pathway

Maida Gaber, MD, MPH, Geoffrey Collins, MD, MPH, Robert W. Ander, MD, MBA, Allen Dorot, MD, Emma Kaplan-Liss, MD, Joel Forman, MD, Danielle Lasaga-Ariza, MD, Ruth Lawrence, MD, Richard Miller, PhD, Kevin Miller, BS, Pree Sheffield, MD, MPH, Laura Ziga, MD, MPH, and Philip J. Landrigan, MD, MS

New York State Children's Environmental Health Centers

18

Western NY
Oishei Children's Hospital
Buffalo

Finger Lakes
Golisano Children's Hospital
Rochester

Central NY
Upstate Golisano Children's
Hospital
Syracuse

Capital Region
Duker Children's Hospital
Albany

Hudson Valley
Maria Farení Children's Hospital
Vathalla (Westchester)

New York City
Children's Environmental
Health Center at Mount Sinai

Western Long Island
Cohen Children's Hospital
New Hyde Park (Nassau)

Eastern Long Island
Stony Brook Children's Hospital
Stony Brook (Suffolk)

19

By the Numbers 2017-2022

151,406

Families Served
through clinical services and
educational outreach

32,810

**Health Workers
Educated**
(Medical, public health and
allied health professions)

1,792

**Future Leaders
Trained**
(Health Professions, College
and High School)

New York State Children's
Environmental Health Centers

Wow!

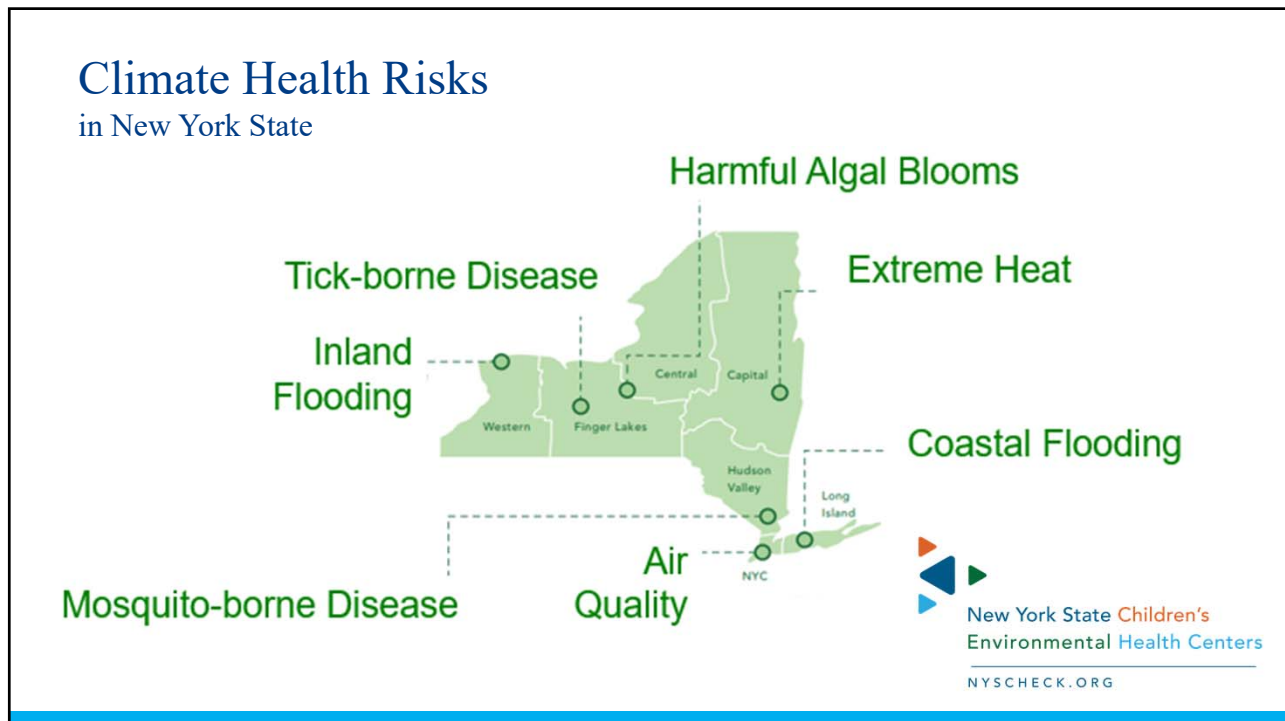
62/62

**New York State
Counties Served**

20



21



22

New York State Children's Environmental Health Centers

We Are **Topics** Projects Education Rx for Prevention Ask a Question

Climate Change and Child Health in New York State

Our team of environmental pediatricians has put together some information to help healthcare providers and the public understand why climate change is another form of environmental racism that unfairly affects the health of low income and black and brown communities more than others.

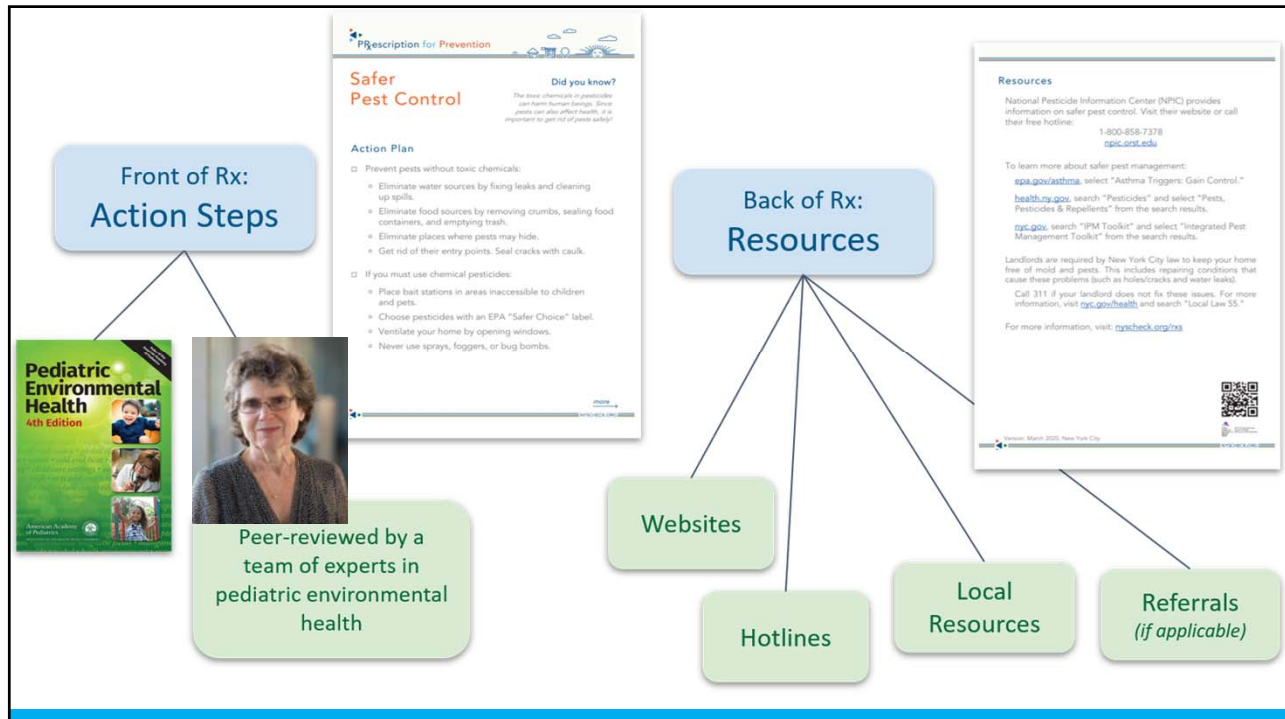
Climate change is accelerating health disparities across communities.

These disparities are costly.



There are impactful solutions for individuals and communities.

NYSHECK.org

23



24

Extreme Heat Safety for babies

Did you know?
Extreme heat days are becoming more common as the climate gets warmer. When it's hot, babies are more in danger than adults of becoming dehydrated.

Action Plan

- **Keep cool:**
 - Keep babies in cool spaces, ideally with air-conditioning. Coverings should match adults' clothing plus one light layer.
 - In warm settings, sponge babies with lukewarm water.
 - Never leave a baby alone in a car.


Extreme Heat Safety tips

- For babies
- For children
- During pregnancy
- For student athletes


<https://nyscheck.org/rx/>

25

EH Scholars focusing on climate curriculum




Laurie Thibodeau, MD
Albany NYCHECK
Focus: Medical Education




Christina Padgett, MD
Buffalo-Western NY CEHC
Focus: Pediatric Residency

Applications for more scholars are open now!

<https://nyscheck.org/eh-scholars/>



Climate Change Curriculum Infusion Project



26



Summer Academy Course Directors:



Melanie Gabrell
HBCAC



Karen Miller
HBCAC



Amy Brown, MD, MBE



Sandra Jee, MD, MPH



Cappy Collins, MD, MPH



Sarah Evans, PhD, MPH



John Culhane
tactic-ux

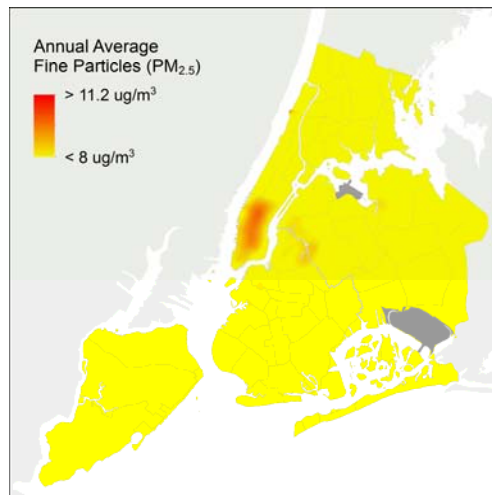
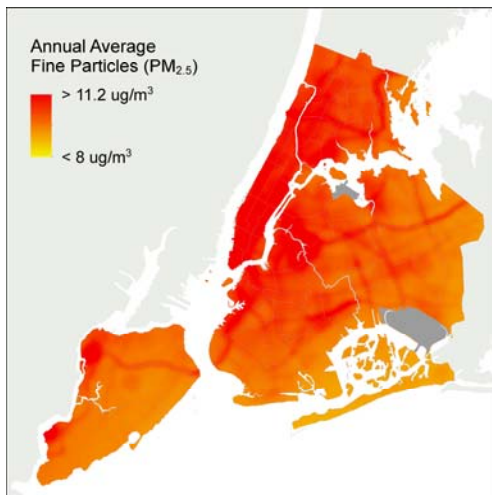
86 NYS trainees (HS, college, MPH, doctoral, med students, MDs)
8 Weeks: Didactics, Team building, Student-led climate change projects

Environmental Justice Champions: Working Together to Address the Climate Crisis (June and July 2023)

The application process is now open for Summer 2023: [NYSCHECK Summer Academy 2023 - NYSCHECK](#)

27

**What we do affects our Environment:
 Fine Particulate Matter in NYC, 2009 (left) and 2020 (right)**



<https://www.nyc.gov/site/doh/about/press/pr2022/earth-day-new-report-on-nyc-air-quality.page>

28

28

5th Annual Clinical Climate Change Conference

June 6, 2023

HYBRID/NYC

Clinical Care for Workers in the Climate Crisis

<https://mountsinaixposomics.org/events/clinical-climate-change/>

Featured Speaker
 John Howard, MD, MPH, JD, LLM, MBA
 Director, National Institute for Occupational Safety and Health

Early Bird Registration: April 1
 Poster Abstracts Due April 28

<https://mountsinaixposomics.org/events/clinical-climate-change/>

29

It Takes A Village...

30

30

Acknowledgements

- This presentation was supported in part by the American Academy of Pediatrics (AAP) and funded (in part) by a cooperative agreement with the Centers for Disease Control and Prevention/Agency for Toxic Substances and Disease Registry (CDC/ATSDR). The U.S. Environmental Protection Agency (EPA) supports the PEHSUs by providing partial funding to CDC/ATSDR through an Inter-Agency Agreement.
- The findings and conclusions presented have not been formally disseminated by CDC/ATSDR or EPA and should not be construed to represent any agency determination or policy. Use of trade names that may be mentioned is for identification only and does not imply endorsement by the CDC/ATSDR or EPA.
- NYSDOH NYS Children's Environmental Health Centers
- National PEHSU Program
- Region 2 EPA Supplements
- T32 NIEHS Environmental Peds Fellowship
- P30 ES023535