

BRFSS Brief

Number 1107

The Behavioral Risk Factor Surveillance System (BRFSS) is an annual statewide telephone survey of adults developed by the Centers for Disease Control and Prevention and administered by the New York State Department of Health. The BRFSS is designed to provide information on behaviors, risk factors, and utilization of preventive services related to the leading causes of chronic and infectious diseases, disability, injury, and death among the noninstitutionalized, civilian population aged 18 years and older.

Breast Cancer Screening

New York State Adult Women 2010

Introduction and Key Findings

Breast cancer is the leading cause of cancer and the second leading cause of cancer deaths among women in New York State (NYS). There are approximately 14,000 new cases of breast cancer diagnosed each year in NYS, and almost 2,800 women die from the disease annually. The risk of breast cancer increases with age and varies across racial groups. White women are more likely than black women to be diagnosed with breast cancer and less likely to have breast cancer diagnosed at a late stage. Among women with breast cancer, black women are more likely than white women to die from the disease.¹

Screening for breast cancer can increase the likelihood of identifying cancer at early stages when treatment is most successful. Women aged 50 to 74 years should get a mammogram every two years. Women aged 40 to 49 years, those with family histories or other risk factors for breast cancer, or those who have any symptoms or changes in their breasts, should talk to their doctors about what screening schedule is right for them.² Although breast cancer screening recommendations may vary between organizations, each woman should be aware of her personal risk for breast cancer and decide, with her doctor, when and how she should be screened for breast cancer.

NYS has met the HP 2020 objective of 81.1% of women aged 50 to 74 receiving breast cancer screening every two years, with 81.5% of NYS women, aged 50-74, indicating that they have received a mammogram within the past two years. There are some subpopulations that are less likely to be screened. In NYS, women aged 40 to 74 years without health insurance are significantly less likely to have received a mammogram within the past two years (56.1%) compared to women aged 40 to 74 years with health insurance (79.6%).

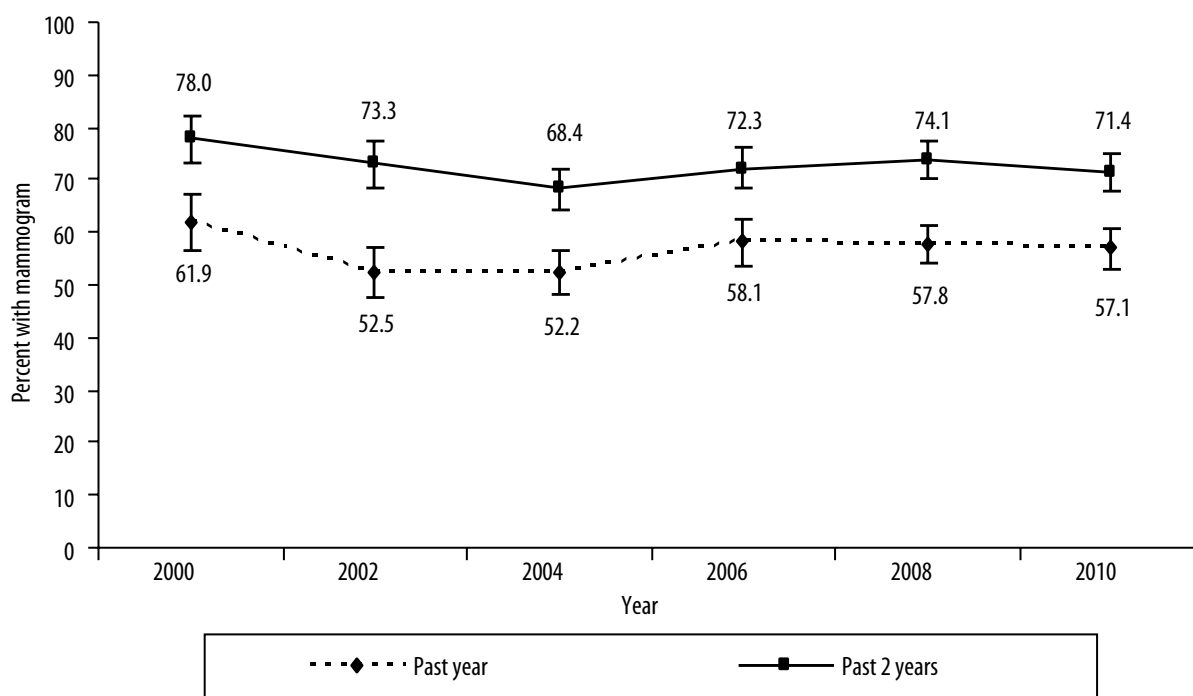
BRFSS Questions

1. *A mammogram is an x-ray of each breast to look for breast cancer. Have you ever had a mammogram?*

[If "yes":]

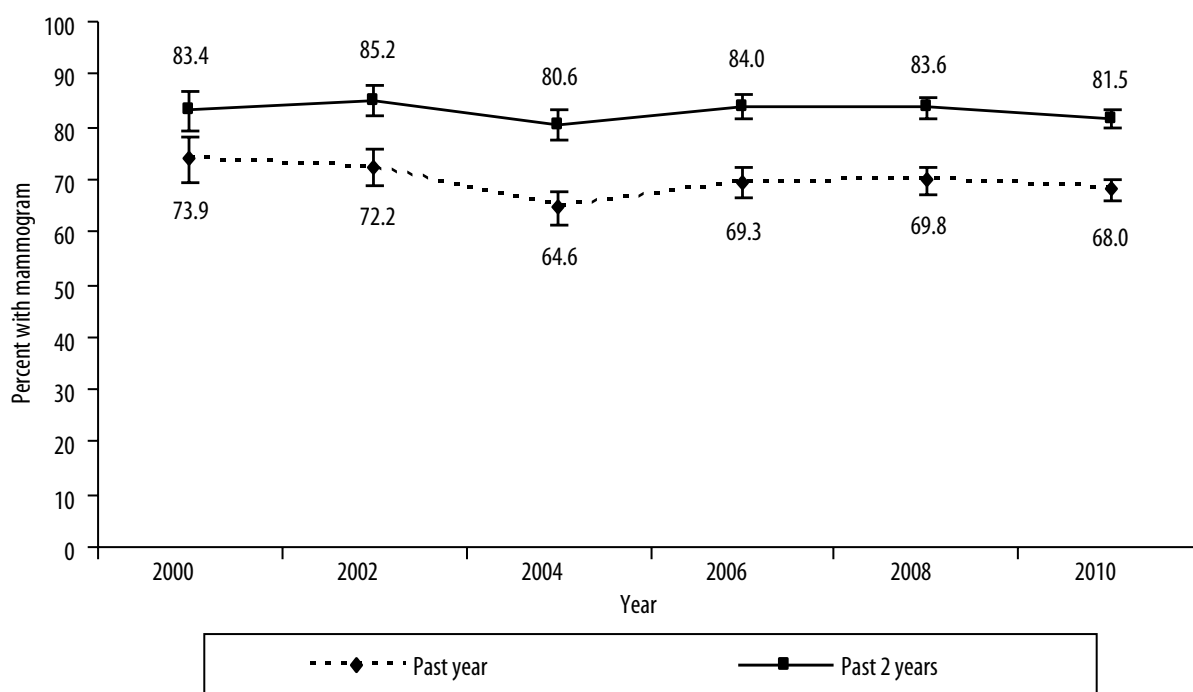
2. *How long has it been since you had your last mammogram?*

History of mammogram (within past year, within past 2 years) among New York women aged 40-49 years, by BRFSS survey year



Note: Error bars represent 95% confidence intervals.

History of mammogram (within past year, within past 2 years) among New York women aged 50-74 years, by BRFSS survey year



Note: Error bars represent 95% confidence intervals.

History of mammogram (ever, within past year, within past 2 years) among New York women aged 40-74 years, by selected characteristics, 2010 BRFSS

	Mammogram history					
	Ever		Within past year		Within past 2 years	
	% ^a	95% CI ^a	%	95% CI	%	95% CI
Total New York State (NYS) [N=3,594]	92.3	91.0-93.4	63.8	61.8-65.8	77.7	75.9-79.4
Age (years)						
40-49	86.2	83.2-88.7	57.1	53.2-61.0	71.4	67.7-74.8
50-74	96.1	95.1-96.9	68.0	65.8-70.0	81.5	79.7-83.2
Race/ethnicity						
White non-Hispanic	92.7	91.2-94.0	63.6	61.3-65.8	77.9	75.9-79.8
Black non-Hispanic	91.1	86.8-94.1	66.8	60.9-72.3	78.8	73.2-83.5
Hispanic	96.2	91.8-98.3	68.5	61.2-75.0	83.8	78.0-88.4
Other non-Hispanic	83.2	74.3-89.5	53.4	43.6-62.9	61.0	51.1-70.1
Annual household income						
< \$15,000	90.1	84.2-94.0	63.0	56.0-69.5	73.8	67.2-79.6
\$15,000-\$24,999	90.8	86.6-93.8	58.9	52.9-64.7	72.9	67.5-77.7
\$25,000-\$34,999	91.6	86.4-94.9	57.6	50.3-64.5	74.3	67.3-80.3
\$35,000-\$49,999	93.3	88.9-96.0	62.9	56.8-68.5	77.5	72.0-82.1
\$50,000-\$74,999	93.5	90.1-95.8	62.4	57.2-67.4	78.8	73.9-83.0
≥ \$75,000	92.6	90.1-94.5	67.4	63.9-70.8	79.8	76.6-82.7
Missing ^b	92.4	88.6-95.0	64.7	59.0-70.0	79.2	74.2-83.4
Educational attainment						
Less than high school	93.7	86.9-97.1	60.9	52.3-69.0	72.4	63.8-79.6
High school or GED	91.7	89.0-93.8	65.7	61.7-69.4	78.2	74.7-81.3
Some post-high school	92.6	89.8-94.8	62.8	58.6-66.8	77.7	74.0-81.0
College graduate	92.3	90.2-93.9	63.7	60.7-66.6	78.1	75.4-80.6
Health care coverage (insured)						
Yes	93.3	92.1-94.4	65.6	63.6-67.6	79.6	77.8-81.3
No	82.3	75.5-87.6	45.5	38.1-53.0	56.1	48.5-63.4
Disability^c						
Yes	93.6	91.3-95.3	62.9	59.3-66.3	76.0	72.7-79.1
No	91.8	90.2-93.2	64.2	61.7-66.5	78.2	76.1-80.3
Residence						
New York City (NYC)	92.7	90.6-94.4	65.6	62.3-68.7	79.6	76.7-82.2
NYS exclusive of NYC	92.0	90.3-93.5	62.6	60.1-65.1	76.3	74.0-78.5

a % =Percentage; 95% CI =Confidence interval (at the 95 percent probability level). Percentages are weighted to population characteristics.

b "Missing" category included because more than 10% of the sample did not report income.

c All respondents who report activity limitations due to physical, mental, or emotional problems OR have health problems that require the use of special equipment.

References

1. New York State Cancer Registry. Cancer incidence and mortality for New York State, 2004-2008. New York State Department of Health, 2011. Available at: <http://www.nyhealth.gov/statistics/cancer/registry/>
2. Centers for Disease Control and Prevention Breast Cancer Screening, 2011 Available at: http://www.cdc.gov/cancer/breast/basic_info/screening.htm
3. New York State Department of Health. Prevention Agenda Toward the Healthiest State. Priority Area: Access to Quality Health Care. Available at: http://www.health.state.ny.us/prevention/prevention_agenda/access_to_health_care/index.htm.
4. HealthyPeople.gov, 2020 Topics and Objectives: Cancer. Available at: <http://www.healthypeople.gov/2020/topicsobjectives2020/objectiveslist.aspx?topicId=5>

Program Contributions

New York State Department of Health
Bureau of Chronic Disease Evaluation and Research
Bureau of Chronic Disease Control

Order Information

Copies may be obtained by contacting:

BRFSS Coordinator
New York State Department of Health
Bureau of Chronic Disease, Epidemiology
and Surveillance
Empire State Plaza, Rm. 565
Corning Tower
Albany, NY 12237-0679

Or by phone or electronic mail:

(518) 473-0673
or
BRFSS@health.state.ny.us
or
www.health.ny.gov