

Hudson Valley Region

Trauma Registry Regional Progress Report 2010-2013

New York State Department of Health

Office of Primary Care and Health Systems Management

May, 2016

Table of Contents

Executive Summary

Patient Information

- Summary Statistics
- Mechanism of Injury

Emergency Medical Services

- Response Times
- Transport Times
- Initial Destination

Referring Hospital Statistics

- Time at Referring Hospital

Trauma Center Statistics

- Length of Stay
- Complications
- Initial Wait Time
- Discharge Disposition

Performance Benchmarks

- Risk Ratios
- Risk Adjusted Fatality Rates

Injury Statistics

- Characteristics of Injury Incidence
- Emergency Department Visits
- Hospitalizations
- Deaths

Executive Summary

Introduction

The purpose of this report is to present summary statistics of trauma-related injuries and outcomes of the care provided in each of the eight trauma regions in the State. For the years 2010-2013 there were a total of 40 trauma centers designated in New York State. Trauma clinicians, administrators and policy makers may use this report to identify important areas and issues for enhancing systems development and clinical quality improvement in their regions. The public may use this report to learn more about the trauma system in their region. As trauma centers in New York State transition to the standards of the American College of Surgeons Committee on Trauma, and additional levels of trauma center are added to the State system, this report will serve as a baseline for measuring improvements in outcome and injury prevention in each region.

Data Sources

The New York State Trauma Registry serves as the data source. Trauma patients identified as residents of the Hudson Valley Region were included.

Acknowledgement

The State Health Department would like to thank: the New York Trauma Center program staff and the Bureau of Emergency Medical Services and Trauma Systems program manager of the Office of Primary Care and Health Systems Management who have worked diligently to provide the data utilized in this report, the NYSDOH Bureau of Occupational Health and Injury Prevention for the injury statistics, and the Data Management, Analysis and Research Group who created the trauma registry and performed the statistical analyses to generate the tables and figures presented in this report.

Data Summary

This report summarizes the trauma cases for residents of the Hudson Valley Region for the discharge years 2010-2013, who were included in the New York State Trauma Registry. There were a total of 7,628 trauma cases amongst the residents of the Hudson Valley Region. The key findings include the following:

- ▶ Annually, there were an average of 1,907 trauma incidents with a 5.55% case fatality rate.
- ▶ The median EMS response time was 9 minutes.
- ▶ The median transport time to an appropriate trauma center was 21 minutes, for adults, and 28 minutes, for children under 15 years of age.
- ▶ 30% of pediatric trauma patients were transported to an appropriately designated center.
- ▶ The median time at a referring hospital prior to transport to a trauma center for patients with an injury severity score of ≥ 25 was 3 hours.
- ▶ The median length of stay for surviving patients with an injury severity score of ≥ 25 was 13.1 days.
- ▶ The median time in the emergency department for patients with an injury severity score of ≥ 25 was 3.7 hours.
- ▶ The risk ratio, $\frac{\text{observed fatality rate}}{\text{expected fatality rate}}$, for all trauma from the Hudson Valley Region was 0.97. (State average is 1)



Hudson Valley Region (HVR) Incident Summary (with comparison to state)

Categories	Hudson Valley Region		Incidence*		Case Fatality Rate**	
	Incidents	Fatalities	HVR	State	HVR	State
Year						
2010	1,843	93	8.03	9.05	5.05	6.39
2011	1,883	112	8.17	8.73	5.95	6.79
2012	1,978	103	8.57	8.59	5.21	6.77
2013	1,924	115	8.29	8.16	5.98	6.58
Age						
0-5	406	5	5.91	5.38	1.23	2.14
6-13	351	5	3.48	3.06	1.42	1.73
14-34	2,014	56	8.39	8.06	2.78	4.96
35-64	2,588	104	6.81	7.17	4.02	5.28
65+	2,268	253	18.58	21.13	11.16	10.63
Sex						
Male	5,037	288	11.12	11.72	5.72	6.80
Female	2,591	135	5.52	5.72	5.21	6.31
ISS						
0-9	2,455	38	2.66	3.07	1.55	1.77
10-15	1,687	28	1.83	1.83	1.66	1.86
16-24	1,983	82	2.15	2.23	4.14	4.44
25-34	788	182	0.85	0.89	23.10	25.31
35-75	222	67	0.24	0.31	30.18	45.37
NA	493	26	0.53	0.29	5.27	6.73
Four Year Total						
All Trauma	7,628	423	8.27	8.63	5.55	6.63

* Incidents per 10,000 residents

** Case Fatality Rate as a percent



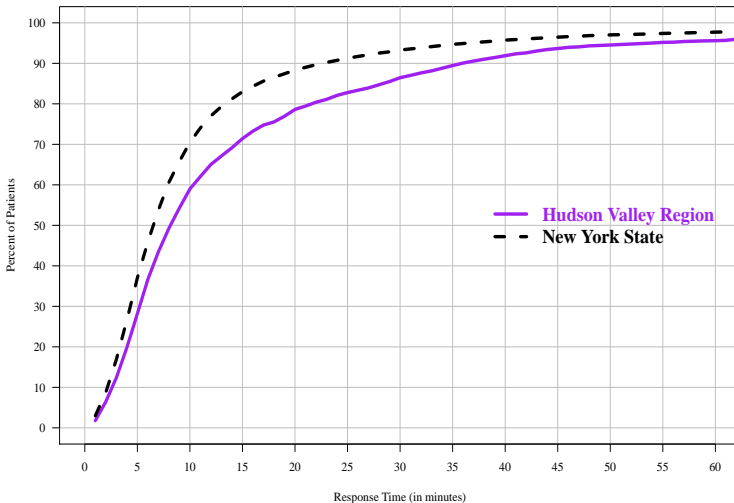
Hudson Valley Region (HVR) Regional Incident Classification (with comparison to state)

Category	Hudson Valley Region		Incidence*		Case Fatality Rate**	
	Incidents	Fatalities	HVR	State	HVR	State
Selected Mechanism of Injury						
Fall	3,117	235	3.38	3.67	7.54	7.33
Motor Vehicle Traffic	2,521	111	2.73	2.47	4.40	6.67
Struck by, against	439	7	0.48	0.55	1.59	2.07
Transport, non traffic	270	11	0.29	0.28	4.07	3.16
Firearm	173	13	0.19	0.38	7.51	14.02
Unspecified	95	9	0.10	0.13	9.47	7.05
Intention of Injury						
Unintentional	6,571	376	7.12	6.99	5.72	6.60
Assault	501	12	0.54	1.02	2.40	5.87
Undetermined/Other	491	14	0.53	0.54	2.85	6.45
Self-Inflicted	65	9	0.07	0.08	13.85	19.88
Type of Injury						
Blunt	6,580	371	7.13	7.18	5.64	6.41
Other	715	35	0.77	0.82	4.90	6.15
Penetrating	333	17	0.36	0.63	5.11	9.79
Four Year Total						
All Trauma	7,628	423	8.27	8.63	5.55	6.63

* Incidents per 10,000 residents

** Case Fatality Rate as a percent

Emergency Medical Service Response Time*

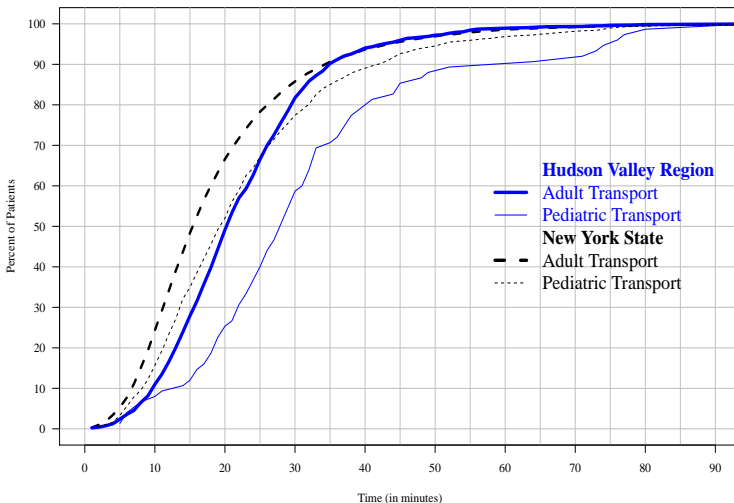


This plot shows the percent of incidents responded to by EMS within a given time period.

*Response time is calculated as the time from emergency phone call to medical service's arrival at scene.



Emergency Medical Service Transport Time* to Patient Appropriate Trauma Center**



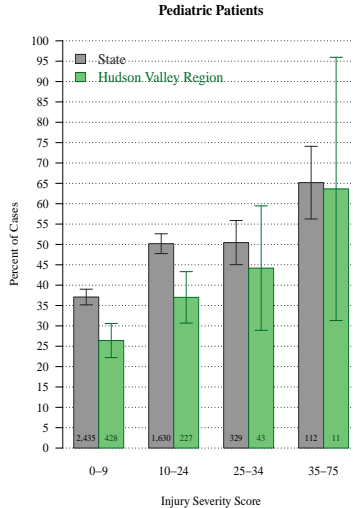
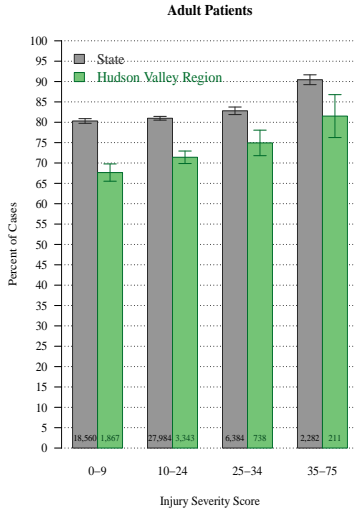
This plot shows the percent of trauma patients transported to an appropriate center within a given time period.

*Transport time is calculated as time from emergency medical service's departure from the scene of injury to arrival at hospital.

**Patient appropriate trauma center means either pediatric or dual designated for patients under 15 and either adult or dual designation for patients over 15 years of age.



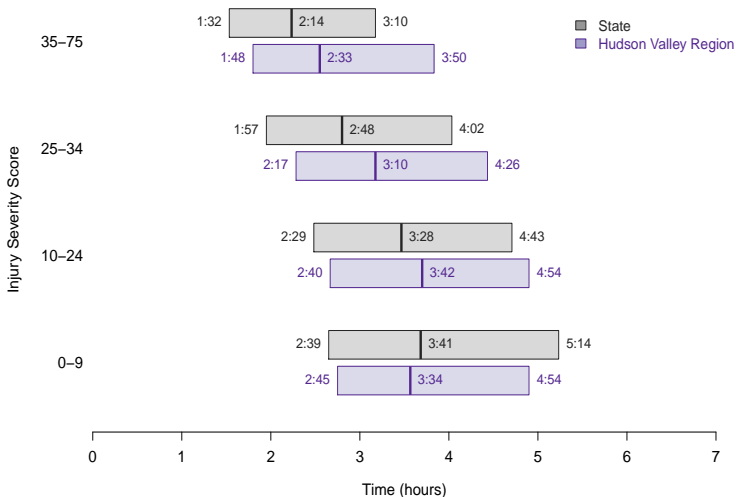
Patients Transported by EMS to an Appropriate Trauma Center by Designation and Injury Severity Score



Registry data only includes data from patients that made it to a Trauma Center. Walk-ins excluded. 95% confidence intervals are shown around means.

Appropriate trauma center means either pediatric or dual designated for patients under 15 and either adult or dual designated for patients over 15 years of age.

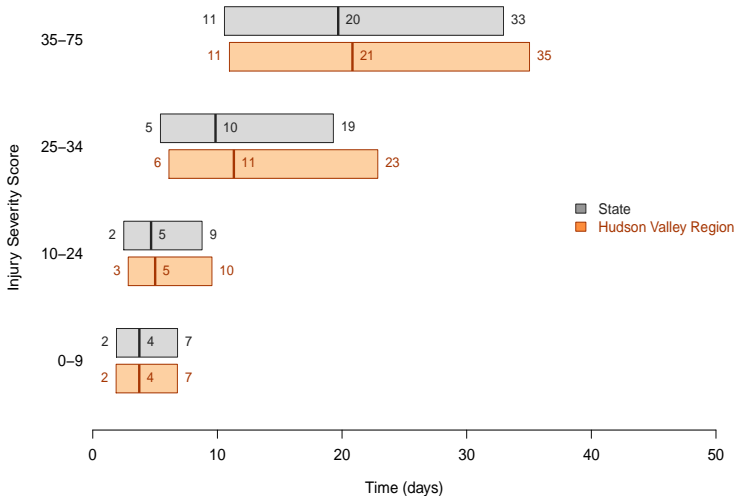
Quartile Plot of Time at Referring Hospital by Injury Severity Score (for patients who were referred to a trauma center)



The quartile plot highlights the middle 50% of patients with the box. The center line denotes the median (the 50th percentile), 25% of patients therefore fall below the range of the box, and 25% fall above the range of the box.



Quartile Plot of Length of Stay by Injury Severity Score (for patients who lived)



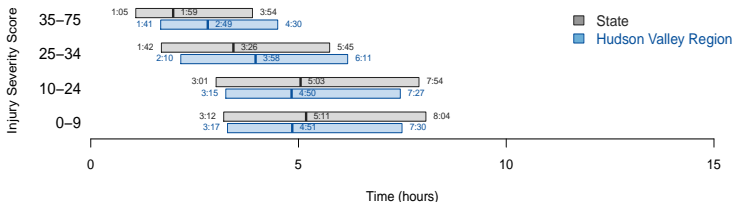
The quartile plot highlights the middle 50% of patients with the box. The center line denotes the median (the 50th percentile), 25% of patients therefore fall below the range of the box, and 25% fall above the range of the box.



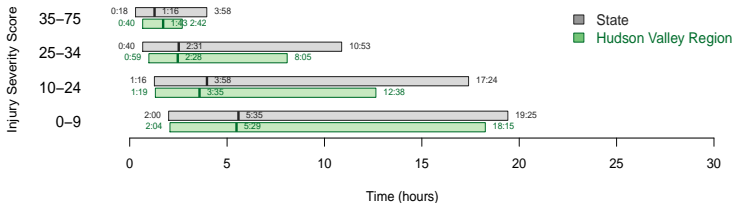
Hudson Valley Region (HVR) Complication Incidence and Mortality

Complications	Hudson Valley Region		Frequency (%)		Fatality Rate (%)	
	Incidents	Fatalities	HVR	State	HVR	State
other unspecified	755	114	9.90	4.31	15.1	18.4
acute lung injury	527	120	6.91	2.25	22.8	24.0
pneumonia	239	29	3.13	2.71	12.1	16.5
new urinary tract infection	210	11	2.75	1.96	5.2	8.2
acute kidney injury	132	37	1.73	0.89	28.0	28.1
deep vein thrombosis	116	15	1.52	0.83	12.9	9.5
severe sepsis	91	27	1.19	0.93	29.7	33.3
withdrawal from alcohol or drugs	90	4	1.18	0.94	4.4	2.8
new decubitus ulcer	76	11	1.00	0.69	14.5	13.4
cardiac arrest in hospital	61	49	0.80	0.88	80.3	82.7
extremity compartment syndrome	49	2	0.64	0.31	4.1	4.8
unplanned intubation	41	12	0.54	0.62	29.3	28.9
pulmonary embolism	38	9	0.50	0.35	23.7	13.5
new myocardial infarction	32	4	0.42	0.24	12.5	33.3
organ or space surgical site infection	29	1	0.38	0.11	3.4	4.0
superficial surgical site infection	26	1	0.34	0.19	3.8	2.3
deep surgical site infection	24	2	0.31	0.13	8.3	7.8
catheter related blood stream infection	19	4	0.25	0.10	21.1	14.3
new stroke or cerebral vascular accident	14	3	0.18	0.14	21.4	18.6
unplanned return to ICU	14	2	0.18	0.13	14.3	12.8
failure of graft, flap, or prosthesis	8	0	0.10	0.03	0.0	0.0
new bone infection	5	0	0.07	0.03	0.0	0.0

Quartile Plot of Time In Emergency Department by Injury Severity Score

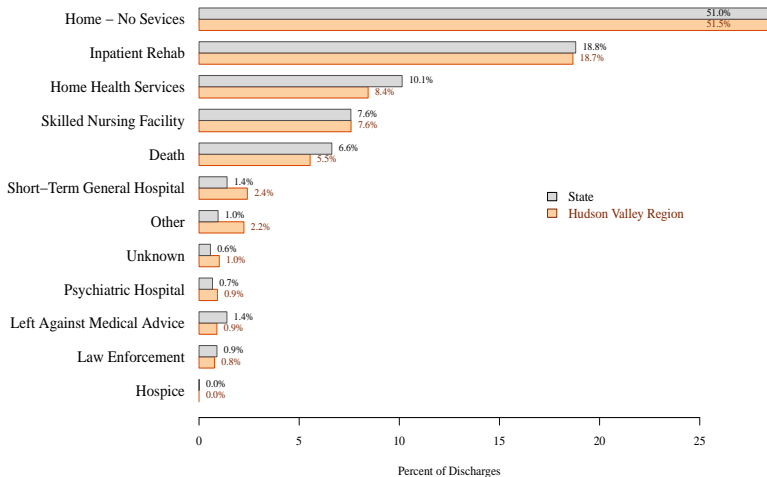


Quartile Plot of Time Until First Procedure by Injury Severity Score



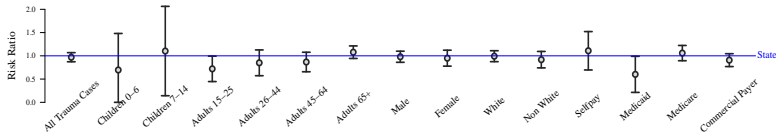
The quartile plot highlights the middle 50% of patients with the box. The center line denotes the median (the 50th percentile), 25% of patients therefore fall below the range of the box, and 25% fall above the range of the box.

Discharge Destination

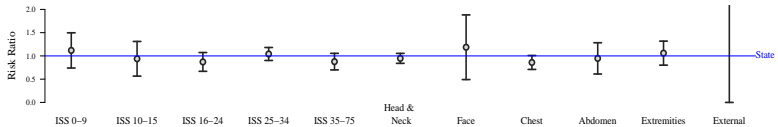


Note that axis margin cuts off full length of discharged to home bar.

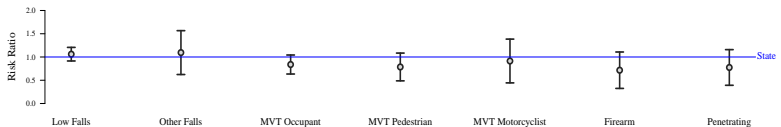
Risk by Patient Characteristics



Risk by Severity and Location of Injury



Risk by Type of Trauma



$$\text{Risk Ratio} = \frac{\text{observed fatality rate}}{\text{expected fatality rate}}$$

Expected rate is estimated using a multivariate logistic regression adjusting for risk factors: age, gender, injury severity, injury body region, injury type, Glasgow coma motor score, systolic blood pressure, mechanism of trauma, prehospital care, and existing comorbidities.

Hudson Valley Region Regional Risk Adjusted Fatality Rates

Categories	Hudson Valley Region Region (HVR)				Comparison*	
	N	Observed	Expected	Risk Ratio	State	HVR
Overall						
All Trauma Cases	6,447	5.5%	5.7%	1.0 ±0.1	6.6%	6.4%
Age						
Children 0-6	349	0.9%	1.2%	0.7 ±0.8	2.3%	1.6%
Children 7-14	327	1.5%	1.4%	1.1 ±1	2.1%	2.3%
Adults 15-25	1,095	2.4%	3.3%	0.7 ±0.3	4.7%	3.4%
Adults 26-44	1,162	3.0%	3.5%	0.8 ±0.3	4.6%	3.9%
Adults 45-64	1,555	4.1%	4.7%	0.9 ±0.2	5.5%	4.8%
Adults 65+	1,817	11.9%	11.1%	1.1 ±0.1	10.6%	11.5%
Gender						
Male	4,245	5.7%	5.9%	1.0 ±0.1	6.8%	6.6%
Female	2,202	5.1%	5.4%	0.9 ±0.2	6.2%	5.9%
Race						
White	4,663	5.5%	5.6%	1.0 ±0.1	6.9%	6.8%
Non White	1,784	5.5%	6.0%	0.9 ±0.2	5.9%	5.5%
Primary Payor						
Selfpay	402	6.5%	5.8%	1.1 ±0.4	10.0%	11.1%
Medicaid	320	2.8%	4.7%	0.6 ±0.4	4.0%	2.4%
Medicare	1,341	10.7%	10.1%	1.1 ±0.2	9.8%	10.4%
Commercial Payer	3,999	4.0%	4.4%	0.9 ±0.1	5.2%	4.7%

State comparison is risk adjusted. N values reflect data available for accurate risk adjustment (not regional totals). Risk ratio quotes a 95% confidence interval.



Hudson Valley Region Regional Risk Adjusted Fatality Rates

Categories	Hudson Valley Region Region (HVR)				Comparison*	
	N	Observed	Expected	Risk Ratio	State	HVR
Injury Severity Score (ISS)						
ISS 0-9	2,134	1.5%	1.4%	1.1 ±0.4	1.8%	2.0%
ISS 10-15	1,540	1.6%	1.7%	0.9 ±0.4	1.8%	1.7%
ISS 16-24	1,845	3.7%	4.3%	0.9 ±0.2	4.3%	3.8%
ISS 25-34	717	23.0%	22.1%	1.0 ±0.1	25.2%	26.3%
ISS 35-75	211	30.8%	35.1%	0.9 ±0.2	44.6%	39.1%
Location of Injury						
Head & Neck	2,940	9.3%	9.8%	0.9 ±0.1	10.5%	10.0%
Face	86	11.6%	9.8%	1.2 ±0.7	15.0%	17.8%
Chest	1,966	6.1%	7.0%	0.9 ±0.1	8.6%	7.4%
Abdomen	558	5.2%	5.5%	0.9 ±0.3	10.5%	10.0%
Extremities	1,412	4.4%	4.1%	1.1 ±0.3	5.7%	6.0%
External	6	33.3%	6.0%	5.5 ±6.8	33.6%	185.5%
Falls						
Low Falls	2,128	8.7%	8.2%	1.1 ±0.1	8.0%	8.5%
Other Falls	563	3.6%	3.2%	1.1 ±0.5	3.8%	4.2%
Motor Vehical Traffic (MVT)						
MVT Occupant	1,527	4.1%	4.8%	0.8 ±0.2	5.7%	4.8%
MVT Pedestrian	395	6.3%	8.1%	0.8 ±0.3	9.9%	7.8%
MVT Motorcyclist	387	3.6%	4.0%	0.9 ±0.5	5.2%	4.8%
Other						
Firearm	168	7.1%	10.0%	0.7 ±0.4	12.8%	9.2%
Penetrating	308	4.9%	6.3%	0.8 ±0.4	9.1%	7.1%

State comparison is risk adjusted. N values reflect data available for accurate risk adjustment (not regional totals). Risk ratio quotes a 95% confidence interval.



Characteristics of Injury Incidence

Deaths, Hospitalizations, and Emergency Department[†] (ED) Visits Hudson Valley Region Residents, 2010-2012

		Deaths		Hospitalizations		ED Visits	
		Mean Annual Frequency	Rate per 100,000 Residents	Mean Annual Frequency	Rate per 100,000 Residents	Mean Annual Frequency	Rate per 100,000 Residents
Total		840	36.5	18,048	1,419.1	175,476	7,621.6
Age Group	0<1	3	12.5**	89	648.7	1,537	5,744.6
	1-4	4	3.8**	283	488.9	12,081	10,653.9
	5-9	4	2.7**	230	308.4	11,203	7,426
	10-14	4	2.7**	308	384.4	15,447	9,741.8
	15-19	34	19.9	731	778.7	17,476	10,324.5
	20-24	71	48	845	892.1	15,373	10,334
	25-44	203	36.1	2,633	861.4	44,574	7,938.9
	45-64	264	40.5	4,118	1,137.7	37,560	5,762.7
	65+	252	78.5	8,812	4,658	20,223	6,290.8
	Gender	Male	573	50.6	8,567	1,386.7	92,871
	Female	267	22.8	9,481	1,469.8	82,600	7,061
	Unknown	n/a	n/a	n/a	n/a	5	n/a
Percent Traumatic Brain Injury		30%		13%		8%	
Mean Charge per Hospitalization or ED Visit		n/a		\$46,812		\$1,797	
Mean One Year Total Hospitalization or ED Visit Charges		n/a		\$844,879,044		\$315,404,644	
Three Year Total Hospitalization or ED Visit Charges		n/a		\$2,534,637,132		\$946,213,933	
Average Length of Hospital Stay (Days)		n/a		6		n/a	

[†]The incidence of ED visits does not include patients who were subsequently admitted into the hospital
Rate = Frequency / Population * 100,000

*Data based on frequencies less than six not reported

**Caution: Rates calculated using frequencies of less than 20 are unstable

Source: NYSDOH, Bureau of Occupational Health and Injury Prevention
www.health.ny.gov/prevention/injury_prevention/
SPARCS December 2013
Vital Statistics Death File February 2014



Emergency Department (ED)† Visits Due to Injury
 Leading Causes by Age Group
 Hudson Valley Trauma Region, New York State Residents, 2010-2012

Rank	Age Group									
	0<1	1-4	5-9	10-14	15-19	20-24	25-44	45-64	65+	Total
1	Fall 821 (53%)	Fall 5,169 (43%)	Fall 3,989 (36%)	Struck By, Against 4,152 (27%)	Struck By, Against 3,833 (22%)	Fall 2,272 (15%)	Fall 7,890 (18%)	Fall 10,540 (28%)	Fall 11,306 (56%)	Fall 49,032 (28%)
2	Struck By, Against 140 (9%)	Struck By, Against 1,997 (17%)	Struck By, Against 2,517 (22%)	Fall 4,143 (27%)	Fall 2,903 (17%)	Struck By, Against 2,043 (13%)	Overexertion 5,486 (12%)	Cut / Pierce 3,882 (10%)	Unspecified 1,347 (7%)	Struck By, Against 25,191 (14%)
3	Unspecified 100 (6%)	Natural / Environmental 789 (7%)	Natural / Environmental 764 (7%)	Overexertion 1,813 (12%)	Overexertion 2,105 (12%)	MVT*, Occupant 2,015 (13%)	Struck By, Against 5,409 (12%)	Overexertion 3,818 (10%)	Struck By, Against 1,327 (7%)	Overexertion 16,824 (10%)
4	MVT*, Occupant 61 (4%)	Unspecified 574 (5%)	Cut / Pierce 667 (6%)	Cut / Pierce 853 (6%)	MVT*, Occupant 1,755 (10%)	Overexertion 1,627 (11%)	MVT*, Occupant 5,073 (11%)	Struck By, Against 3,773 (10%)	Cut / Pierce 1,123 (6%)	Cut / Pierce 14,832 (8%)
5	Natural / Environmental 49 (3%)	Cut / Pierce 496 (4%)	Overexertion 543 (5%)	Unspecified 682 (4%)	Assault 1,255 (7%)	Cut / Pierce 1,592 (10%)	Cut / Pierce 4,951 (11%)	MVT*, Occupant 3,564 (9%)	MVT*, Occupant 1,113 (6%)	MVT*, Occupant 14,656 (8%)
6	Poisoning 41 (3%)	Overexertion 462 (4%)	Unspecified 442 (4%)	Environmental 522 (3%)	Cut / Pierce 1,228 (7%)	Assault 1,385 (9%)	Unspecified 3,315 (7%)	Unspecified 2,806 (7%)	Overexertion 944 (5%)	Unspecified 11,159 (6%)
7	Cut / Pierce 39 (3%)	Poisoning 346 (3%)	MVT*, Occupant 387 (3%)	MVT*, Occupant 448 (3%)	Unspecified 900 (5%)	Unspecified 983 (6%)	Assault 2,683 (6%)	Natural / Environmental 2,142 (6%)	Natural / Environmental 888 (4%)	Natural / Environmental 8,515 (5%)
8	Hot Object / Scald 39 (3%)	MVT*, Occupant 239 (2%)	Pedal Cyclist, Non-Traffic 331 (3%)	Pedal Cyclist, Non-Traffic 410 (3%)	Natural / Environmental 588 (3%)	Natural / Environmental 708 (5%)	Natural / Environmental 2,065 (5%)	Assault 1,055 (3%)	Poisoning 174 (1%)	Assault 6,992 (4%)
9	Overexertion 27 (2%)	Hot Object / Scald 202 (2%)	Poisoning 97 (1%)	Assault 406 (3%)	Self-inflicted 279 (2%)	Poisoning 168 (1%)	Poisoning 461 (1%)	Poisoning 394 (1%)	Hot Object / Scald 106 (1%)	Poisoning 1,946 (1%)
10	Suffocation 18 (1%)	Pedal Cyclist, Non-Traffic 94 (1%)	Hot Object / Scald 77 (1%)	Transport, Non-Traffic 149 (1%)	Pedal Cyclist, Non-Traffic 205 (1%)	Self-inflicted 168 (1%)	Hot Object / Scald 454 (1%)	Hot Object / Scald 348 (1%)	Assault 99 (0%)	Pedal Cyclist, Non-Traffic 1,674 (1%)

Yearly Average (percent of age group)

MVT* = Motor Vehicle Traffic

*Data based on three year total frequencies of less than six are not reportable

Intentional Injury
Unintentional Injury

Source: NYSDOH, Bureau of Occupational Health and Injury Prevention

www.health.ny.gov/injury/

STATISTICAL CENTER

NEW YORK STATE DEPARTMENT OF HEALTH

STATISTICS CENTER

Department of Health

Hospitalizations Due to Injury Leading Causes by Age Group

Hudson Valley Trauma Region, New York State Residents, 2010-2012

Rank	Age Group									
	0<1	1-4	5-9	10-14	15-19	20-24	25-44	45-64	65+	Total
1	Fall 36 (40%)	Fall 90 (32%)	Fall 96 (42%)	Fall 101 (33%)	Self-inflicted 171 (23%)	Self-inflicted 169 (20%)	Fall 511 (19%)	Fall 1,606 (39%)	Fall 6,531 (74%)	Fall 9,153 (51%)
2	Hot Object / Scald 10 (12%)	Hot Object / Scald 41 (14%)	Natural / Environmental 17 (7%)	Self-inflicted 35 (11%)	MVT ^a , Occupant 107 (15%)	Assault 123 (15%)	Self-inflicted 424 (16%)	Self-inflicted 335 (8%)	Unspecified 671 (8%)	Self-inflicted 1,212 (7%)
3	Unspecified 8 (9%)	Poisoning 40 (14%)	Struck By, Against 17 (7%)	Struck By, Against 31 (10%)	Fall 91 (12%)	MVT ^a , Occupant 120 (14%)	MVT ^a , Occupant 261 (10%)	Unspecified 325 (8%)	MVT ^a , Occupant 238 (3%)	Unspecified 1,190 (7%)
4	Suffocation 5 (6%)	Struck By, Against 15 (5%)	MVT ^a , Pedestrian 16 (7%)	Pedal Cyclist, Non-Traffic 21 (7%)	Assault 74 (10%)	Fall 93 (11%)	Assault 239 (9%)	Poisoning 281 (7%)	Poisoning 196 (2%)	MVT ^a , Occupant 1,011 (6%)
5	Assault 4 (5%)	Natural / Environmental 15 (5%)	Pedal Cyclist, Non-Traffic 8 (3%)	MVT ^a , Pedestrian 12 (4%)	Struck By, Against 57 (8%)	Poisoning 60 (7%)	Poisoning 190 (7%)	MVT ^a , Occupant 266 (6%)	Natural / Environmental 144 (2%)	Poisoning 826 (5%)
6	Poisoning 4 (4%)	MVT ^a , Pedestrian 9 (3%)	MVT ^a , Occupant 8 (3%)	Unspecified 12 (4%)	Poisoning 40 (5%)	MVT ^a , Motorcyclist 34 (4%)	Unspecified 124 (5%)	Natural / Environmental 163 (4%)	Struck By, Against 110 (1%)	Assault 573 (3%)
7	Natural / Environmental 3 (3%)	Suffocation 6 (2%)	Poisoning 7 (3%)	Assault 11 (4%)	Transport, Non-Traffic 22 (3%)	Struck By, Against 27 (3%)	Environmental 94 (4%)	Struck By, Against 104 (3%)	Self-inflicted 76 (1%)	Struck By, Against 452 (3%)
8	*	MVT ^a , Occupant 5 (2%)	Unspecified 6 (3%)	Poisoning 9 (3%)	Unspecified 18 (2%)	Natural / Environmental 22 (3%)	Struck By, Against 91 (3%)	Assault 92 (2%)	Suffocation 75 (1%)	MVT ^a , Pedestrian 244 (1%)
9	*	Unspecified 5 (2%)	Hot Object / Scald 6 (2%)	Natural / Environmental 9 (3%)	Natural / Environmental 16 (2%)	Cut / Pierce 21 (2%)	MVT ^a , Motorcyclist 86 (3%)	MVT ^a , Motorcyclist 77 (2%)	Overexertion 69 (1%)	Cut / Pierce 232 (1%)
10	*	Assault 5 (2%)	Transport, Non-Traffic 5 (2%)	Transport, Non-Traffic 8 (2%)	MVT ^a , Pedestrian 16 (2%)	Unspecified 20 (2%)	Cut / Pierce 77 (3%)	Cut / Pierce 75 (2%)	MVT ^a , Pedestrian 48 (1%)	MVT ^a , Motorcyclist 215 (1%)

Yearly Average (percent of age group)

MVT^a = Motor Vehicle Traffic

*Data based on three year total frequencies of less than six are not reportable

	Intentional Injury
	Unintentional Injury

Source: NYSDOH, Bureau of Occupational Health and Injury Prevention

www.health.ny.gov/injury/

STATISTICS DEPARTMENT

STATISTICS DEPARTMENT

STATISTICS DEPARTMENT

STATISTICS DEPARTMENT

STATISTICS DEPARTMENT

STATISTICS DEPARTMENT

Injury Related Deaths
Leading Causes by Age Group
Hudson Valley Region, New York State Residents, 2010-2012

Rank	Age Group									
	0<1	1-4	5-9	10-14	15-19	20-24	25-44	45-64	65+	Total
1	*	*	*	*	Suicide 8 (25%)	Poisoning 19 (26%)	Poisoning 66 (33%)	Suicide 82 (31%)	Fall 96 (38%)	Suicide 184 (22%)
2	*	*	*	*	MVT ^a , Occupant 6 (17%)	Suicide 14 (19%)	Suicide 48 (24%)	Poisoning 80 (30%)	Unspecified 36 (14%)	Poisoning 178 (21%)
3	*	*	*	*	MVT ^a , Unspecified 5 (14%)	Homicide 9 (13%)	Homicide 18 (9%)	Fall 20 (8%)	Suicide 30 (12%)	Fall 122 (14%)
4	*	*	*	*	Homicide 4 (12%)	MVT ^a , Occupant 8 (12%)	MVT ^a , Occupant 12 (6%)	MVT ^a , Unspecified 12 (4%)	Suffocation 18 (7%)	Unspecified 47 (6%)
5	*	*	*	*	Poisoning 3 (10%)	MVT ^a , Unspecified 6 (8%)	MVT ^a , Motorcyclist 11 (5%)	Homicide 9 (3%)	MVT ^a , Occupant 13 (5%)	Homicide 47 (6%)
6		*	*	*	*	MVT ^a , Motorcyclist 4 (5%)	MVT ^a , Unspecified 7 (4%)	Unspecified 7 (3%)	MVT ^a , Unspecified 12 (5%)	MVT ^a , Occupant 45 (5%)
7			*	*	*	MVT ^a , Pedestrian 2 (3%)	Fall 4 (2%)	Natural / Environmental 4 (2%)	Poisoning 10 (4%)	MVT ^a , Unspecified 43 (5%)
8					*	*	Transport, Non- Traffic 4 (2%)	MVT ^a , Occupant 6 (2%)	MVT ^a , Pedestrian 7 (3%)	Suffocation 24 (3%)
9					*	*	MVT ^a , Pedestrian 3 (2%)	MVT ^a , Pedestrian 6 (2%)	Fire / Flame 7 (3%)	MVT ^a , Motorcyclist 21 (3%)
10					*	*	Unspecified 2 (1%)	MVT ^a , Motorcyclist 5 (2%)	Natural / Environmental 4 (2%)	MVT ^a , Pedestrian 20 (2%)
Yearly Average (percent of age group)										

MVT^a = Motor Vehicle Traffic

*Data based on three year total frequencies of less than six are not reportable

	Intentional Injury
	Unintentional Injury

Source: NYSDOH, Bureau of Occupational Health and Injury Prevention

www.health.ny.gov/injury/

Department
of Health