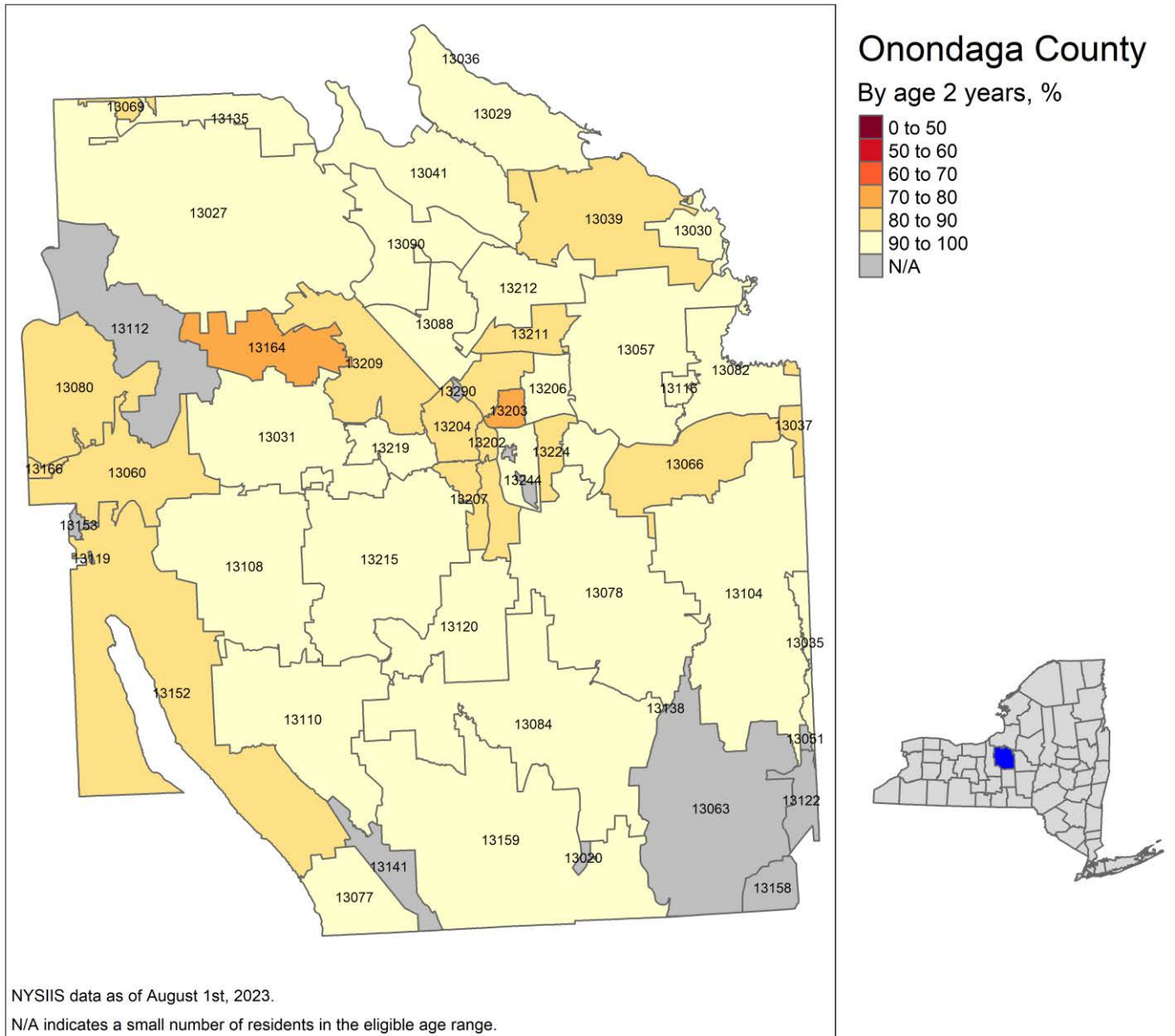


Polio Vaccination Rates by Zip Code: Onondaga County

This report is based on data as of August 1, 2023 from the New York State Immunization Information System (NYSIIS). The rates below are calculated based on data of children that have received 3 polio immunizations by 2 years of age, reported their residency as the State of New York, provided their New York State county of residence, and have at least one immunization or have a New York State birth record outside of New York City.

- As of January 8, 2008, all health care providers in New York State, outside of New York City, are required to report all immunizations administered to people less than 19 years of age, along with the person's immunization histories, to NYSDOH using NYSIIS.
- Calculated rates are based on where the individual resides, based on the most recent resident information reported through NYSIIS.
- ZIP codes that straddle more than one county are included in each county's map and table based on the [open data page here](#) and in consultation with local county health departments. The rate for the entire ZIP code is shown. The county overall rate includes only those children who report the given county of residence. This can lead to some discrepancies between the ZIP code rates and the county rates in the table below.
- Data are not included for ZIP codes where there are less than 20 residents in the eligible age range.
- Some entities that are not under the regulatory authority of the State of New York (e.g., federal entities such as federal military reservations, first nations, and jurisdictions outside of New York State), may not report this data to New York State, and would therefore not have their data included in NYSDOH rates.
- The New York City Department of Health and Mental Hygiene (NYCDOHMH) maintains non-COVID-19 immunization records for New York City residents through the Citywide Immunization Registry (CIR).

Figure 1: Onondaga County Polio Vaccination Rates by Zip Code



*Some ZIP codes' labels may be in a different place than they would appear on a geographic map or not be visible due to formatting limitations with the software used to generate the NYSDOH polio vaccination rate ZIP code map. If you do not see a ZIP code label on the map, please refer to Table 1 for the corresponding polio vaccination rate for each ZIP code available or the data description for more information about the data source.

Table 1: Onondaga County Polio Vaccination Rates by Zip Code

| ZIP Code | Polio Vaccination Rate |
|------------------------------|------------------------|
| Onondaga County overall rate | 89.8% |
| 13027 | 92.5% |
| 13029 | 94.7% |
| 13030 | 100.0% |
| 13031 | 91.8% |
| 13035 | 90.2% |
| 13036 | 93.1% |
| 13037 | 88.5% |
| 13039 | 88.6% |
| 13041 | 94.7% |
| 13057 | 94.7% |
| 13060 | 80.8% |
| 13066 | 89.5% |
| 13069 | 89.8% |
| 13077 | 92.3% |
| 13078 | 96.7% |
| 13080 | 82.4% |
| 13082 | 91.1% |
| 13084 | 94.9% |
| 13088 | 95.6% |
| 13090 | 92.3% |
| 13104 | 90.3% |
| 13108 | 92.9% |
| 13110 | 100.0% |
| 13116 | 95.7% |
| 13120 | 92.3% |
| 13135 | 92.9% |
| 13152 | 83.8% |
| 13159 | 93.5% |
| 13164 | 78.4% |
| 13166 | 87.7% |
| 13202 | 84.8% |
| 13203 | 75.1% |
| 13204 | 88.3% |
| 13205 | 88.0% |
| 13206 | 92.2% |
| 13207 | 86.3% |
| 13208 | 85.6% |
| 13209 | 89.0% |
| 13210 | 90.9% |

| ZIP Code | Polio Vaccination Rate |
|----------|------------------------|
| 13211 | 85.7% |
| 13212 | 95.0% |
| 13214 | 96.2% |
| 13215 | 95.4% |
| 13219 | 90.1% |
| 13224 | 85.3% |
| 13020 | * |
| 13051 | * |
| 13063 | * |
| 13112 | * |
| 13119 | * |
| 13122 | * |
| 13138 | * |
| 13141 | * |
| 13153 | * |
| 13158 | * |
| 13244 | * |
| 13290 | * |

*Not shown, due to a small number (<20) of residents in the eligible age range.