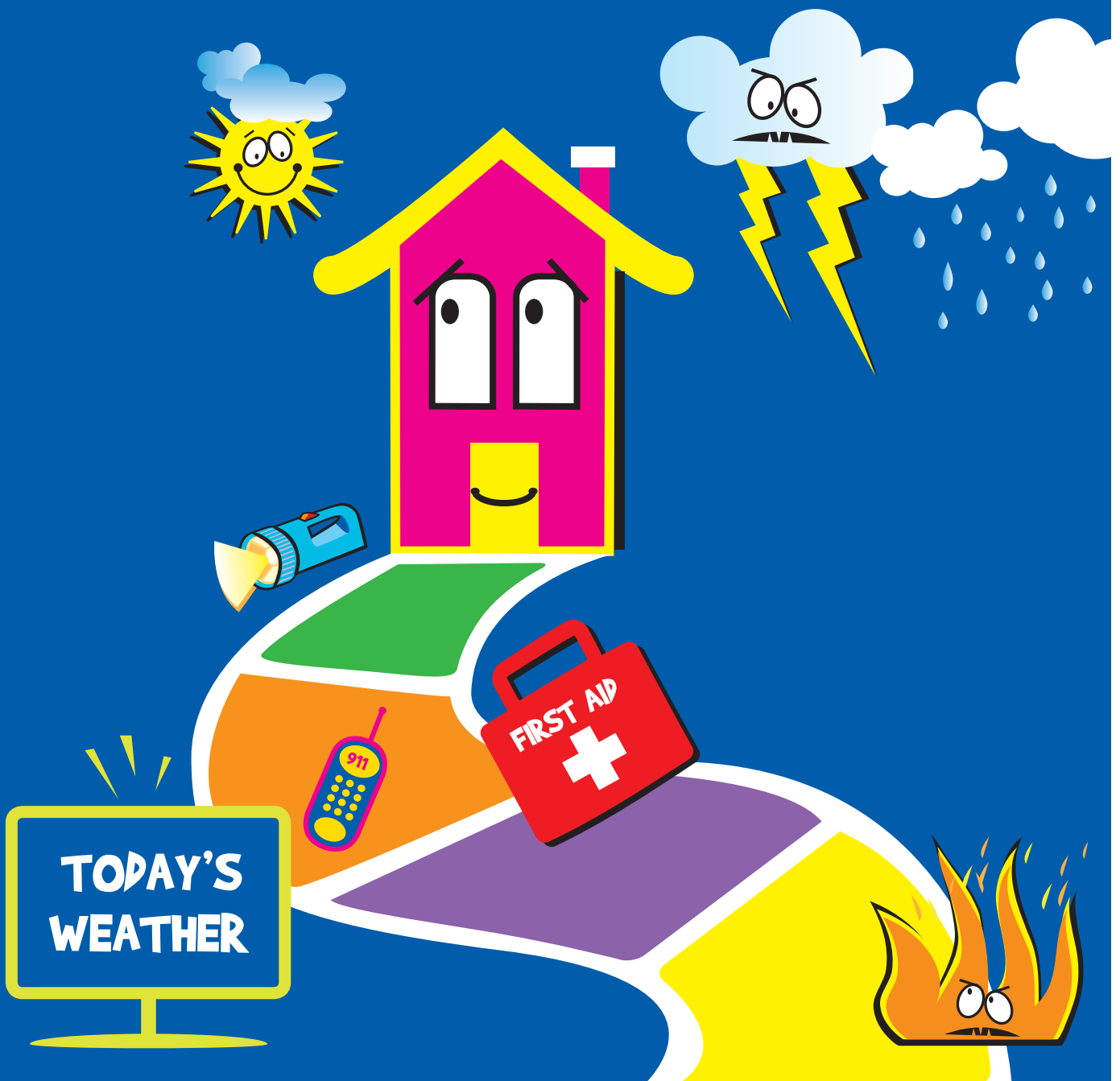


Welcome to READYVILLE

WHERE YOU CAN LEARN ABOUT GETTING READY FOR EMERGENCIES!



READY TO GO?

THINGS YOU SHOULD KNOW.

AN EMERGENCY is something that you do not expect. It is a time when someone could be in danger or could be hurt. It is time to get help right away!

A FAMILY EMERGENCY PLAN lists the things to have and to do in an emergency:

- **AN EMERGENCY PHONE LIST** has the important phone numbers that you and your family will call in an emergency.
- **AN EMERGENCY KIT** starts with a to-go bag. It has things like a flashlight, canned or dried food, bottled water, whistles, maps, and money. You will need them when the power goes off or if you have to leave your home quickly.
- **A FIRST AID KIT** should have bandages, scissors, medicine for cuts and scrapes, and a thermometer. It can help someone who is sick or hurt.



IMPORTANT NEWS!
**LEARN ABOUT THE
EMERGENCY ON THE TV,
RADIO, AND THE INTERNET.**

WORD SEARCH

WHAT TO PACK IN YOUR TO-GO BAG   **USE AN OLD BACKPACK!**

Use the word bank and circle the hidden words. The words go up, down, and in all different directions. **The correct answers are on the back page.**

BOOKS
MAP
FIRST AID KIT
RADIO
WHISTLE
BLANKETS
MEDICINE
FLASHLIGHT
WATER

M E D I C I N E O R F
B L W T R R D H M I H
R Z T H Q F Q E R Q V
S T H G I L H S A L F
K T F P R S T D W B P
P F E A I A T R O O H
A T D K I W R L T O G
M I X D N J S R E K F
O E K Y W A U L X S A
G I G B D M L I S O E
T R E T A W D B X V Q

THE READYVILLE

THERE IS AN EMERGENCY IN READYVILLE. YOU MUST LEAVE HOME AND GET TO SAFETY AS FAST AS YOU CAN. **READY, SET, GO!**

INSTRUCTIONS: YOU CAN USE A COIN OR ANOTHER OBJECT AS YOUR PLAYING PIECE. MAKE SURE TO HAVE AN EXTRA COIN TO TOSS WITH. THE YOUNGEST PLAYER GOES FIRST. THE NEXT YOUNGEST PLAYER GOES SECOND, AND SO ON.

TO PLAY: TOSS A COIN!



TAILS:
MOVE AHEAD 1

HEADS:
MOVE AHEAD 2



CALL YOUR PHONE LIST. LET FAMILY KNOW YOU ARE OK. MOVE 2.

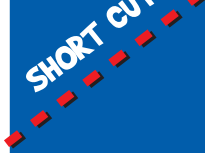
YOUR FAMILY EMERGENCY KIT IS ALREADY PACKED. MOVE 4 SPACES.



CHECK THE WEATHER FORECAST. MOVE 2.



FORGOT YOUR FLASHLIGHT. GO BACK 2.



FOLLOW ARROW TO PETOUR!



DRINK BOTTLED WATER. MOVE 3.

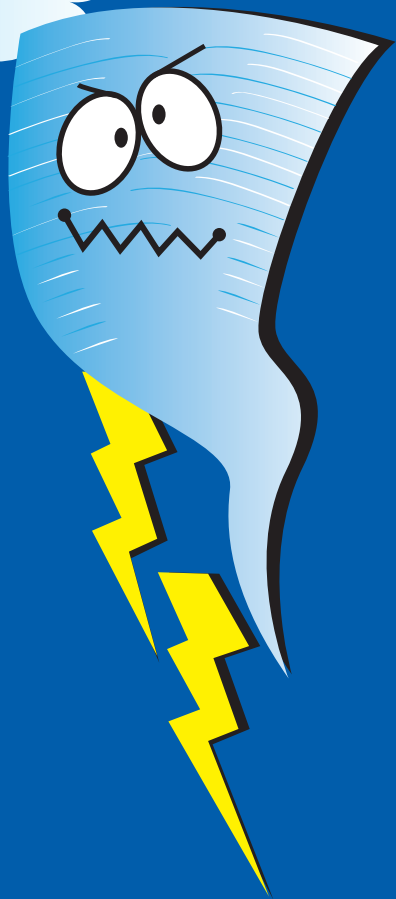
YOU KNOW YOUR ADDRESS. MOVE 4.




CONTINUE ON NEXT PAGE

SHORT CUT!

GAME



CHECK NEWS ON YOUR PHONE OR RADIO. MOVE 4.		
		YOUR FAMILY IS SAFE TOGETHER. MOVE 1.
	GO BACK!	
FORGOT BANDAGES IN THE FIRST AID KIT! GO BACK 3.		FLOODED ROAD FOLLOW ARROW GO BACK!



ARRIVED SAFELY!



EMERGENCY TRUE/FALSE

PUT A  NEXT TO WORDS AND SENTENCES THAT ARE TRUE.

ANSWERS ON THE BOTTOM!

THESE ARE KINDS OF EMERGENCIES.

- _____ Hurricanes
- _____ Floods
- _____ Missing your favorite TV show

A FAMILY EMERGENCY PLAN HAS

- _____ What your family will do in an emergency.
- _____ A family emergency phone list.
- _____ A bunch of rotten tomatoes.

THINGS YOUR FAMILY CAN DO TO BE READY FOR EMERGENCIES.

- _____ Talk to each other about emergencies.
- _____ Argue over who gets the biggest cookie.
- _____ Put together an emergency supplies kit.

HOW CAN YOUR FAMILY GET NEWS DURING AN EMERGENCY?

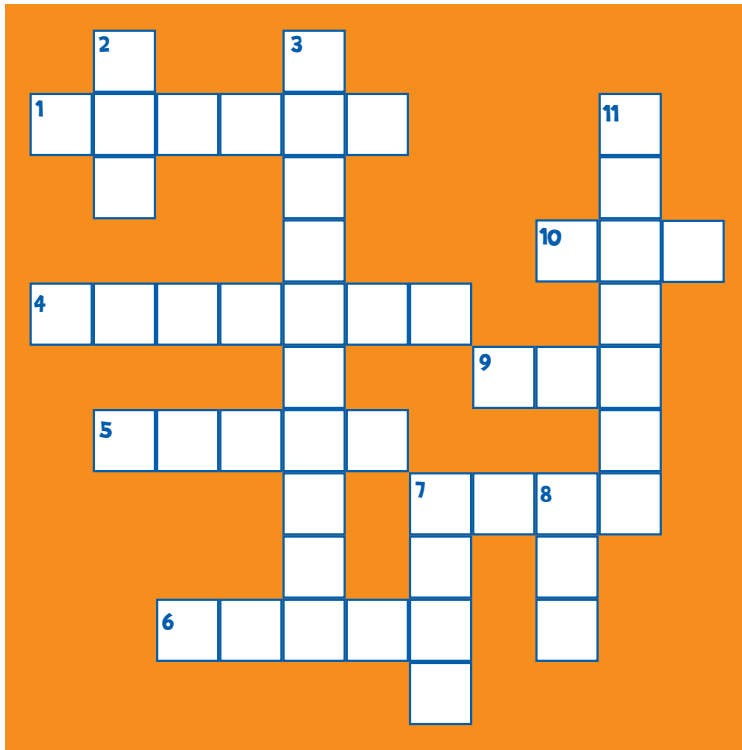
- _____ Listen to the TV and radio.
- _____ Throw snowballs at each other.
- _____ Keep in touch with family, friends, and neighbors.

ANSWERS TO TRUE/FALSE:

Your favorite TV show, rotten tomatoes, the biggest cookie, and throwing snowballs might make you want to draw a smiley face, but not on this page!

READYVILLE CROSSWORD PUZZLE

USING WHAT YOU HAVE LEARNED ABOUT EMERGENCIES, YOU SHOULD BE READY!
ANSWERS ON THE BOTTOM!



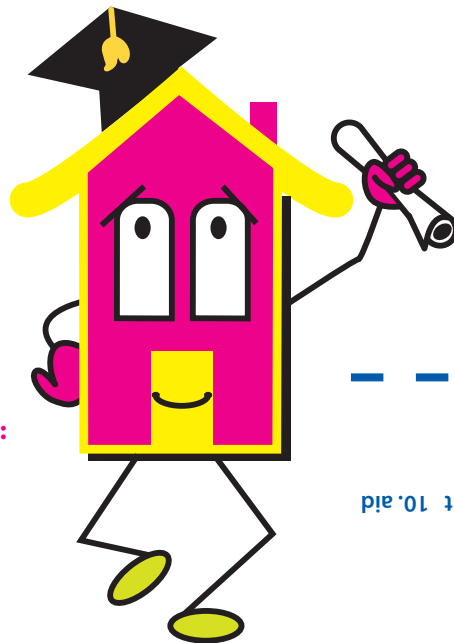
CLUES ACROSS

- It is good to have a _____ emergency plan.
- A _____ forecast lets you know if it will rain or be sunny.
- You can hear news (and music!) on a _____.
- Bottled _____ is important to have.
- During an emergency you might have to leave your _____ quickly.
- Canned or dried food can be in an emergency _____.
- A first _____ kit should have medicine in case someone gets sick.

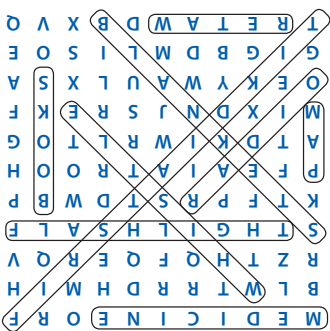
CLUES DOWN

- An old backpack would make a good to-go _____.
- If the lights go out, make sure you have one. _____.
- Bandages help if someone gets _____.
- One of these will help if you need directions. _____.
- A referee uses this during a game and it can help to find someone in an emergency. _____.

ARE YOU
READY?



ANSWERS TO WORD SEARCH:



ANSWERS TO CROSSWORD PUZZLE:

Across: 1. family 4. weather 5. radio 6. water 7. home 9. kit 10. aid
Down: 2. bag 3. flashlight 7. hurt 8. map 11. whistle



Department
of Health

Follow us on:
health.ny.gov
facebook.com/NYSDOH
twitter.com/HealthNYGov
youtube.com/NYSDOH