

# Central New York

Trauma Registry Regional Progress Report 2010-2013

New York State Department of Health

Office of Primary Care and Health Systems Management

May, 2016

Table of Contents

Executive Summary

Patient Information

- Summary Statistics
- Mechanism of Injury

Emergency Medical Services

- Response Times
- Transport Times
- Initial Destination

Referring Hospital Statistics

- Time at Referring Hospital

Trauma Center Statistics

- Length of Stay
- Complications
- Initial Wait Time
- Discharge Disposition

Performance Benchmarks

- Risk Ratios
- Risk Adjusted Fatality Rates

Injury Statistics

- Characteristics of Injury Incidence
- Emergency Department Visits
- Hospitalizations
- Deaths

## Executive Summary

### Introduction

The purpose of this report is to present summary statistics of trauma-related injuries and outcomes of the care provided in each of the eight trauma regions in the State. For the years 2010-2013 there were a total of 40 trauma centers designated in New York State. Trauma clinicians, administrators and policy makers may use this report to identify important areas and issues for enhancing systems development and clinical quality improvement in their regions. The public may use this report to learn more about the trauma system in their region. As trauma centers in New York State transition to the standards of the American College of Surgeons Committee on Trauma, and additional levels of trauma center are added to the State system, this report will serve as a baseline for measuring improvements in outcome and injury prevention in each region.

### Data Sources

The New York State Trauma Registry serves as the data source. Trauma patients identified as residents of the Central New York Region were included.

### Acknowledgement

The State Health Department would like to thank: the New York Trauma Center program staff and the Bureau of Emergency Medical Services and Trauma Systems program manager of the Office of Primary Care and Health Systems Management who have worked diligently to provide the data utilized in this report, the NYSDOH Bureau of Occupational Health and Injury Prevention for the injury statistics, and the Data Management, Analysis and Research Group who created the trauma registry and performed the statistical analyses to generate the tables and figures presented in this report.

### Data Summary

This report summarizes the trauma cases for residents of the Central New York Region for the discharge years 2010-2013, who were included in the New York State Trauma Registry. There were a total of 6,599 trauma cases amongst the residents of the Central New York Region. The key findings include the following:

- ▶ Annually, there were an average of 1,650 trauma incidents with a 8.73% case fatality rate.
- ▶ The median EMS response time was 8 minutes.
- ▶ The median transport time to an appropriate trauma center was 20 minutes, for adults, and 21 minutes, for children under 15 years of age.
- ▶ 35% of pediatric trauma patients were transported to an appropriately designated center.
- ▶ The median time at a referring hospital prior to transport to a trauma center for patients with an injury severity score of  $\geq 25$  was 3 hours.
- ▶ The median length of stay for surviving patients with an injury severity score of  $\geq 25$  was 9.7 days.
- ▶ The median time in the emergency department for patients with an injury severity score of  $\geq 25$  was 2.8 hours.
- ▶ The risk ratio,  $\frac{\text{observed fatality rate}}{\text{expected fatality rate}}$ , for all trauma from the Central New York Region was 1.17. (State average is 1)



### Central New York (CNY) Incident Summary (with comparison to state)

Categories	Central New York		Incidence*		Case Fatality Rate**	
	Incidents	Fatalities	CNY	State	CNY	State
<b>Year</b>						
2010	1,635	128	9.34	9.05	7.83	6.39
2011	1,718	149	9.81	8.73	8.67	6.79
2012	1,656	148	9.46	8.59	8.94	6.77
2013	1,590	151	9.10	8.16	9.50	6.58
<b>Age</b>						
0-5	333	17	6.92	5.38	5.11	2.14
6-13	266	8	3.94	3.06	3.01	1.73
14-34	1,795	119	8.71	8.06	6.63	4.96
35-64	2,225	150	8.14	7.17	6.74	5.28
65+	1,980	282	20.43	21.13	14.24	10.63
<b>Sex</b>						
Male	4,326	382	12.50	11.72	8.83	6.80
Female	2,273	194	6.42	5.72	8.53	6.31
<b>ISS</b>						
0-9	2,221	79	3.17	3.07	3.56	1.77
10-15	1,429	57	2.04	1.83	3.99	1.86
16-24	1,743	101	2.49	2.23	5.79	4.44
25-34	817	185	1.17	0.89	22.64	25.31
35-75	322	149	0.46	0.31	46.27	45.37
NA	67	5	0.10	0.29	7.46	6.73
<b>Four Year Total</b>						
All Trauma	6,599	576	9.43	8.63	8.73	6.63

\* Incidents per 10,000 residents

\*\* Case Fatality Rate as a percent



## Central New York (CNY) Regional Incident Classification (with comparison to state)

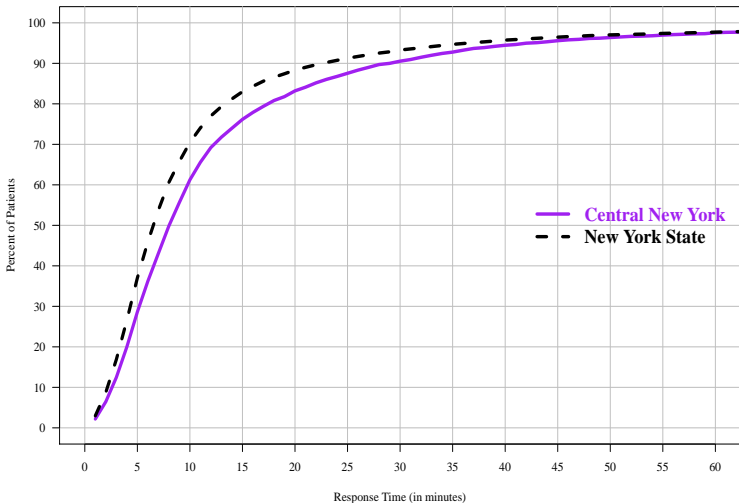
Category	Central New York		Incidence*		Case Fatality Rate**	
	Incidents	Fatalities	CNY	State	CNY	State
<b>Selected Mechanism of Injury</b>						
Fall	2,597	240	3.71	3.67	9.24	7.33
Motor Vehicle Traffic	2,058	189	2.94	2.47	9.18	6.67
Transport, non traffic	442	7	0.63	0.28	1.58	3.16
Struck by, against	352	14	0.50	0.55	3.98	2.07
Firearm	206	51	0.29	0.38	24.76	14.02
Unspecified	112	22	0.16	0.13	19.64	7.05
Other Specified and Classifiable	53	9	0.08	0.06	16.98	9.21
<b>Intention of Injury</b>						
Unintentional	5,612	476	8.02	6.99	8.48	6.60
Assault	459	39	0.66	1.02	8.50	5.87
Undetermined/Other	450	46	0.64	0.54	10.22	6.45
Self-Inflicted	78	21	0.11	0.08	26.92	19.88
<b>Type of Injury</b>						
Blunt	5,638	455	8.06	7.18	8.07	6.41
Other	695	69	0.99	0.82	9.93	6.15
Penetrating	266	52	0.38	0.63	19.55	9.79
<b>Four Year Total</b>						
All Trauma	6,599	576	9.43	8.63	8.73	6.63

\* Incidents per 10,000 residents

\*\* Case Fatality Rate as a percent



## Emergency Medical Service Response Time\*

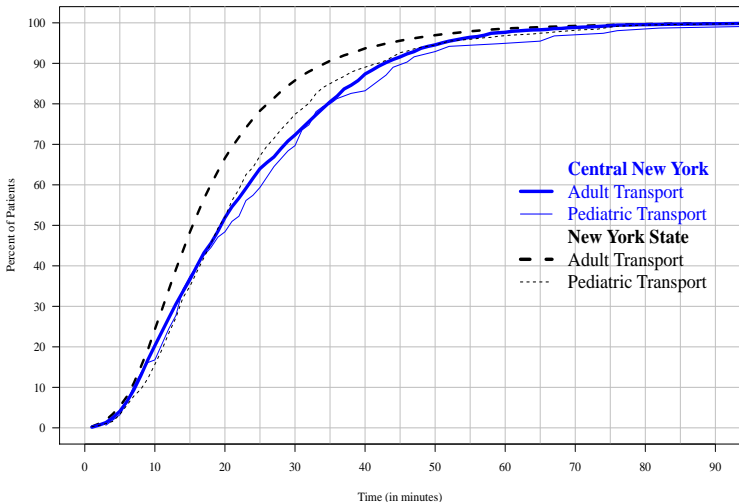


This plot shows the percent of incidents responded to by EMS within a given time period.

\*Response time is calculated as the time from emergency phone call to medical service's arrival at scene.



## Emergency Medical Service Transport Time\* to Patient Appropriate Trauma Center\*\*



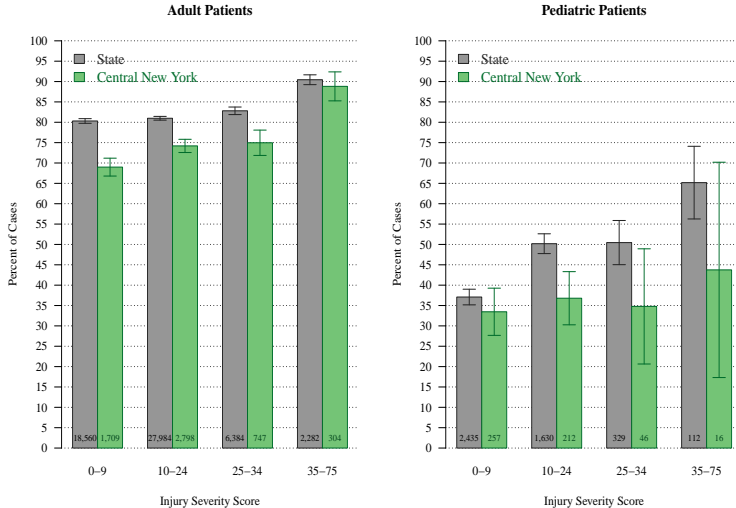
This plot shows the percent of trauma patients transported to an appropriate center within a given time period.

\*Transport time is calculated as time from emergency medical service's departure from the scene of injury to arrival at hospital.

\*\*Patient appropriate trauma center means either pediatric or dual designated for patients under 15 and either adult or dual designation for patients over 15 years of age.



Patients Transported by EMS to an Appropriate Trauma Center by Designation and Injury Severity Score

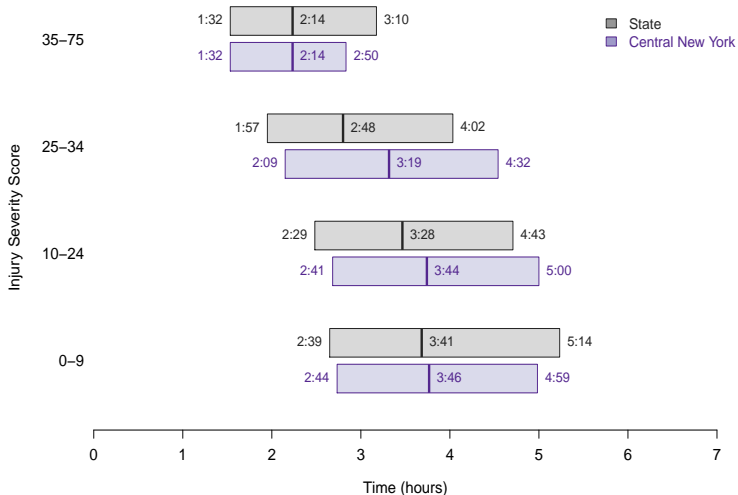


Registry data only includes data from patients that made it to a Trauma Center. Walk-ins excluded. 95% confidence intervals are shown around means.

Appropriate trauma center means either pediatric or dual designated for patients under 15 and either adult or dual designated for patients over 15 years of age.



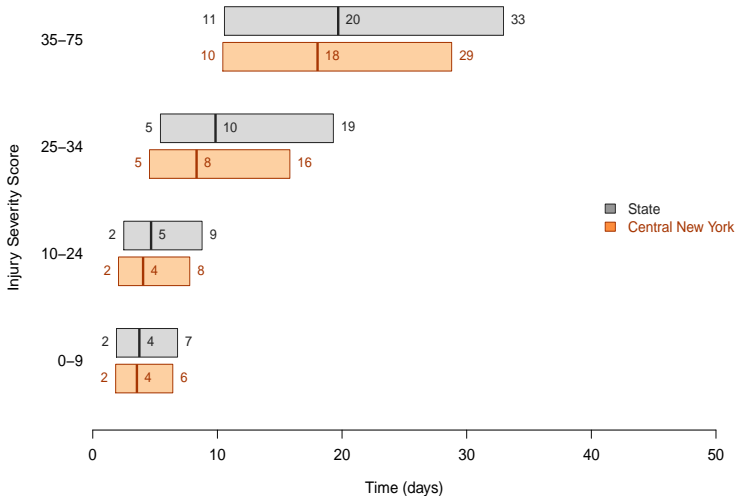
### Quartile Plot of Time at Referring Hospital by Injury Severity Score (for patients who were referred to a trauma center)



The quartile plot highlights the middle 50% of patients with the box. The center line denotes the median (the 50<sup>th</sup> percentile), 25% of patients therefore fall below the range of the box, and 25% fall above the range of the box.



### Quartile Plot of Length of Stay by Injury Severity Score (for patients who lived)

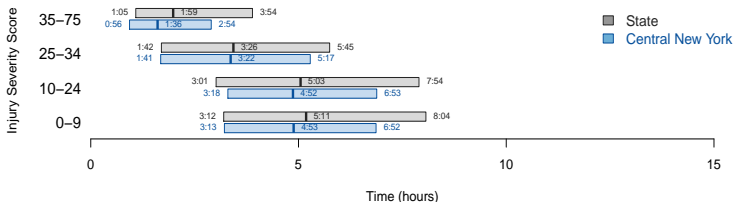


The quartile plot highlights the middle 50% of patients with the box. The center line denotes the median (the 50<sup>th</sup> percentile), 25% of patients therefore fall below the range of the box, and 25% fall above the range of the box.

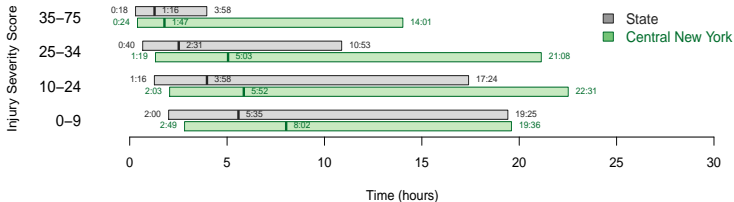
## Central New York (CNY) Complication Incidence and Mortality

Complications	Central New York		Frequency (%)		Fatality Rate (%)	
	Incidents	Fatalities	CNY	State	CNY	State
pneumonia	163	29	2.47	2.71	17.8	16.5
new urinary tract infection	119	11	1.80	1.96	9.2	8.2
acute lung injury	100	22	1.52	2.25	22.0	24.0
cardiac arrest in hospital	86	71	1.30	0.88	82.6	82.7
other unspecified	61	12	0.92	4.31	19.7	18.4
acute kidney injury	41	13	0.62	0.89	31.7	28.1
new decubitus ulcer	37	5	0.56	0.69	13.5	13.4
withdrawal from alcohol or drugs	36	1	0.55	0.94	2.8	2.8
severe sepsis	33	15	0.50	0.93	45.5	33.3
deep vein thrombosis	30	4	0.45	0.83	13.3	9.5
unplanned intubation	24	6	0.36	0.62	25.0	28.9
pulmonary embolism	22	2	0.33	0.35	9.1	13.5
extremity compartment syndrome	17	0	0.26	0.31	0.0	4.8
new stroke or cerebral vascular accident	17	6	0.26	0.14	35.3	18.6
new myocardial infarction	11	3	0.17	0.24	27.3	33.3
superficial surgical site infection	11	1	0.17	0.19	9.1	2.3
deep surgical site infection	5	0	0.08	0.13	0.0	7.8
catheter related blood stream infection	3	0	0.05	0.10	0.0	14.3
organ or space surgical site infection	2	0	0.03	0.11	0.0	4.0
unplanned return to ICU	1	0	0.02	0.13	0.0	12.8
failure of graft, flap, or prosthesis	0	0	0.00	0.03	0.0	0.0
new bone infection	0	0	0.00	0.03	0.0	0.0

### Quartile Plot of Time In Emergency Department by Injury Severity Score

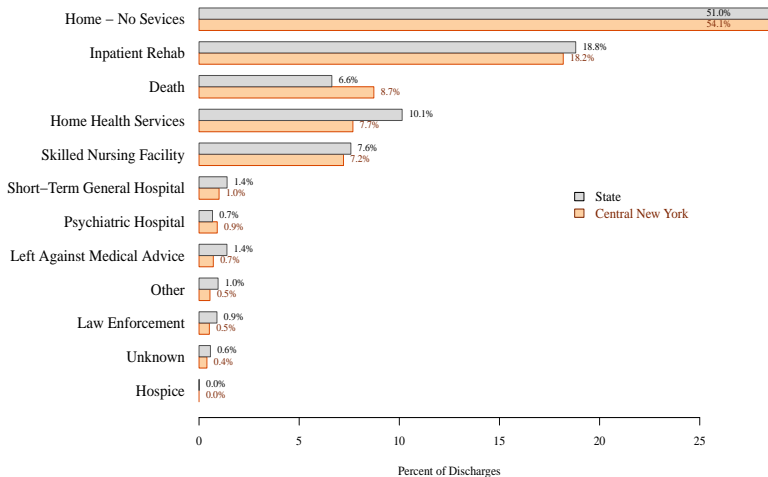


### Quartile Plot of Time Until First Procedure by Injury Severity Score



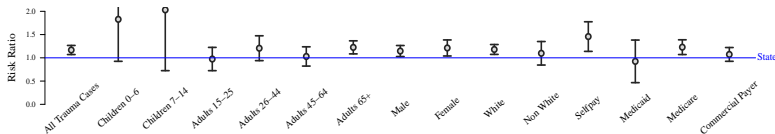
The quartile plot highlights the middle 50% of patients with the box. The center line denotes the median (the 50<sup>th</sup> percentile), 25% of patients therefore fall below the range of the box, and 25% fall above the range of the box.

### Discharge Destination

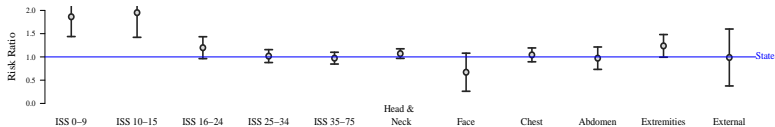


Note that axis margin cuts off full length of discharged to home bar.

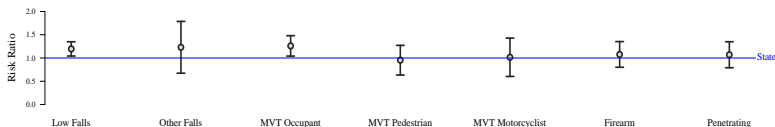
### Risk by Patient Characteristics



### Risk by Severity and Location of Injury



### Risk by Type of Trauma



$$\text{Risk Ratio} = \frac{\text{observed fatality rate}}{\text{expected fatality rate}}$$

Expected rate is estimated using a multivariate logistic regression adjusting for risk factors: age, gender, injury severity, injury body region, injury type, Glasgow coma motor score, systolic blood pressure, mechanism of trauma, prehospital care, and existing comorbidities.

## Central New York Regional Risk Adjusted Fatality Rates

Categories	Central New York Region (CNY)			Comparison*		
	N	Observed	Expected	Risk Ratio	State	CNY
<b>Overall</b>						
All Trauma Cases	5,958	8.4%	7.2%	1.2 ±0.1	6.6%	7.7%
<b>Age</b>						
Children 0-6	299	5.0%	2.7%	1.8 ±0.9	2.3%	4.2%
Children 7-14	270	3.3%	1.6%	2.0 ±1.3	2.1%	4.3%
Adults 15-25	977	5.6%	5.8%	1.0 ±0.3	4.7%	4.6%
Adults 26-44	1,064	6.9%	5.7%	1.2 ±0.3	4.6%	5.6%
Adults 45-64	1,402	6.3%	6.2%	1.0 ±0.2	5.5%	5.6%
Adults 65+	1,828	13.8%	11.3%	1.2 ±0.1	10.6%	13.0%
<b>Gender</b>						
Male	3,822	8.6%	7.5%	1.1 ±0.1	6.8%	7.8%
Female	2,136	8.1%	6.7%	1.2 ±0.2	6.2%	7.5%
<b>Race</b>						
White	5,230	8.3%	7.1%	1.2 ±0.1	6.9%	8.1%
Non White	728	9.1%	8.3%	1.1 ±0.3	5.9%	6.5%
<b>Primary Payor</b>						
Selfpay	479	14.4%	9.9%	1.5 ±0.3	10.0%	14.6%
Medicaid	343	4.4%	4.7%	0.9 ±0.5	4.0%	3.7%
Medicare	1,630	12.4%	10.1%	1.2 ±0.2	9.8%	12.1%
Commercial Payer	2,816	6.7%	6.2%	1.1 ±0.1	5.2%	5.6%

State comparison is risk adjusted. N values reflect data available for accurate risk adjustment (not regional totals). Risk ratio quotes a 95% confidence interval.



## Central New York Regional Risk Adjusted Fatality Rates

Categories	Central New York Region (CNY)				Comparison*	
	N	Observed	Expected	Risk Ratio	State	CNY
<b>Injury Severity Score (ISS)</b>						
ISS 0-9	2,000	3.5%	1.9%	1.9 ±0.4	1.8%	3.3%
ISS 10-15	1,302	3.8%	2.0%	2.0 ±0.5	1.8%	3.6%
ISS 16-24	1,631	5.8%	4.8%	1.2 ±0.2	4.3%	5.2%
ISS 25-34	747	21.7%	21.3%	1.0 ±0.1	25.2%	25.7%
ISS 35-75	278	45.0%	46.2%	1.0 ±0.1	44.6%	43.4%
<b>Location of Injury</b>						
Head & Neck	2,895	12.6%	11.7%	1.1 ±0.1	10.5%	11.3%
Face	64	14.1%	21.0%	0.7 ±0.4	15.0%	10.1%
Chest	1,789	9.6%	9.2%	1.0 ±0.1	8.6%	9.0%
Abdomen	511	11.0%	11.3%	1.0 ±0.2	10.5%	10.2%
Extremities	1,263	7.3%	5.9%	1.2 ±0.2	5.7%	7.0%
External	9	55.6%	56.3%	1.0 ±0.6	33.6%	33.2%
<b>Falls</b>						
Low Falls	2,084	10.1%	8.5%	1.2 ±0.2	8.0%	9.5%
Other Falls	425	4.2%	3.4%	1.2 ±0.6	3.8%	4.7%
<b>Motor Vehical Traffic (MVT)</b>						
MVT Occupant	1,342	8.6%	6.9%	1.3 ±0.2	5.7%	7.2%
MVT Pedestrian	232	12.9%	13.6%	1.0 ±0.3	9.9%	9.4%
MVT Motorcyclist	371	5.9%	5.8%	1.0 ±0.4	5.2%	5.3%
<b>Other</b>						
Firearm	192	23.4%	21.8%	1.1 ±0.3	12.8%	13.8%
Penetrating	247	18.6%	17.4%	1.1 ±0.3	9.1%	9.7%

State comparison is risk adjusted. N values reflect data available for accurate risk adjustment (not regional totals). Risk ratio quotes a 95% confidence interval.





## Characteristics of Injury Incidence

### Deaths, Hospitalizations, and Emergency Department<sup>†</sup> (ED) Visits

#### Central Region Residents, 2010-2012

		Deaths		Hospitalizations		ED Visits	
		Mean Annual Frequency	Rate per 100,000 Residents	Mean Annual Frequency	Rate per 100,000 Residents	Mean Annual Frequency	Rate per 100,000 Residents
Total		882	50.8	13,916	801.3	134,553	7,747.7
Age Group	0<1	9	46.2	82	439	1,215	6,476.7
	1-4	10	12.2	187	236.5	9,247	11,697.5
	5-9	4	3.7**	123	123.7	7,665	7,709.5
	10-14	5	5**	184	174.1	10,433	9,870.3
	15-19	36	26.2	557	408.5	14,006	10,277.2
	20-24	65	43.5	737	496	14,798	9,962.6
	25-44	205	49.5	2,184	528.2	35,936	8,690.1
	45-64	241	50.4	3,131	653.4	25,646	5,352.4
	65+	307	119.9	6,731	2,626.5	15,607	6,090.3
	Gender	Male	581	67.7	6,414	753.2	70,249
Female		300	34.2	7,501	859.3	64,301	7,319
Unknown		0	n/a	n/a	n/a	4	n/a
Percent Traumatic Brain Injury		28%		11%		8%	
Mean Charge per Hospitalization or ED Visit		n/a		\$25,525		\$1,278	
Mean One Year Total Hospitalization or ED Visit Charges		n/a		\$355,201,743		\$171,926,512	
Three Year Total Hospitalization or ED Visit Charges		n/a		\$1,065,605,230		\$515,779,536	
Average Length of Hospital Stay (Days)		n/a		6		n/a	

<sup>†</sup>The incidence of ED visits does not include patients who were subsequently admitted into the hospital  
 Rate = Frequency / Population \* 100,000

\*\*Data based on frequencies less than six not reported

\*\*Caution: Rates calculated using frequencies of less than 20 are unstable

Source: NYSDOH, Bureau of Occupational Health and Injury Prevention  
[www.health.ny.gov/prevention/injury\\_prevention/](http://www.health.ny.gov/prevention/injury_prevention/)

SPARCS December 2013

Vital Statistics Death File February 2014



Emergency Department (ED)† Visits Due to Injury  
Leading Causes by Age Group  
Central Trauma Region, New York State Residents, 2010-2012

Rank	Age Group									
	0<1	1-4	5-9	10-14	15-19	20-24	25-44	45-64	65+	Total
1	Fall 573 (47%)	Fall 3,530 (38%)	Fall 2,413 (31%)	Struck By, Against 2,707 (26%)	Struck By, Against 3,034 (22%)	Fall 2,350 (16%)	Fall 6,564 (18%)	Fall 7,344 (29%)	Fall 8,625 (55%)	Fall 36,279 (27%)
2	Struck By, Against 133 (11%)	Struck By, Against 1,418 (15%)	Struck By, Against 1,561 (20%)	Fall 2,565 (25%)	Fall 2,314 (17%)	Struck By, Against 1,934 (13%)	Overexertion 4,744 (13%)	Overexertion 2,623 (10%)	Unspecified 1,267 (8%)	Struck By, Against 17,947 (13%)
3	Unspecified 89 (7%)	Environmental 901 (10%)	Environmental 739 (10%)	Overexertion 998 (10%)	Overexertion 1,497 (11%)	Overexertion 1,620 (11%)	Struck By, Against 4,074 (11%)	Unspecified 2,324 (9%)	Struck By, Against 833 (5%)	Overexertion 12,769 (9%)
4	Natural / Environmental 63 (5%)	Unspecified 480 (5%)	Cut / Pierce 542 (7%)	Cut / Pierce 634 (6%)	MVT <sup>a</sup> , Occupant 993 (7%)	Cut / Pierce 1,345 (9%)	Unspecified 3,615 (10%)	Struck By, Against 2,252 (9%)	Overexertion 678 (4%)	Unspecified 10,763 (8%)
5	Poisoning 42 (3%)	Cut / Pierce 416 (4%)	Unspecified 343 (4%)	Unspecified 531 (5%)	Cut / Pierce 937 (7%)	MVT <sup>a</sup> , Occupant 1,233 (8%)	Cut / Pierce 3,213 (9%)	Cut / Pierce 2,202 (9%)	Cut / Pierce 645 (4%)	Cut / Pierce 9,963 (7%)
6	Hot Object / Scald 38 (3%)	Poisoning 325 (4%)	Overexertion 290 (4%)	Environmental 477 (5%)	Unspecified 895 (6%)	Unspecified 1,219 (8%)	MVT <sup>a</sup> , Occupant 2,405 (7%)	MVT <sup>a</sup> , Occupant 1,585 (6%)	Environmental 580 (4%)	MVT <sup>a</sup> , Occupant 7,376 (5%)
7	Cut / Pierce 29 (2%)	Overexertion 299 (3%)	Pedal Cyclist, Non- Traffic 281 (4%)	Pedal Cyclist, Non- Traffic 402 (4%)	Assault 838 (6%)	Assault 1,136 (8%)	Assault 2,045 (6%)	Environmental 1,403 (5%)	MVT <sup>a</sup> , Occupant 572 (4%)	Environmental 6,762 (5%)
8	MVT <sup>a</sup> , Occupant 25 (2%)	Hot Object / Scald 188 (2%)	MVT <sup>a</sup> , Occupant 190 (2%)	Assault 280 (3%)	Natural / Environmental 442 (3%)	Natural / Environmental 560 (4%)	Environmental 1,596 (4%)	Assault 687 (3%)	Poisoning 159 (1%)	Assault 5,167 (4%)
9	Overexertion 19 (2%)	MVT <sup>a</sup> , Occupant 133 (1%)	Transport, Non- Traffic 91 (1%)	MVT <sup>a</sup> , Occupant 237 (2%)	Self-inflicted 357 (3%)	Self-inflicted 271 (2%)	Self-inflicted 487 (1%)	Machinery 291 (1%)	Machinery 104 (1%)	Poisoning 1,713 (1%)
10	Suffocation 12 (1%)	Pedal Cyclist, Non- Traffic 73 (1%)	Poisoning 73 (1%)	Transport, Non- Traffic 202 (2%)	Transport, Non- Traffic 273 (2%)	Transport, Non- Traffic 198 (1%)	Transport, Non- Traffic 481 (1%)	Poisoning 291 (1%)	Transport, Non- Traffic 76 (0%)	Transport, Non- Traffic 1,620 (1%)

Yearly Average (percent of age group)

†The incidence of ED visits does not include those that were subsequently admitted into the hospital

MVT<sup>a</sup> = Motor Vehicle Traffic

<sup>a</sup>Data based on three year total frequencies of less than six are not reportable

	Intentional Injury
	Unintentional Injury



Hospitalizations Due to Injury  
Leading Causes by Age Group  
Central Trauma Region, New York State Residents, 2010-2012

Rank	Age Group									
	0<1	1-4	5-9	10-14	15-19	20-24	25-44	45-64	65+	Total
1	Fall 22 (27%)	Fall 55 (29%)	Fall 50 (41%)	Fall 41 (22%)	Self-Inflicted 189 (34%)	Self-Inflicted 229 (31%)	Self-Inflicted 646 (30%)	Fall 1,155 (37%)	Fall 4,685 (70%)	Fall 6,425 (46%)
2	Assault 16 (19%)	Poisoning 38 (20%)	Struck By, Against 8 (7%)	Self-Inflicted 28 (15%)	MVT <sup>a</sup> , Occupant 73 (13%)	MVT <sup>a</sup> , Occupant 94 (13%)	Fall 315 (14%)	Self-Inflicted 373 (12%)	Unspecified 408 (6%)	Self-Inflicted 1,520 (11%)
3	Suffocation 9 (11%)	Natural / Environmental 15 (8%)	Transport, Non-Traffic 8 (7%)	Transport, Non-Traffic 20 (11%)	Fall 44 (8%)	Poisoning 66 (9%)	Poisoning 222 (10%)	Poisoning 279 (9%)	Poisoning 213 (3%)	Poisoning 868 (6%)
4	Unspecified 7 (9%)	Assault 13 (7%)	Pedal Cyclist, Non-Traffic 8 (7%)	Struck By, Against 18 (10%)	Assault 43 (8%)	Assault 65 (9%)	MVT <sup>a</sup> , Occupant 152 (7%)	Unspecified 178 (6%)	MVT <sup>a</sup> , Occupant 153 (2%)	Unspecified 709 (5%)
5	Poisoning 6 (7%)	Hot Object / Scald 12 (6%)	Cut / Pierce 6 (5%)	Pedal Cyclist, Non-Traffic 13 (7%)	Poisoning 37 (7%)	Fall 59 (8%)	Assault 144 (7%)	MVT <sup>a</sup> , Occupant 166 (5%)	Struck By, Against 99 (1%)	MVT <sup>a</sup> , Occupant 657 (5%)
6	Natural / Environmental 5 (6%)	Struck By, Against 7 (4%)	Natural / Environmental 6 (5%)	MVT <sup>a</sup> , Occupant 8 (4%)	Struck By, Against 29 (5%)	Transport, Non-Traffic 27 (4%)	Unspecified 78 (4%)	Natural / Environmental 110 (4%)	Natural / Environmental 95 (1%)	Assault 370 (3%)
7	Hot Object / Scald 2 (3%)	Unspecified 5 (2%)	MVT <sup>a</sup> , Occupant 8 (7%)	Assault 7 (4%)	Transport, Non-Traffic 27 (5%)	Struck By, Against 22 (3%)	Transport, Non-Traffic 68 (3%)	MVT <sup>a</sup> , Motorcyclist 71 (2%)	Suffocation 76 (1%)	Struck By, Against 309 (2%)
8	Struck By, Against 2 (2%)	MVT <sup>a</sup> , Occupant 4 (2%)	MVT <sup>a</sup> , Pedestrian 4 (4%)	MVT <sup>a</sup> , Pedestrian 7 (4%)	Pedal Cyclist, Non-Traffic 9 (2%)	Cut / Pierce 18 (2%)	Environmental 59 (3%)	Struck By, Against 68 (2%)	Overexertion 67 (1%)	Transport, Non-Traffic 256 (2%)
9	*	Fire / Flame 3 (2%)	Unspecified 4 (3%)	Environmental 6 (3%)	Overexertion 9 (2%)	MVT <sup>a</sup> , Motorcyclist 18 (2%)	Struck By, Against 56 (3%)	Transport, Non-Traffic 67 (2%)	Self-Inflicted 56 (1%)	Overexertion 172 (1%)
10	*	Suffocation 3 (2%)	Poisoning 4 (3%)	MVT <sup>a</sup> , Pedal Cyclist 6 (3%)	Unspecified 9 (2%)	Unspecified 18 (2%)	MVT <sup>a</sup> , Motorcyclist 52 (2%)	Assault 67 (2%)	Transport, Non-Traffic 38 (1%)	MVT <sup>a</sup> , Motorcyclist 157 (1%)

Yearly Average (percent of age group)

MVT<sup>a</sup> = Motor Vehicle Traffic

\*Data based on three year total frequencies of less than six are not reportable

	Intentional Injury
	Unintentional Injury



Injury Related Deaths  
Leading Causes by Age Group  
Central Trauma Region, New York State Residents, 2010-2012

Rank	Age Group									
	0<1	1-4	5-9	10-14	15-19	20-24	25-44	45-64	65+	Total
1	Suffocation 5 (58%)	Homicide 3 (28%)	*	MVT <sup>a</sup> , Unspecified 2 (38%)	Suicide 11 (30%)	Suicide 16 (25%)	Suicide 64 (31%)	Suicide 74 (31%)	Fall 134 (44%)	Suicide 200 (23%)
2	*	*	*	*	MVT <sup>a</sup> , Occupant 7 (19%)	MVT <sup>a</sup> , Occupant 11 (17%)	Poisoning 49 (24%)	Poisoning 49 (20%)	Unspecified 35 (11%)	Fall 158 (18%)
3	*	*	*	*	Homicide 5 (15%)	Homicide 10 (15%)	MVT <sup>a</sup> , Occupant 18 (9%)	Fall 18 (7%)	Suicide 34 (11%)	Poisoning 117 (13%)
4	*	*	*	*	MVT <sup>a</sup> , Unspecified 3 (8%)	Poisoning 9 (13%)	Homicide 12 (6%)	MVT <sup>a</sup> , Occupant 14 (6%)	Suffocation 28 (9%)	MVT <sup>a</sup> , Occupant 71 (8%)
5		*	*	*	*	MVT <sup>a</sup> , Unspecified 8 (12%)	MVT <sup>a</sup> , Motorcyclist 10 (5%)	MVT <sup>a</sup> , Unspecified 12 (5%)	MVT <sup>a</sup> , Occupant 22 (7%)	Suffocation 51 (6%)
6		*	*	*	*	*	MVT <sup>a</sup> , Unspecified 9 (5%)	Suffocation 10 (4%)	MVT <sup>a</sup> , Unspecified 10 (3%)	Unspecified 48 (5%)
7		*	*	*	*	*	Fall 5 (2%)	MVT <sup>a</sup> , Motorcyclist 9 (4%)	Poisoning 8 (2%)	MVT <sup>a</sup> , Unspecified 45 (5%)
8					*	*	Suffocation 4 (2%)	Unspecified 8 (3%)	MVT <sup>a</sup> , Pedestrian 7 (2%)	Homicide 42 (5%)
9					*	*	MVT <sup>a</sup> , Pedestrian 4 (2%)	Homicide 7 (3%)	Fire / Flame 6 (2%)	MVT <sup>a</sup> , Motorcyclist 23 (3%)
10					*	*	Fire / Flame 4 (2%)	MVT <sup>a</sup> , Pedestrian 5 (2%)	Natural / Environmental 4 (1%)	MVT <sup>a</sup> , Pedestrian 21 (2%)

Yearly Average (percent of age group)

MVT<sup>a</sup> = Motor Vehicle Traffic

\*Data based on three year total frequencies of less than six are not reportable

Intentional Injury
Unintentional Injury

