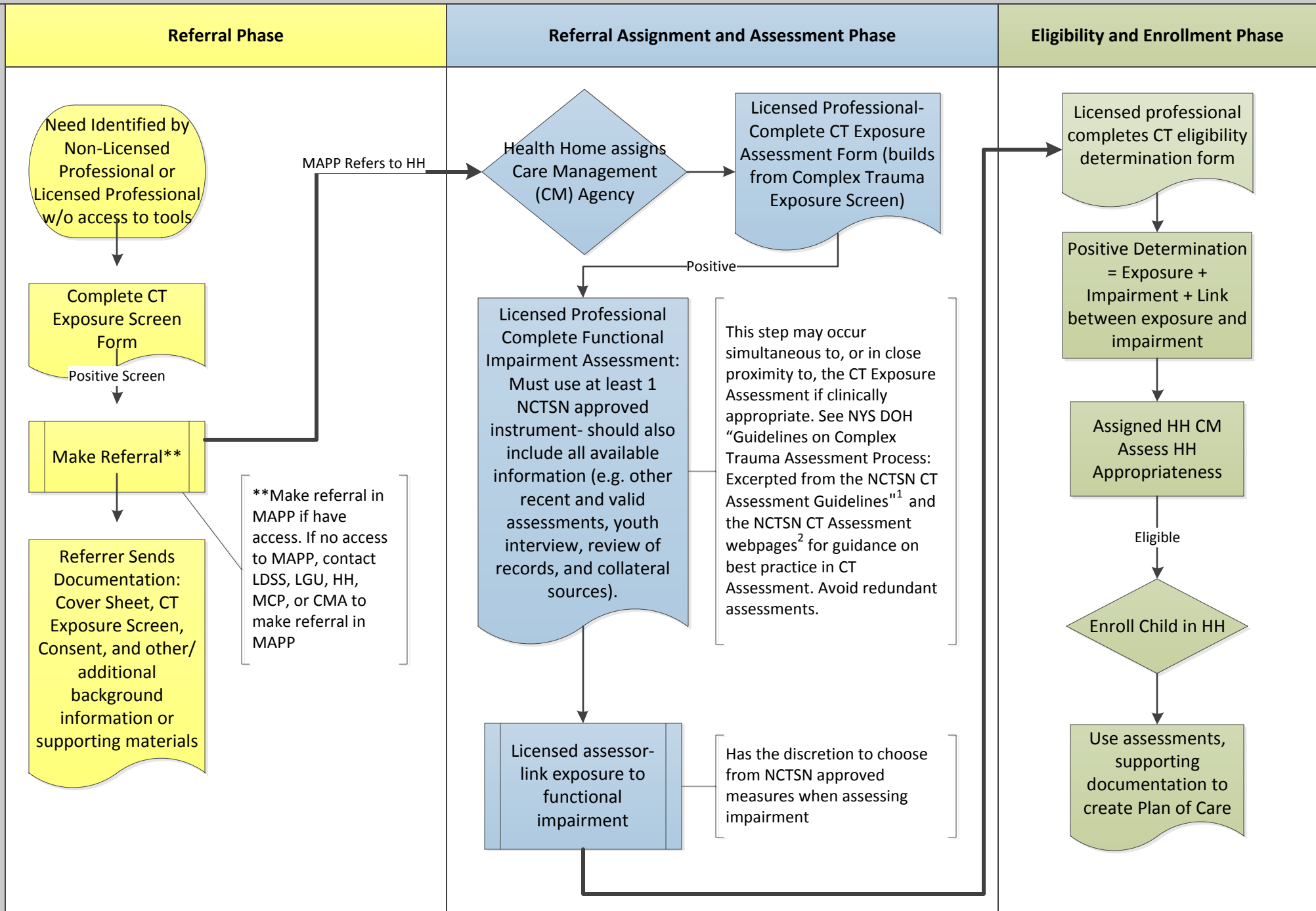


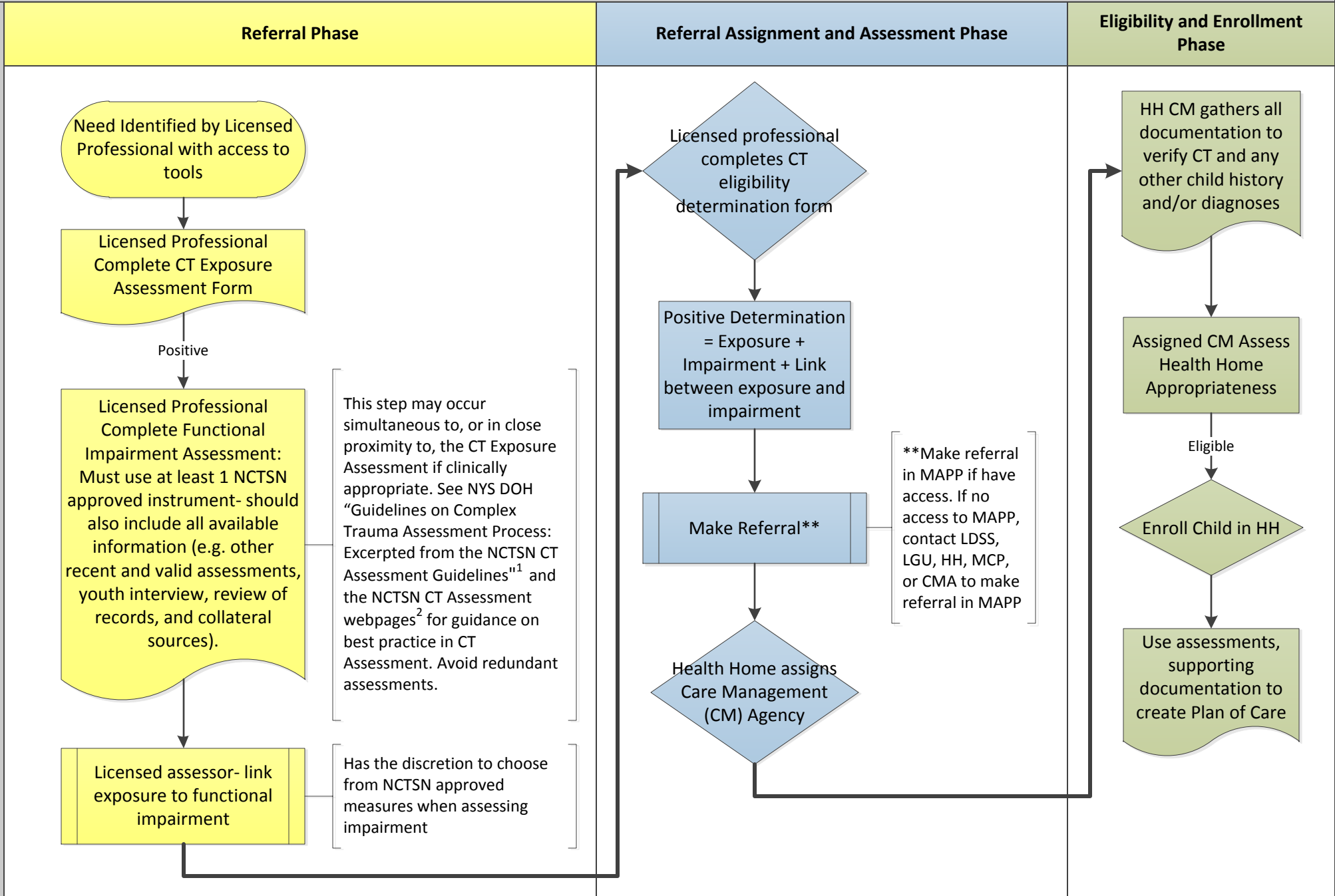
## SCENARIO #1: Complex Trauma (CT) Health Home Referral Workflow



<sup>1</sup>[https://www.health.ny.gov/health\\_care/medicaid/program/medicaid\\_health\\_homes/docs/final\\_guidelines\\_on\\_complex\\_trauma\\_assessment\\_process.pdf](https://www.health.ny.gov/health_care/medicaid/program/medicaid_health_homes/docs/final_guidelines_on_complex_trauma_assessment_process.pdf)

<sup>2</sup><http://www.nctsn.org/trauma-types/complex-trauma/assessment>

SCENARIO #2: Complex Trauma (CT) Health Home Referral Workflow



<sup>1</sup>[https://www.health.ny.gov/health\\_care/medicaid/program/medicaid\\_health\\_homes/docs/final\\_guidelines\\_on\\_complex\\_trauma\\_assessment\\_process.pdf](https://www.health.ny.gov/health_care/medicaid/program/medicaid_health_homes/docs/final_guidelines_on_complex_trauma_assessment_process.pdf)

<sup>2</sup><http://www.nctsn.org/trauma-types/complex-trauma/assessment>